

<b>Document Title</b>	Specification of PWM Driver
<b>Document Owner</b>	AUTOSAR
<b>Document Responsibility</b>	AUTOSAR
<b>Document Identification No</b>	037
<b>Document Classification</b>	Standard

<b>Document Version</b>	2.5.0
<b>Document Status</b>	Final
<b>Part of Release</b>	4.0
<b>Revision</b>	3

<b>Document Change History</b>			
<b>Date</b>	<b>Version</b>	<b>Changed by</b>	<b>Change Description</b>
04.10.2011	2.5.0	AUTOSAR Administration	<ul style="list-style-type: none"> <li>• Re-formulated PWM045</li> </ul>
29.10.2010	2.4.0	AUTOSAR Administration	<ul style="list-style-type: none"> <li>• New Error symbol: PWM_E_PARAM_POINTER, shall be reported if API Pwm_GetVersionInfo service is called with a NULL parameter</li> <li>• Updated the chapter Version Check</li> <li>• Maintenance in phrasing and explaining</li> </ul>
07.12.2009	2.3.0	AUTOSAR Administration	<ul style="list-style-type: none"> <li>• The behavior of the function Pwm_SetPeriodAndDuty is explained in case of an input value of zero period.</li> <li>• Added the chapter Debug Support</li> <li>• Splitted some requirements so each ID is unique.</li> <li>• Legal disclaimer revised</li> </ul>
23.06.2008	2.2.1	AUTOSAR Administration	<ul style="list-style-type: none"> <li>• Legal disclaimer revised</li> </ul>
20.12.2007	2.2.0	AUTOSAR Administration	<ul style="list-style-type: none"> <li>• Tables generated from UML-models and UML-diagrams linked to UML-model</li> <li>• General improvements of requirements in preparation of CT-development</li> <li>• Reactivation concept for IDLE PWM channels adapted</li> <li>• Development error in case of already initialized module added</li> <li>• Document meta information extended</li> <li>• Small layout adaptations made</li> </ul>

<b>Document Change History</b>			
<b>Date</b>	<b>Version</b>	<b>Changed by</b>	<b>Change Description</b>
30.01.2007	2.1.0	AUTOSAR Administration	<ul style="list-style-type: none"> <li>• Updated file include structure</li> <li>• Added configuration macros ON/OFF for PWM APIs</li> <li>• Renamed configuration parameter PWM_PERIOD_UPDATED_ENDPERIOD to PwmPeriodUpdatedEndperiod</li> <li>• Updated PWM signal description figure</li> <li>• Legal disclaimer revised</li> <li>• “Advice for users” revised</li> <li>• “Revision Information” added</li> </ul>
25.04.2006	2.0.0	AUTOSAR Administration	<p>Document structure adapted to common Release 2.0 SWS Template.</p> <ul style="list-style-type: none"> <li>• Modify abstraction level of PWM channel</li> <li>• Notifications are configurable</li> <li>• Update the configuration of the module</li> </ul>
23.06.2005	1.0.0	AUTOSAR Administration	Initial Release

## Disclaimer

This specification and the material contained in it, as released by AUTOSAR is for the purpose of information only. AUTOSAR and the companies that have contributed to it shall not be liable for any use of the specification.

The material contained in this specification is protected by copyright and other types of Intellectual Property Rights. The commercial exploitation of the material contained in this specification requires a license to such Intellectual Property Rights.

This specification may be utilized or reproduced without any modification, in any form or by any means, for informational purposes only.

For any other purpose, no part of the specification may be utilized or reproduced, in any form or by any means, without permission in writing from the publisher.

The AUTOSAR specifications have been developed for automotive applications only. They have neither been developed, nor tested for non-automotive applications.

The word AUTOSAR and the AUTOSAR logo are registered trademarks.

## Advice for users

AUTOSAR Specification Documents may contain exemplary items (exemplary reference models, "use cases", and/or references to exemplary technical solutions, devices, processes or software).

Any such exemplary items are contained in the Specification Documents for illustration purposes only, and they themselves are not part of the AUTOSAR Standard. Neither their presence in such Specification Documents, nor any later documentation of AUTOSAR conformance of products actually implementing such exemplary items, imply that intellectual property rights covering such exemplary items are licensed under the same rules as applicable to the AUTOSAR Standard.

## Table of Contents

1	Introduction and functional overview .....	6
2	Acronyms and abbreviations .....	7
3	Related documentation.....	8
3.1	Input documents.....	8
4	Constraints and assumptions .....	9
4.1	Limitations .....	9
4.2	Applicability to car domains.....	9
5	Dependencies to other modules.....	10
5.1	File structure .....	10
5.1.1	Code file structure .....	10
5.1.2	Header file structure.....	10
6	Requirements traceability .....	12
7	Functional specification .....	23
7.1	General behavior.....	23
7.2	Time Unit Ticks.....	23
7.2.1	Background & Rationale .....	23
7.2.2	Requirements.....	23
7.3	Error classification .....	23
7.4	Error Detection .....	24
7.5	Error Notification.....	25
7.6	Duty Cycle Resolution and scaling .....	25
7.7	Version check.....	25
7.8	Debug Support .....	26
8	API specification.....	27
8.1	Imported types.....	27
8.2	Type definitions .....	27
8.2.1	Pwm_ChannelType.....	27
8.2.2	Pwm_PeriodType.....	27
8.2.3	Pwm_OutputStateType .....	27
8.2.4	Pwm_EdgeNotificationType .....	28
8.2.5	Pwm_ChannelClassType .....	28
8.2.6	Pwm_ConfigType.....	28
8.3	Function definitions .....	29
8.3.1	Pwm_Init .....	29
8.3.2	Pwm_DeInit.....	30
8.3.3	Pwm_SetDutyCycle .....	31
8.3.4	Pwm_SetPeriodAndDuty.....	32
8.3.5	Pwm_SetOutputTogle .....	33
8.3.6	Pwm_GetOutputState .....	34
8.3.7	Pwm_DisableNotification .....	35
8.3.8	Pwm_EnableNotification .....	36

8.3.9	Pwm_GetVersionInfo .....	37
8.4	Callback notifications.....	38
8.5	Scheduled functions .....	38
8.6	Expected Interfaces.....	38
8.6.1	Mandatory Interfaces .....	38
8.6.2	Optional Interfaces .....	38
8.6.3	Configurable interfaces .....	39
8.7	API parameter checking .....	39
9	Sequence diagrams .....	41
9.1	Initialization .....	41
9.2	De-initialization .....	42
9.3	Setting the duty cycle .....	43
9.4	Setting the period and the duty .....	44
9.5	Setting the PWM output to idle .....	45
9.6	Getting the PWM Output state .....	46
9.7	Using the PWM notifications .....	47
10	Configuration specification.....	48
10.1	How to read this chapter .....	48
10.1.1	Configuration and configuration parameters .....	48
10.1.2	Containers.....	48
10.1.3	Specification template for configuration parameters .....	49
10.2	Containers and configuration parameters .....	49
10.2.1	Variants.....	49
10.2.2	Pwm .....	50
10.2.3	PwmGeneral .....	50
10.2.4	PwmChannel.....	51
10.2.5	PwmChannelConfigSet .....	53
10.2.6	PwmConfigurationOfOptApiServices .....	54
10.3	Published Information.....	56
11	Changes .....	57
11.1	Deleted SWS Items .....	57
11.2	Replaced SWS Items .....	57
11.3	Changed SWS Items.....	57
11.4	Added SWS Items .....	58
12	Changes during SWS Improvements by Technical Office .....	59
12.1	Deleted SWS Items .....	59
12.2	Replaced SWS Items .....	59
12.3	Changed SWS Items.....	59
12.4	Added SWS Items .....	59
13	Not applicable requirements .....	61

# 1 Introduction and functional overview

This specification specifies the functionality, API and the configuration of the AUTOSAR Basic Software module PWM driver.

Each PWM channel is linked to a hardware PWM which belongs to the microcontroller. The type of the PWM signal (for example center Align, left Align, Etc..) is not defined within this specification and is left up to the implementation.

The driver provides functions for initialization and control of the microcontroller internal PWM stage (pulse width modulation). The PWM module generates pulses with variable pulse width. It allows the selection of the duty cycle and the signal period time.

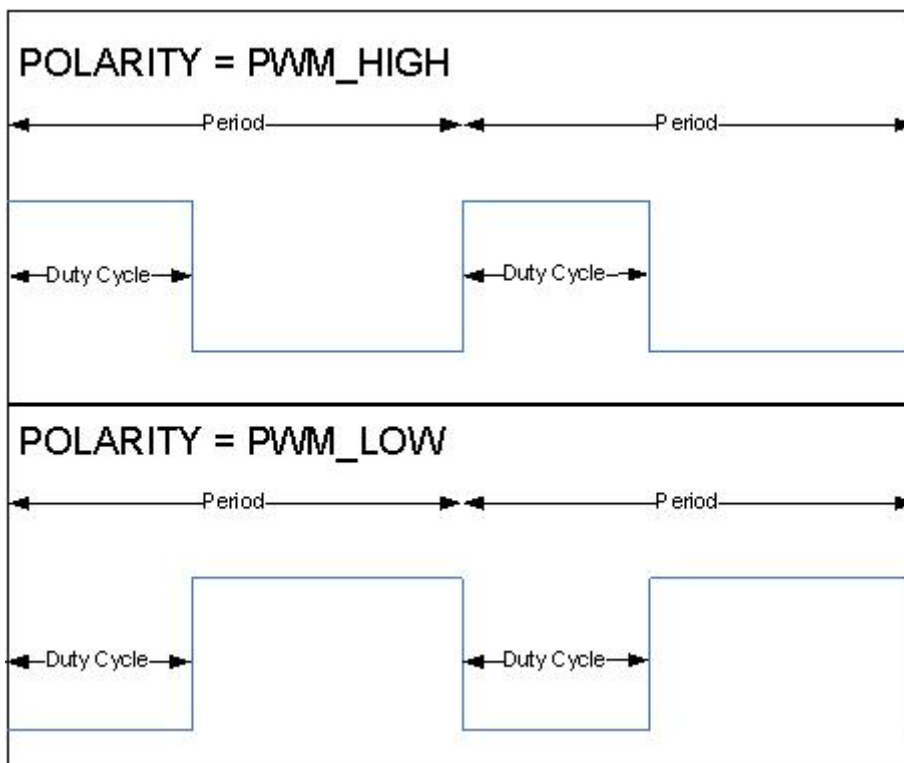


Figure 1: PWM signal description

## 2 Acronyms and abbreviations

Acronyms and abbreviations that have a local scope are not contained in the AUTOSAR glossary. These must appear in a local glossary.

<b>Acronym:</b>	<b>Description:</b>
PWM Channel	Numeric identifier linked to a hardware PWM.
PWM Output State	Defines the output state for a PWM signal. It could be: <ul style="list-style-type: none"> <li>▪ High.</li> <li>▪ Low.</li> </ul>
PWM Idle State	The idle state represents the output state of the PWM channel after the call of Pwm_SetOutputToIdle or Pwm_DeInit
PWM Polarity	Defines the starting output state of each PWM channel
PWM Duty cycle	Defines a percentage of the starting level (could be high or low) related to the period.
PWM period	Defines the period of the PWM signal.

<b>Abbreviation:</b>	<b>Description:</b>
PWM	Pulse Width Modulation.
DEM	Diagnostic Event Manager.
DET	Development Error Tracer.
MCU	Microcontroller Unit.
PLL	Phase Locked Loop.
ISR	Interrupt Service Routine.

### 3 Related documentation

#### 3.1 Input documents

- [1] Layered Software Architecture  
AUTOSAR\_EXP\_LayeredSoftwareArchitecture.pdf
- [2] General Requirements on SPAL  
AUTOSAR\_SRS\_SPALGeneral.pdf
- [3] General Requirements on Basic Software Modules  
AUTOSAR\_SRS\_BSWGeneral.pdf
- [4] Specification of Development Error Tracer  
AUTOSAR\_SWS\_DevelopmentErrorTracer.pdf
- [5] Specification of MCU Driver  
AUTOSAR\_SWS\_MCUDriver.pdf
- [6] Specification of ECU Configuration,  
AUTOSAR\_TPS\_ECUConfiguration.pdf
- [7] Basic Software Module Description Template,  
AUTOSAR\_TPS\_BSWModuleDescriptionTemplate.pdf
- [8] List of Basic Software Modules  
AUTOSAR\_TR\_BSWModuleList



## 4 Constraints and assumptions

### 4.1 Limitations

**[PWM001]**[The Pwm SWS does not cover PWM emulation on general purpose I/O.]  
(BSW12386)

### 4.2 Applicability to car domains

No restrictions.

## 5 Dependencies to other modules

The PWM depends on the system clock. Thus, changes of the system clock (e.g. PLL on → PLL off) also affect the clock settings of the PWM hardware.

The PWM Driver depends on the following modules:

- PORT Driver: To set the port pin functionality. **PWM141**
- MCU Driver: To set prescaler, system clock and PLL. **PWM142**
- DET: Development Error Tracer in Development mode. **PWM143**

The document 087\_AUTOSAR\_ECU\_Configuration contains a chapter 4.6 - *Clock Tree Configuration*, which details the mechanism to deliver reference clock signals to peripherals.

### 5.1 File structure

#### 5.1.1 Code file structure

**[PWM065]** [The Pwm SWS shall not define the code file structure.] (BSW00380, BSW00346, BSW158, BSW00314, BSW00370)

#### 5.1.2 Header file structure

**[PWM075a]** [Pwm.h shall include Pwm\_Cfg.h.] ()

**[PWM075b]** [Pwm.h shall include Std\_Types.h.] ()

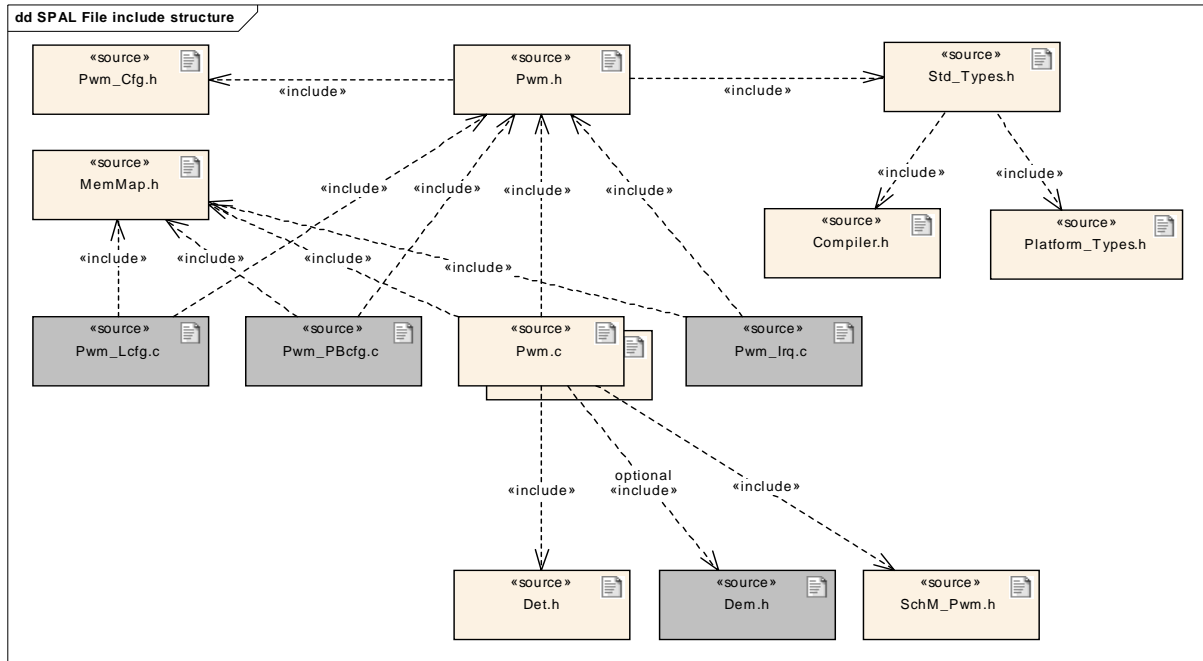
**[PWM075c]** [Std\_Types.h shall include Compiler.h and Platform\_Types.h.] ()

**[PWM075d]** [Pwm\_Lcfg.c shall include Pwm.h and Memmap.h.] ()

**[PWM075e]** [Pwm.c shall include Pwm.h, MemMap.h, Det.h and SchM\_Pwm.h.] ()

**[PWM075f]** [Pwm\_PBcfg.c shall include MemMap.h and Pwm.h.] ()

**[PWM075g]** [Pwm\_Irq.c shall include MemMap.h and Pwm.h.] ()



**Figure 2: Header file structure**

**[PWM066a]** [The PWM Driver module shall optionally include the Dem.h file if any production error will be issued by the implementation.] ()

**[PWM066b]** [The name of the Event Id symbols are implementation specific.] ()

**[PWM066c]** [The DEM configuration tool assigns ECU dependent values to the Event Id symbols and publishes the symbols in Dem\_IntErrId.h.

By this inclusion the APIs to report errors as well as the required Event Id symbols are included. This specification defines the name of the Event Id symbols which are provided by XML to the DEM configuration tool. The DEM configuration tool assigns ECU dependent values to the Event Id symbols and publishes the symbols in Dem\_IntErrId.h. ] ()

## 6 Requirements traceability

Requirement	Satisfied by
-	PWM097
-	PWM105
-	PWM102
-	PWM145
-	PWM108
-	PWM094
-	PWM098
-	PWM114
-	PWM088
-	PWM121
-	PWM100
-	PWM150
-	PWM076
-	PWM107
-	PWM149
-	PWM093
-	PWM151
-	PWM141
-	PWM104
-	PWM018
-	PWM095
-	PWM110
-	PWM099
-	PWM081
-	PWM147
-	PWM078
-	PWM020
-	PWM109
-	PWM118
-	PWM119
-	PWM148
-	PWM106
-	PWM103
-	PWM116
-	PWM111
-	PWM089
-	PWM014
-	PWM016

-	PWM101
-	PWM096
BSW003	PWM153
BSW00300	PWM153
BSW00301	PWM153
BSW00302	PWM153
BSW00304	PWM153
BSW00305	PWM153
BSW00306	PWM153
BSW00307	PWM153
BSW00308	PWM153
BSW00309	PWM153
BSW00310	PWM153
BSW00312	PWM153
BSW00323	PWM047, PWM046, PWM045, PWM117
BSW00325	PWM153
BSW00326	PWM153
BSW00327	PWM153
BSW00328	PWM153
BSW00329	PWM153
BSW00330	PWM153
BSW00331	PWM153
BSW00333	PWM153
BSW00334	PWM153
BSW00335	PWM153
BSW00336	PWM010
BSW00339	PWM005
BSW00341	PWM153
BSW00342	PWM153
BSW00343	PWM070
BSW00347	PWM153
BSW00348	PWM153
BSW00350	PWM153
BSW00353	PWM153
BSW00355	PWM153
BSW00357	PWM153
BSW00358	PWM153
BSW00359	PWM153
BSW00360	PWM153
BSW00361	PWM153
BSW00371	PWM153
BSW00373	PWM153

BSW00375	PWM153
BSW00376	PWM153
BSW00377	PWM153
BSW00378	PWM153
BSW00383	PWM153
BSW00386	PWM047, PWM046, PWM045, PWM005, PWM117, PWM064
BSW004	PWM029
BSW00401	PWM153
BSW00406	PWM117
BSW00407	PWM068
BSW00408	PWM153
BSW00410	PWM153
BSW00413	PWM153
BSW00414	PWM153
BSW00415	PWM153
BSW00416	PWM153
BSW00417	PWM153
BSW00419	PWM153
BSW00420	PWM005
BSW00421	PWM005
BSW00422	PWM005
BSW00423	PWM153
BSW00424	PWM153
BSW00425	PWM153
BSW00426	PWM153
BSW00427	PWM153
BSW00428	PWM153
BSW00429	PWM153
BSW00431	PWM153
BSW00432	PWM153
BSW00433	PWM153
BSW00434	PWM153
BSW005	PWM153
BSW006	PWM153
BSW007	PWM153
BSW009	PWM153
BSW010	PWM153
BSW101	PWM007
BSW12057	PWM007, PWM052, PWM062
BSW12064	PWM153
BSW12067	PWM153
BSW12068	PWM153

BSW12069	PWM153
BSW12075	PWM153
BSW12077	PWM153
BSW12078	PWM153
BSW12092	PWM153
BSW12125	PWM062
BSW12129	PWM026
BSW12163	PWM011, PWM012, PWM010
BSW12169	PWM153
BSW12265	PWM153
BSW12267	PWM153
BSW12293	PWM061
BSW12295	PWM013
BSW12297	PWM019
BSW12299	PWM023, PWM024
BSW12358	PWM021
BSW12378	PWM023, PWM024, PWM061
BSW12379	PWM153
BSW12381	PWM010
BSW12382	PWM017
BSW12383	PWM058
BSW12385	PWM022
BSW12386	PWM001
BSW12389	PWM041
BSW12459	PWM059
BSW12461	PWM153
BSW12462	PWM153
BSW12463	PWM153
BSW157	PWM025
BSW159	PWM153
BSW160	PWM153
BSW161	PWM153
BSW162	PWM153
BSW164	PWM153
BSW167	PWM153
BSW168	PWM153
BSW170	PWM153
BSW172	PWM153

Document: General Requirements on Basic Software Modules.

<b>Requirement</b>	<b>Satisfied by</b>
[BSW00344] Reference to link-time configuration	<a href="#">PWM027</a>
[BSW00404] Reference to post build time configuration	<a href="#">PWM027</a>
[BSW00405] Reference to multiple configuration sets	<a href="#">PWM027</a>
[BSW00345] Configuration at Compile time	<a href="#">PWM004</a>
[BSW159] Tool-based configuration	Not applicable (Both static and runtime configuration parameters are located outside the source code of the module. This is the prerequisite for automatic configuration.)
[BSW167] Static configuration checking	Not Applicable (requirement on configuration tool)
[BSW171] Configurability of optional functionality	<a href="#">PWM004</a> <a href="#">PWM080a</a> <a href="#">PWM080b</a> <a href="#">PWM082a</a> , <a href="#">PWM082b</a> , <a href="#">PWM083a</a> , <a href="#">PWM083b</a> , <a href="#">PWM084a</a> , <a href="#">PWM084b</a> <a href="#">PWM085a</a> , <a href="#">PWM085b</a>
[BSW170] Data for reconfiguration of AUTOSAR SW-Components	Not applicable (no reconfiguration and not a SWC)
[BSW00380] Separate C-File for configuration parameters	<a href="#">PWM065</a>
[BSW00419] Separate C-Files for pre-compile time configuration parameters	Not applicable (Implementation specific, the code file structure is not defined within this specification and is left up to the implementer)
[BSW00381] Separate configuration header file for pre-compile time parameters	<a href="#">PWM075</a>
[BSW00412] Separate H-File for configuration parameters	<a href="#">PWM075</a>
[BSW00383] List dependencies of configuration files	Not applicable (Requirement to be taken into account during implementation)
[BSW00384] List dependencies to other modules	CHECK WITH OTHER SWS!
[BSW00387] Specify the configuration class of callback function	<a href="#">PWM027</a> parameter PwmNotification
[BSW00388] Introduce containers	<a href="#">PWM004</a> <a href="#">PWM027</a>
[BSW00389] Containers shall have names	<a href="#">PWM004</a> <a href="#">PWM027</a>
[BSW00390] Parameter content shall be unique within the module	<a href="#">PWM004</a> <a href="#">PWM027</a>
[BSW00391] Parameter shall have unique names	<a href="#">PWM004</a> <a href="#">PWM027</a>
[BSW00392] Parameters shall have a type	<a href="#">PWM004</a> <a href="#">PWM027</a>
[BSW00393] Parameters shall have a range	<a href="#">PWM004</a> <a href="#">PWM027</a>
[BSW00394] Specify the scope of the parameters	<a href="#">PWM004</a> <a href="#">PWM027</a>
[BSW00395] List the required parameters (per parameter)	<a href="#">PWM004</a> <a href="#">PWM027</a>
[BSW00396] Configuration classes	<a href="#">PWM004</a> <a href="#">PWM027</a>
[BSW00397] Pre-compile-time parameters	<a href="#">PWM004</a> <a href="#">PWM027</a>
[BSW00398] Link-time parameters	<a href="#">PWM004</a> <a href="#">PWM027</a>
[BSW00399] Loadable Post-build time parameters	<a href="#">PWM004</a> <a href="#">PWM027</a>
[BSW00400] Selectable Post-build time parameters	<a href="#">PWM004</a> <a href="#">PWM027</a>
[BSW00402] Published information	<a href="#">PWM054</a>
[BSW00375] Notification of wake-up reason	Not applicable (No wakeup functionality in this BSW)
[BSW101] Initialization interface	<a href="#">PWM007</a>
[BSW00416] Sequence of Initialization	Not Applicable (SW Integration requirement)
[BSW00406] Check module initialization	<a href="#">PWM117</a>



<b>Requirement</b>	<b>Satisfied by</b>
[BSW168] Diagnostic Interface of SW components	Not applicable (Not a SWC)
[BSW00407] Function to read out published parameters	<a href="#">PWM068</a> , PWM069a, PWM069b
[BSW00423] Usage of SW-C template to describe BSW modules with AUTOSAR Interfaces	Not applicable (Module is part of MCAL)
[BSW00424] BSW main processing function task allocation	Not applicable (No Main function in this module and requirement for software integration)
[BSW00425] Trigger conditions for schedulable objects	Not applicable (Requirement to be taken into account during implementation and integration)
[BSW00426] Exclusive areas in BSW modules	Not applicable (Requirement to be taken into account during implementation and integration)
[BSW00427] ISR description for BSW modules	Not applicable (Requirement to be taken into account during implementation and integration)
[BSW00428] Execution order dependencies of main processing functions	Not applicable (Requirement to be taken into account during implementation and integration)
[BSW00429] Restricted BSW OS functionality access	Not applicable (Requirement to be taken into account during implementation and integration)
[BSW00431] The BSW Scheduler module implements task bodies	Not applicable (Requirement to be taken into account during implementation and integration)
[BSW00432] Modules should have separate main processing functions for read/receive and write/transmit data path	Not applicable (Requirement to be taken into account during implementation and integration)
[BSW00433] Calling of main processing functions	Not applicable (Requirement to be taken into account during implementation and integration)
[BSW00434] The Schedule Module shall provide an API for exclusive areas	Not applicable (Requirement to be taken into account during implementation and integration)
[BSW00435] Module Header File Structure for the Basic Software Scheduler	<a href="#">PWM075</a>
[BSW00436] Module Header File Structure for the Memory Mapping	<a href="#">PWM075</a>
[BSW00336] Shutdown interface	<a href="#">PWM010</a>
[BSW00337] Classification of errors	PWM002a, PWM002b, PWM002c, PWM002d, PWM002e
[BSW00338] Detection and Reporting of development errors	PWM003a, PWM003b
[BSW00369] Do not return development error codes via API	PWM003a, PWM003b
[BSW00339] Reporting of production relevant error status	<a href="#">PWM005</a> <a href="#">PWM006a</a> , PWM006b <a href="#">PWM066</a>
[BSW00421] Reporting of production relevant error events	<a href="#">PWM005</a> <a href="#">PWM006a</a> , PWM006b <a href="#">PWM066</a>
[BSW00422] Debouncing of production relevant error status	<a href="#">PWM005</a> <a href="#">PWM006a</a> , PWM006b

<b>Requirement</b>	<b>Satisfied by</b>
[BSW00420] Production relevant error event rate detection	<a href="#">PWM005</a> <a href="#">PWM006a</a> , PWM006b
[BSW00417] Reporting of Error Events by Non-Basic Software	Not Applicable (Module is a BSW)
[BSW00323] API parameter checking	<a href="#">PWM117</a> <a href="#">PWM045</a> <a href="#">PWM046</a> <a href="#">PWM047</a> PWM051a, PWM051b, PWM051c
[BSW004] Version check	<a href="#">PWM029</a>
[BSW00409] Header files for production code error IDs	<a href="#">PWM066</a>
[BSW00385] List possible error notifications	PWM002a, PWM002b, PWM002c, PWM002d, PWM002e
[BSW00386] Configuration for detecting an error	PWM051a, PWM051b, PWM051c <a href="#">PWM117</a> <a href="#">PWM045</a> <a href="#">PWM046</a> <a href="#">PWM047</a> PWM003a, PWM003b <a href="#">PWM005</a> <a href="#">PWM006a</a> , PWM006b <a href="#">PWM064</a> PWM002a, PWM002b, PWM002c, PWM002d, PWM002e
[BSW161] Microcontroller abstraction	Not Applicable (Requirement on software architecture, not for a single module)
[BSW162] ECU layout abstraction	Not Applicable (Requirement on software architecture, not for a single module)
[BSW005] No hard coded horizontal interfaces within MCAL	Not applicable (Requirement to be taken into account during implementation)
[BSW00415] User dependent include files	Not applicable (Requirement to be taken into account during implementation)
[BSW164] Implementation of interrupt service routines	Not applicable (Requirement to be taken into account during implementation)
[BSW00325] Runtime of interrupt service routines	Not applicable (Requirement to be taken into account during implementation)
[BSW00326] Transition from ISRs to OS tasks	Not applicable (Requirement to be taken into account during implementation/Integration)
[BSW00342] Usage of source code and object code	Not applicable (Requirement to be taken into account during implementation)
[BSW00343] Specification and configuration of time	<a href="#">PWM070</a>
[BSW160] Human-readable configuration data	Not applicable (Requirement to be taken into account during implementation)
[BSW007] HIS MISRA C	Not applicable (Requirement to be taken into account during implementation)
[BSW00300] Module naming convention	Not applicable (Requirement to be taken into account during implementation)
[BSW00413] Accessing instances of BSW modules	Not applicable (Requirement to be taken into account during implementation)
[BSW00347] Naming separation of different instances of BSW drivers	Not applicable (Requirement to be taken into account during implementation)
[BSW00305] Self-defined data types naming convention	Not applicable

<b>Requirement</b>	<b>Satisfied by</b>
	(Requirement to be taken into account during implementation)
[BSW00307] Global variables naming convention	Not applicable (Requirement to be taken into account during implementation)
[BSW00310] API naming convention	Not applicable (Requirement to be taken into account during implementation)
[BSW00373] Main processing function naming convention	Not applicable (Requirement to be taken into account during implementation)
[BSW00327] Error values naming convention	Not applicable (Requirement to be taken into account during implementation)
[BSW00335] Status values naming convention	Not applicable (Requirement to be taken into account during implementation)
[BSW00350] Development error detection keyword	Not applicable (Requirement to be taken into account during implementation)
[BSW00408] Configuration parameter naming convention	Not applicable (Requirement to be taken into account during implementation)
[BSW00410] Compiler switches shall have defined values	Not applicable (Requirement to be taken into account during implementation)
[BSW00411] Get version info keyword	<a href="#">PWM004</a>
[BSW00346] Basic set of module files	<a href="#">PWM065</a>
[BSW158] Separation of configuration from implementation	<a href="#">PWM065</a>
[BSW00314] Separation of interrupt frames and service routines	<a href="#">PWM065</a>
[BSW00370] Separation of callback interface from API	<a href="#">PWM065</a>
[BSW00348] Standard type header	Not applicable (Requirement to be taken into account during implementation)
[BSW00353] Platform specific type header	Not applicable (Requirement to be taken into account during implementation)
[BSW00361] Compiler specific language extension header	Not applicable (Requirement to be taken into account during implementation)
[BSW00301] Limit imported information	Not applicable (Requirement to be taken into account during implementation)
[BSW00302] Limit exported information	Not applicable (Requirement to be taken into account during implementation)
[BSW00328] Avoid duplication of code	Not applicable (Requirement to be taken into account during implementation)
[BSW00312] Shared code shall be reentrant	Not applicable (Requirement to be taken into account during implementation)
[BSW006] Platform independency	Not applicable (Requirement to be taken into account during implementation)
[BSW00357] Standard API return type	Not applicable (Requirement to be taken into account during implementation)

<b>Requirement</b>	<b>Satisfied by</b>
	account during implementation)
[BSW00377] Module specific API return types	Not applicable (Requirement to be taken into account during implementation)
[BSW00304] AUTOSAR integer data types	Not applicable (Requirement to be taken into account during implementation)
[BSW00355] Do not redefine AUTOSAR integer data types	Not applicable (Requirement to be taken into account during implementation)
[BSW00378] AUTOSAR boolean type	Not applicable (Requirement to be taken into account during implementation)
[BSW00306] Avoid direct use of compiler and platform specific keywords	Not applicable (Requirement to be taken into account during implementation)
[BSW00308] Definition of global data	Not applicable (Requirement to be taken into account during implementation)
[BSW00309] Global data with read-only constraint	Not applicable (Requirement to be taken into account during implementation)
[BSW00371] Do not pass function pointers via API	Not applicable (Requirement to be taken into account during implementation)
[BSW00358] Return type of <code>init()</code> functions	Not applicable (Requirement to be taken into account during implementation)
[BSW00414] Parameter of <code>init</code> function	Not applicable (Requirement to be taken into account during implementation)
[BSW00376] Return type and parameters of main processing functions	Not Applicable: (No Main Function)
[BSW00359] Return type of callback functions	Not applicable (Requirement to be taken into account during implementation)
[BSW00360] Parameters of callback functions	Not applicable (Requirement to be taken into account during implementation)
[BSW00329] Avoidance of generic interfaces	Not Applicable (Requirement on software architecture, not for a single module)
[BSW00330] Usage of macros / inline functions instead of functions	Not applicable (Requirement to be taken into account during implementation)
[BSW00331] Separation of error and status values	Not applicable (Requirement to be taken into account during implementation)
[BSW009] Module User Documentation	Not applicable (Requirement to be taken into account during implementation)
[BSW00401] Documentation of multiple instances of configuration parameters	Not applicable (Requirement to be taken into account during implementation)
[BSW172] Compatibility and documentation of scheduling strategy	Not applicable (Requirement to be taken into account during implementation)
[BSW010] Memory resource documentation	Not applicable

<b>Requirement</b>	<b>Satisfied by</b>
	(Requirement to be taken into account during implementation)
[BSW00333] Documentation of callback function context	Not applicable (Requirement to be taken into account during implementation)
[BSW00374] Module vendor identification	<a href="#">PWM054</a>
[BSW00379] Module identification	<a href="#">PWM054</a>
[BSW003] Version identification	Not applicable (Requirement to be taken into account during implementation)
[BSW00318] Format of module version numbers	<a href="#">PWM054</a>
[BSW00321] Enumeration of module version numbers	<a href="#">PWM054</a>
[BSW00341] Microcontroller compatibility documentation	Not applicable (Requirement to be taken into account during implementation)
[BSW00334] Provision of XML file	Not applicable (Requirement to be taken into account during implementation)

Document: General Requirements on SPAL.

<b>Requirements</b>	<b>Satisfied by</b>
[BSW12263] Object code compatible configuration concept	<a href="#">PWM027</a>
[BSW12056] Configuration of notification mechanisms	<a href="#">PWM027</a>
[BSW12267] Configuration of wake-up sources	Not applicable (No wakeup functionality in this BSW)
[BSW12057] Driver module initialization	<a href="#">PWM007</a> <a href="#">PWM062</a> <a href="#">PWM009a</a> , <a href="#">PWM009b</a> , <a href="#">PWM009c</a> <a href="#">PWM052</a>
[BSW12125] Initialization of hardware resources	<a href="#">PWM062</a>
[BSW12163] Driver module deinitialization	<a href="#">PWM010</a> <a href="#">PWM011</a> <a href="#">PWM012</a>
[BSW12461] Responsibility for register initialization	Not applicable (Requirement to be taken into account during implementation)
[BSW12462] Provide settings for register initialization	Not applicable (Requirement to be taken into account during implementation)
[BSW12463] Combine and forward settings for register initialization	Not Applicable (Requirement on configuration tool)
[BSW12068] MCAL initialization sequence	Not applicable (this is a general software integration requirement)
[BSW12069] Wake-up notification of ECU State Manager	Not Applicable (No wakeup functionality in this BSW)
[BSW157] Notification mechanisms of drivers and handlers	<a href="#">PWM025a</a> <a href="#">PWM025b</a>
[BSW12169] Control of operation mode	Not Applicable (No mode used)
[BSW12063] Raw value mode	Conflicts with BSW12459
[BSW12075] Use of application buffers	Not Applicable (No buffers used)
[BSW12129] Resetting of interrupt flags	<a href="#">PWM026</a>
[BSW12064] Change of operation mode during running operation	Not Applicable (No mode used)
[BSW12448] Behavior after development error detection	<a href="#">PWM051a</a> , <a href="#">PWM051b</a> , <a href="#">PWM051c</a>
[BSW12067] Setting of wake-up conditions	Not Applicable (No wakeup functionality)

<b>Requirements</b>	<b>Satisfied by</b>
[BSW12077] Non-blocking implementation	Not applicable (Requirement to be taken into account during implementation)
[BSW12078] Runtime and memory efficiency	Not applicable (Requirement to be taken into account during implementation)
[BSW12092] Access to drivers	Not applicable (this is a driver)
[BSW12265] Configuration data shall be kept constant	Not applicable (Requirement to be taken into account during implementation)
[BSW12264] Specification of configuration items	<a href="#">PWM004</a> <a href="#">PWM027</a>
<b>Requirements (module specific)</b>	<b>Satisfied by</b>
[BSW12459] PWM duty cycle scaling	<a href="#">PWM059</a>
[BSW12383] Resolution of duty cycle	<a href="#">PWM058</a>
[BSW12375] PWM global configuration	<a href="#">PWM004</a>
[BSW12293] Configuration of PWM channel properties	<a href="#">PWM061</a>
[BSW12378] Assign notification to edges	<a href="#">PWM023</a> <a href="#">PWM024</a> <a href="#">PWM061</a>
[BSW12379] Frequency of PWM channel groups	Not applicable (Requirement to be taken into account during implementation)
[BSW12389] Frequency of PWM channels	<a href="#">PWM041</a>
[BSW12380] Initialization of PWM driver	<a href="#">PWM009</a>
[BSW12381] De-Initialization of PWM driver	<a href="#">PWM010</a>
[BSW12295] Set PWM duty cycle	<a href="#">PWM013</a>
[BSW12382] Update of PWM duty cycle	<a href="#">PWM017</a>
[BSW12358] Set PWM output to idle level	<a href="#">PWM021</a>
[BSW12385] Get current state of PWM Channel	<a href="#">PWM022</a>
[BSW12297] Set PWM period	<a href="#">PWM019</a> <a href="#">Pwm_SetPeriodAndDuty</a>
[BSW12299] Activation of PWM edge notification	<a href="#">PWM023</a> <a href="#">PWM024</a> PWM025a, PWM025b
[BSW12386] No PWM emulation	<a href="#">PWM001</a>



## 7 Functional specification

### 7.1 General behavior

**[PWM088]** [All functions from the PWM module except `Pwm_Init`, `Pwm_DeInit` and `Pwm_GetVersionInfo` shall be re-entrant for different PWM channel numbers.

In order to keep a simple module implementation, no check of PWM088 must be performed by the module. ] ()

**[PWM089]** [The Pwm module's user shall ensure the integrity if several function calls are made during run time in different tasks or ISRs for the same PWM channel.

] ()

### 7.2 Time Unit Ticks

#### 7.2.1 Background & Rationale

To get times out of register values it is necessary to know the oscillator frequency, prescalers and so on. Since these settings are made in MCU and/or in other modules it is not possible to calculate such times.

Hence the conversions between time and ticks shall be part of an upper layer.

#### 7.2.2 Requirements

**[PWM070]** [All time units used within the API services of the PWM module shall be of the unit ticks. ] (BSW00343)

### 7.3 Error classification

**[PWM002a]** [The PWM Driver module shall report the development error "PWM\_E\_PARAM\_CONFIG (0x10)", when API `Pwm_Init` service is called with wrong parameter. ] (BSW00337, BSW00385, BSW00386)

**[PWM002b]** [The PWM Driver module shall report the development error "PWM\_E\_UNINIT (0x11)", when API service is used without module initialization. ] (BSW00337, BSW00385, BSW00386)

**[PWM002c]** [The PWM Driver module shall report the development error "PWM\_E\_PARAM\_CHANNEL (0x12)", when API service is used with an invalid channel Identifier. ] (BSW00337, BSW00385, BSW00386)

**[PWM002d]** [The PWM Driver module shall report the development error "PWM\_E\_PERIOD\_UNCHANGEABLE (0x13)", on usage of unauthorized PWM service on PWM channel configured a fixed period. ] (BSW00337, BSW00385, BSW00386)

**[PWM002e]** [The PWM Driver module shall report the development error "PWM\_E\_ALREADY\_INITIALIZED(0x14)", when API Pwm\_Init service is called while the PWM driver has already been initialized. ] (BSW00337, BSW00385, BSW00386)

**[PWM151]** [The PWM Driver module shall report the development error "PWM\_E\_PARAM\_POINTER (0x15)", when API Pwm\_GetVersionInfo service is called with a NULL parameter. ] ( )

<i>Type or error</i>	<i>Relevance</i>	<i>Related error code</i>	<i>Value [hex]</i>
API Pwm_Init service called with wrong parameter	Development	PWM_E_PARAM_CONFIG	0x10
API service used without module initialization	Development	PWM_E_UNINIT	0x11
API service used with an invalid channel Identifier	Development	PWM_E_PARAM_CHANNEL	0x12
Usage of unauthorized PWM service on PWM channel configured a fixed period	Development	PWM_E_PERIOD_UNCHANGEABLE	0x13
API Pwm_Init service called while the PWM driver has already been initialised	Development	PWM_E_ALREADY_INITIALIZED	0x14
API Pwm_GetVersionInfo is called with a NULL parameter.	Development	PWM_E_PARAM_POINTER	0x15
--	Production	--	Assigned externally

To get more details concerning error detection, refer to chapter [API parameter checking](#).

## 7.4 Error Detection

**[PWM003a]** [The detection of development errors is configurable (*ON / OFF*) at pre-compile time. The switch `PwmDevErrorDetect` shall activate or deactivate the detection of all development errors. ] (BSW00338, BSW00369, BSW00386)

**[PWM003b]** [The switch `PwmDevErrorDetect` shall activate or deactivate the detection of all development errors. ] (BSW00338, BSW00369, BSW00386)



**[PWM064]** [If the `PwmDevErrorDetect` switch is enabled, API parameter checking is enabled. The detailed description of the detected errors can be found in chapter

[Error classification](#) and chapter [API specification](#). ] (BSW00386)

**[PWM006a]** [Additional errors that are detected because of specific implementation shall be added in the PWM device specific implementation specification. ] (BSW00339, BSW00421, BSW00422, BSW00420, BSW00386)

**[PWM006b]** [Additional errors that are detected because of hardware properties shall be added in the PWM device specific implementation specification. ] (BSW00339, BSW00421, BSW00422, BSW00420, BSW00386)

## 7.5 Error Notification

**[PWM078]** [Detected development errors shall be reported to the `Det_ReportError` service of the Development Error Tracer (DET) if the pre-processor switch `PwmDevErrorDetect` is set. ] ()

**[PWM005]** [Production errors shall be reported to Diagnostic Event Manager. ] (BSW00339, BSW00421, BSW00422, BSW00420, BSW00386)

## 7.6 Duty Cycle Resolution and scaling

**[PWM058]** [The width of the duty cycle parameter is 16 Bits. ] (BSW12383)

**[PWM059]** [The Pwm module shall comply with the following scaling scheme for the duty cycle:

- 0x0000 means 0%.
- 0x8000 means 100%. 0x8000 gives the highest resolution while allowing 100% duty cycle to be represented with a 16 bit value.

As an implementation guide, the following source code example is given:

```
AbsoluteDutyCycle =
```

```
((uint32)AbsolutePeriodTime * RelativeDutyCycle) >> 15; ]
```

(BSW12459)

## 7.7 Version check

**[PWM029]** [The PWM module shall perform Inter Module Checks to avoid integration of incompatible files.

The imported included files shall be checked by preprocessing directives.

The following version numbers shall be verified:

- <MODULENAME>\_AR\_RELEASE\_MAJOR\_VERSION
- <MODULENAME>\_AR\_RELEASE\_MINOR\_VERSION

Where <MODULENAME> is the module short name of the other (external) modules which provide header files included by the PWM module.

If the values are not identical to the expected values, an error shall be reported. ]  
(BSW004)

## 7.8 Debug Support

**[PWM145]** [Each variable that shall be accessible by AUTOSAR Debugging, shall be defined as global variable. ] ()

**[PWM147]** [All type definitions of variables which shall be debugged shall be accessible by the header file PWM.h. ] ()

**[PWM148]** [The declaration of variables in the header file shall be such that it is possible to calculate the size of the variables by C-"sizeof".] ()

**[PWM149]** [Variables available for debugging shall be described in the respective Basic Software Module Description. ] ()

## 8 API specification

### 8.1 Imported types

This chapter lists all types included from other modules.

#### [PWM094] [

<i>Module</i>	<i>Imported Type</i>
Dem	Dem_EventIdType
	Dem_EventStatusType
Std_Types	Std_ReturnType
	Std_VersionInfoType

] ()

### 8.2 Type definitions

#### 8.2.1 Pwm\_ChannelType

#### [PWM106] [

<b>Name:</b>	Pwm_ChannelType	
<b>Type:</b>	uint	
<b>Range:</b>	8..32 bit	- This is implementation specific but not all values may be valid within the type. This type shall be chosen in order to have the most efficient implementation on a specific microcontroller platform.
<b>Description:</b>	Numeric identifier of a PWM channel.	

] ()

#### 8.2.2 Pwm\_PeriodType

#### [PWM107] [

<b>Name:</b>	Pwm_PeriodType	
<b>Type:</b>	uint	
<b>Range:</b>	8..32 bit	- Implementation specific. This type shall be chosen in order to have the most efficient implementation on a specific microcontroller platform.
<b>Description:</b>	Definition of the period of a PWM channel.	

] ()

#### 8.2.3 Pwm\_OutputStateType

#### [PWM108] [

<b>Name:</b>	Pwm_OutputStateType	
<b>Type:</b>	Enumeration	
<b>Range:</b>	PWM_HIGH	The PWM channel is in high state.
	PWM_LOW	The PWM channel is in low state.

<b>Description:</b>	Output state of a PWM channel.
---------------------	--------------------------------

] ()

## 8.2.4 Pwm\_EdgeNotificationType

[PWM109] [

<b>Name:</b>	Pwm_EdgeNotificationType	
<b>Type:</b>	Enumeration	
<b>Range:</b>	PWM_RISING_EDGE	Notification will be called when a rising edge occurs on the PWM output signal.
	PWM_FALLING_EDGE	Notification will be called when a falling edge occurs on the PWM output signal.
	PWM_BOTH_EDGES	Notification will be called when either a rising edge or falling edge occur on the PWM output signal.
<b>Description:</b>	Definition of the type of edge notification of a PWM channel.	

] ()

## 8.2.5 Pwm\_ChannelClassType

[PWM110] [

<b>Name:</b>	Pwm_ChannelClassType	
<b>Type:</b>	Enumeration	
<b>Range:</b>	PWM_VARIABLE_PERIOD	The PWM channel has a variable period. The duty cycle and the period can be changed.
	PWM_FIXED_PERIOD	The PWM channel has a fixed period. Only the duty cycle can be changed.
	PWM_FIXED_PERIOD_SHIFTED	The PWM channel has a fixed shifted period. Impossible to change it ( only if supported by hardware)
<b>Description:</b>	Defines the class of a PWM channel	

] ()

## 8.2.6 Pwm\_ConfigType

[PWM111] [

<b>Name:</b>	Pwm_ConfigType	
<b>Type:</b>	Structure	
<b>Range:</b>	Hardware dependent structure.	The contents of the initialization data structure are hardware specific.
<b>Description:</b>	This is the type of data structure containing the initialization data for the PWM driver.	

] ()

[PWM061] [Pwm\_ConfigType is a type of data structure containing the initialization data for the PWM driver.

Mandatory parameters:

- Assigned HW channel
- Default value for period
- Default value for duty cycle
- Polarity ( high or low )
- Idle state high or low
- Channel class:
  - Fixed period
  - Fixed period, shifted (if supported by hardware)
  - Variable period

Optional parameters (if supported by hardware):

- Channel phase shift
- Reference channel for phase shift
- Microcontroller specific channel properties

] (BSW12293, BSW12378)

## 8.3 Function definitions

### 8.3.1 Pwm\_Init

[PWM095] [

<b>Service name:</b>	Pwm_Init
<b>Syntax:</b>	void Pwm_Init( const Pwm_ConfigType* ConfigPtr )
<b>Service ID[hex]:</b>	0x00
<b>Sync/Async:</b>	Synchronous
<b>Reentrancy:</b>	Non Reentrant
<b>Parameters (in):</b>	ConfigPtr             Pointer to configuration set
<b>Parameters (inout):</b>	None
<b>Parameters (out):</b>	None
<b>Return value:</b>	None
<b>Description:</b>	Service for PWM initialization.

] ()

**[PWM007]** [The function Pwm\_Init shall initialize all internal variables and the used PWM structure of the microcontroller according to the parameters specified in ConfigPtr. ] (BSW101, BSW12057)

**[PWM062]** [The function Pwm\_Init shall only initialize the configured resources and shall not touch resources that are not configured in the configuration file. ] (BSW12057, BSW12125)

**[PWM009a]** [The function Pwm\_Init shall start all PWM channels with the configured default values. ] (BSW12057)

If the duty cycle parameter equals:

- **[PWM009b]** [0% or 100% : Then the PWM output signal shall be in the state according to the configured polarity parameter] (BSW12057)
- **[PWM009c]** [>0% and <100%: Then the PWM output signal shall be modulated according to parameters period, duty cycle and configured polarity. ] (BSW12057)

**[PWM052]** [The function Pwm\_Init shall disable all notifications. ] (BSW12057)

The reason is that the users of these notifications may not be ready. They can call Pwm\_EnableNotification to start notifications.

**[PWM093]** [The users of the Pwm module shall not call the function Pwm\_Init during a running operation. ] ()

**[PWM046]** [If development error detection is enabled for the Pwm module, the function Pwm\_Init shall raise development error PWM\_E\_PARAM\_CONFIG if ConfigPtr is a null pointer.

Regarding error detection, the requirement PWM051a, PWM051b and PWM051c is applicable to the function Pwm\_Init. ] (BSW00323, BSW00386)

**[PWM116]** [The Pwm module's environment shall not call any function of the Pwm module before having called Pwm\_Init. .] ()

**[PWM118]** [If development error detection is enabled, calling the routine Pwm\_Init while the PWM driver and hardware are already initialized will cause a development error PWM\_E\_ALREADY\_INITIALIZED. The desired functionality shall be left without any action. ] ()

**[PWM120a]** [For pre-compile and link time configuration variants, a NULL pointer shall be passed to the initialization routine. ] ()

**[PWM120b]** [In this case the check for this NULL pointer has to be omitted. ] ()

**[PWM121]** [A re-initialization of the Pwm driver by executing the Pwm\_Init() function requires a de-initialization before by executing a Pwm\_DeInit().] ()

### 8.3.2 Pwm\_DeInit

**[PWM096]** [

<b>Service name:</b>	Pwm_DeInit
<b>Syntax:</b>	void Pwm_DeInit ( void )
<b>Service ID[hex]:</b>	0x01

<b>Sync/Async:</b>	Synchronous
<b>Reentrancy:</b>	Non Reentrant
<b>Parameters (in):</b>	None
<b>Parameters (inout):</b>	None
<b>Parameters (out):</b>	None
<b>Return value:</b>	None
<b>Description:</b>	Service for PWM De-Initialization.

] ()

**[PWM010]** [The function Pwm\_Delnit shall de-initialize the PWM module. ]  
(BSW00336, BSW12163, BSW12381)

**[PWM011]** [The function Pwm\_Delnit shall set the state of the PWM output signals to the idle state. ] (BSW12163)

**[PWM012]** [The function Pwm\_Delnit shall disable PWM interrupts and PWM signal edge notifications. ] (BSW12163)

**[PWM080a]** [The function Pwm\_Delnit shall be pre compile time configurable On/Off by the configuration parameter: PwmDelnitApi. ] (BSW171)

**[PWM080b]** [The function Pwm\_Delnit shall be configurable On/Off by the configuration parameter PwmDelnitApi {PWM\_DE\_INIT\_API}.

Regarding error detection, the requirements PWM117, PWM051a, PWM051b and PWM051c are applicable to the function Pwm\_Delnit. ] (BSW171)

### 8.3.3 Pwm\_SetDutyCycle

**[PWM097]** [

<b>Service name:</b>	Pwm_SetDutyCycle	
<b>Syntax:</b>	void Pwm_SetDutyCycle( Pwm_ChannelType ChannelNumber, uint16 DutyCycle )	
<b>Service ID[hex]:</b>	0x02	
<b>Sync/Async:</b>	Synchronous	
<b>Reentrancy:</b>	Reentrant for different channel numbers	
<b>Parameters (in):</b>	ChannelNumber	Numeric identifier of the PWM
	DutyCycle	Min=0x0000 Max=0x8000
<b>Parameters (inout):</b>	None	
<b>Parameters (out):</b>	None	
<b>Return value:</b>	None	
<b>Description:</b>	Service sets the duty cycle of the PWM channel.	

] ()

**[PWM013]** [The function Pwm\_SetDutyCycle shall set the duty cycle of the PWM channel. ] (BSW12295)

**[PWM014]** [When the requested duty cycle is either 0% or 100%, the function Pwm\_SetDutyCycle shall set the PWM output state to either PWM\_HIGH or PWM\_LOW, with regard to both the configured polarity parameter and the requested duty cycle.

Thus for 0% requested Duty Cycle the output will be the inverse of the configured polarity parameter, and for 100% Duty Cycle the output will be equal to the configured polarity parameter. ] ()

**[PWM016]** [The function Pwm\_SetDutyCycle shall modulate the PWM output signal according to parameters period, duty cycle and configured polarity, when the duty cycle > 0 % and < 100%.] ()

**[PWM017]** [The function Pwm\_SetDutyCycle shall update the duty cycle always at the end of the period if supported by the implementation and configured with PwmDutyCycleUpdatedEndperiod. ] (BSW12382)

Regarding format definition of duty cycle parameter, the requirement PWM058 is applicable to the function Pwm\_SetDutyCycle.

Regarding scaling definition of duty cycle parameter, the requirement PWM059 is applicable to the function Pwm\_SetDutyCycle.

**[PWM018]** [The driver shall forbid the spike on the PWM output signal. ] ()

Regarding error detection, the requirements PWM117, PWM047, PWM051a, PWM051b and PWM051c are applicable to the function Pwm\_SetDutyCycle.

**[PWM082a]** [The function Pwm\_SetDutyCycle shall be pre compile time configurable On/Off by the configuration parameter: PwmSetDutyCycle. .] (BSW171)

**[PWM082b]** [The function Pwm\_SetDutyCycle shall be configurable On/Off by the configuration parameter: PwmSetDutyCycle {PWM\_SET\_DUTY\_CYCLE\_API}.] (BSW171)

### 8.3.4 Pwm\_SetPeriodAndDuty

**[PWM098]** [

<b>Service name:</b>	Pwm_SetPeriodAndDuty
<b>Syntax:</b>	<pre>void Pwm_SetPeriodAndDuty(     Pwm_ChannelType ChannelNumber,     Pwm_PeriodType Period,     uint16 DutyCycle )</pre>
<b>Service ID[hex]:</b>	0x03



<b>Sync/Async:</b>	Synchronous	
<b>Reentrancy:</b>	Reentrant for different channel numbers	
<b>Parameters (in):</b>	ChannelNumber	Numeric identifier of the PWM
	Period	Period of the PWM signal
	DutyCycle	Min=0x0000 Max=0x8000
<b>Parameters (inout):</b>	None	
<b>Parameters (out):</b>	None	
<b>Return value:</b>	None	
<b>Description:</b>	Service sets the period and the duty cycle of a PWM channel	

] ()

**[PWM019]** [The function Pwm\_SetPeriodAndDuty shall set the period and the duty cycle of a PWM channel. ] (BSW12297)

**[PWM076]** [The function Pwm\_SetPeriodAndDuty shall update the period always at the end of the current period if supported by the implementation and configured with PwmPeriodUpdatedEndperiod. ] ()

**[PWM020]** [When updating the PWM period and duty, the driver shall repress any spikes on the PWM output signal. ] ()

The PWM duty cycle parameter is necessary to maintain the consistency between frequency and duty cycle. Refer to [PWM058](#) and [PWM059](#) to know the scaling and format definition of duty cycle parameter

Regarding error detection, the requirements [PWM117](#), [PWM045](#), [PWM047](#), [PWM051a](#), [PWM051b](#) and [PWM051c](#) are applicable to the function Pwm\_SetPeriodAndDuty.

**[PWM041]** [The function Pwm\_SetPeriodAndDuty shall allow changing the period only for the PWM channel declared as variable period type. ] (BSW12389)

**[PWM083a]** [The function Pwm\_SetPeriodAndDuty shall be pre compile time configurable On/Off by the configuration parameter: PwmSetPeriodAndDuty. ] (BSW171)

**[PWM083b]** [The function Pwm\_SetPeriodAndDuty shall be configurable On/Off by the configuration parameter: PwmSetPeriodAndDuty {PWM\_SET\_PERIOD\_AND\_DUTY\_API}.] (BSW171)

**[PWM150]** [If the period is set to zero the setting of the duty-cycle is not relevant. In this case the output shall be zero (zero percent duty-cycle). ] ()

### 8.3.5 Pwm\_SetOutputToldle

**[PWM099]** [

<b>Service name:</b>	Pwm_SetOutputToIdle	
<b>Syntax:</b>	<pre>void Pwm_SetOutputToIdle(     Pwm_ChannelType ChannelNumber )</pre>	
<b>Service ID[hex]:</b>	0x04	
<b>Sync/Async:</b>	Synchronous	
<b>Reentrancy:</b>	Reentrant for different channel numbers	
<b>Parameters (in):</b>	ChannelNumber	Numeric identifier of the PWM
<b>Parameters (inout):</b>	None	
<b>Parameters (out):</b>	None	
<b>Return value:</b>	None	
<b>Description:</b>	Service sets the PWM output to the configured Idle state.	

] ()

**[PWM021]** [The function Pwm\_SetOutputToIdle shall set immediately the PWM output to the configured Idle state. ] (BSW12358)

Regarding error detection, the requirements [PWM117](#), [PWM047](#), [PWM051a](#), [PWM051b](#) and [PWM051c](#) are applicable to the function Pwm\_SetOutputToIdle.

**[PWM084a]** [The function Pwm\_SetOutputToIdle shall be pre compile time configurable On/Off by the configuration parameter: PwmSetOutputToIdle. ] (BSW171)

**[PWM084b]** [The function Pwm\_SetOutputToIdle shall be configurable On/Off by the configuration parameter: PwmSetOutputToIdle {PWM\_SET\_OUTPUT\_TO\_IDLE\_API}.] (BSW171)

**[PWM086a]** [After the call of the function Pwm\_SetOutputToIdle, variable period type channels shall be reactivated using the Api Pwm\_SetPeriodAndDuty( ) to activate the PWM channel with the new passed period. ] ()

**[PWM086b]** [After the call of the function Pwm\_SetOutputToIdle, channels shall be reactivated using the Api Pwm\_SetDutyCycle( ) to activate the PWM channel with the old period. ] ()

**[PWM119]** [After the call of the function Pwm\_SetOutputToIdle, fixed period type channels shall be reactivated using only the API Pwm\_SetDutyCycle() to activate the PWM channel with the old period. ] ()

### 8.3.6 Pwm\_GetOutputState

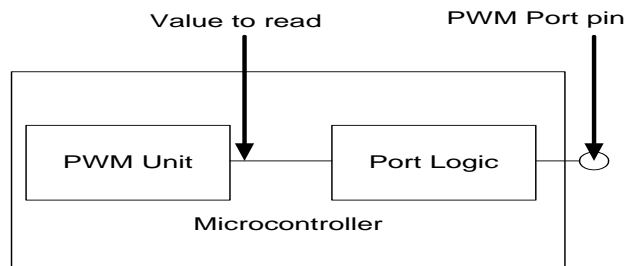
**[PWM100]** [

<b>Service name:</b>	Pwm_GetOutputState	
<b>Syntax:</b>	<pre>Pwm_OutputStateType Pwm_GetOutputState(     Pwm_ChannelType ChannelNumber</pre>	

	)
<b>Service ID[hex]:</b>	0x05
<b>Sync/Async:</b>	Synchronous
<b>Reentrancy:</b>	Reentrant for different channel numbers
<b>Parameters (in):</b>	ChannelNumber      Numeric identifier of the PWM
<b>Parameters (inout):</b>	None
<b>Parameters (out):</b>	None
<b>Return value:</b>	Pwm_OutputStateType      PWM_HIGH The PWM output state is high PWM_LOW The PWM output state is low
<b>Description:</b>	Service to read the internal state of the PWM output signal.

] ()

**[PWM022]** [The function Pwm\_GetOutputState shall read the internal state of the PWM output signal and return it as defined in the diagram below



Regarding error detection, the requirements PWM117, PWM047, PWM051a, PWM051b and PWM051c are applicable to the function Pwm\_GetOutputState. ]  
(BSW12385)

**[PWM085a]** [The function Pwm\_GetOutputState shall be pre compile time configurable On/Off using the configuration parameter: PwmGetOutputState. ]  
(BSW171)

**[PWM085b]** [The function Pwm\_GetOutputState shall be configurable On/Off by the configuration parameter: PwmGetOutputState {PWM\_GET\_OUTPUT\_STATE\_API}.

Due to real time constraint and setting of the PWM channel (project dependant), the output state can be modified just after the call of the service Pwm\_GetOutputState. ]  
(BSW171)

### 8.3.7 Pwm\_DisableNotification

**[PWM101]** [

<b>Service name:</b>	Pwm_DisableNotification
<b>Syntax:</b>	void Pwm_DisableNotification( Pwm_ChannelType ChannelNumber )

<b>Service ID[hex]:</b>	0x06	
<b>Sync/Async:</b>	Synchronous	
<b>Reentrancy:</b>	Reentrant for different channel numbers	
<b>Parameters (in):</b>	ChannelNumber	Numeric identifier of the PWM
<b>Parameters (inout):</b>	None	
<b>Parameters (out):</b>	None	
<b>Return value:</b>	None	
<b>Description:</b>	Service to disable the PWM signal edge notification.	

] ()

**[PWM023]** [The function Pwm\_DisableNotification shall disable the PWM signal edge notification. ] (BSW12378, BSW12299)

**[PWM112a]** [The function Pwm\_DisableNotification shall be pre compile time configurable On/Off using the configuration parameter: PwmNotificationSupported. ]

()

**[PWM112b]** [The function Pwm\_DisableNotification shall be configurable On/Off by the configuration parameter: PwmNotificationSupported {PWM\_NOTIFICATION\_SUPPORTED}.

Regarding error detection, the requirements [PWM117](#), [PWM047](#), [PWM051a](#), [PWM051b](#) and [PWM051c](#) are applicable to the function Pwm\_DisableNotification. ]

()

### 8.3.8 Pwm\_EnableNotification

**[PWM102]** [

<b>Service name:</b>	Pwm_EnableNotification	
<b>Syntax:</b>	<pre>void Pwm_EnableNotification(     Pwm_ChannelType ChannelNumber,     Pwm_EdgeNotificationType Notification )</pre>	
<b>Service ID[hex]:</b>	0x07	
<b>Sync/Async:</b>	Synchronous	
<b>Reentrancy:</b>	Reentrant for different channel numbers	
<b>Parameters (in):</b>	ChannelNumber	Numeric identifier of the PWM
	Notification	Type of notification PWM_RISING_EDGE or PWM_FALLING_EDGE or PWM_BOTH_EDGES
<b>Parameters (inout):</b>	None	
<b>Parameters (out):</b>	None	
<b>Return value:</b>	None	
<b>Description:</b>	Service to enable the PWM signal edge notification according to notification parameter.	

] ()

**[PWM024]** [The function Pwm\_EnableNotification shall enable the PWM signal edge notification according to notification parameter. ] (BSW12378, BSW12299)

**[PWM081]** [The function Pwm\_EnableNotification shall cancel pending interrupts. ] ()

**[PWM113a]** [The function Pwm\_EnableNotification shall be pre compile time configurable On/Off using the configuration parameter: PwmNotificationSupported. ] ()

**[PWM113b]** [The function Pwm\_EnableNotification shall be configurable On/Off by the configuration parameter: PwmNotificationSupported {PWM\_NOTIFICATION\_SUPPORTED}.

Regarding error detection, the requirements [PWM117](#), [PWM047](#), PWM051a, PWM051b and PWM051c are applicable to the function Pwm\_EnableNotification. ] ()

### 8.3.9 Pwm\_GetVersionInfo

**[PWM103]** [

<b>Service name:</b>	Pwm_GetVersionInfo
<b>Syntax:</b>	void Pwm_GetVersionInfo( Std_VersionInfoType* versioninfo )
<b>Service ID[hex]:</b>	0x08
<b>Sync/Async:</b>	Synchronous
<b>Reentrancy:</b>	Reentrant
<b>Parameters (in):</b>	None
<b>Parameters (inout):</b>	None
<b>Parameters (out):</b>	versioninfo  Pointer to where to store the version information of this module.
<b>Return value:</b>	None
<b>Description:</b>	Service returns the version information of this module.

] ()

**[PWM068]** [The function Pwm\_GetVersionInfo shall return the version information of this module. The version information includes:

- Module Id
- Vendor Id
- Vendor specific version numbers (BSW00407).

] (BSW00407)

**[PWM069a]** [The function Pwm\_GetVersionInfo shall be pre compile time configurable On/Off using the configuration parameter: PwmVersionInfoApi. ] (BSW00407)

**[PWM069b]** [The function Pwm\_GetVersionInfo shall be configurable On/Off by the configuration parameter: PwmVersionInfoApi {PWM\_VERSION\_INFO\_API}.]  
(BSW00407)

**[PWM114]** [If source code for caller and callee of Pwm\_GetVersionInfo is available, the Pwm module should realize Pwm\_GetVersionInfo as a macro, defined in the module's header file.

Regarding error detection, the requirement PWM151 is applicable to the function Pwm\_GetVersionInfo. ] ()

## 8.4 Callback notifications

Since the PWM Driver is a module on the lowest architectural layer it doesn't provide any call-back functions for lower layer modules.

## 8.5 Scheduled functions

The PWM driver offers only synchronous services and therefore doesn't need any scheduled functions.

## 8.6 Expected Interfaces

In this chapter all interfaces required from other modules are listed.

### 8.6.1 Mandatory Interfaces

This chapter defines all interfaces which are required to fulfill the core functionality of the module.

As this module is part of the MCAL layer, it access directly to the microcontroller registers and therefore doesn't need any lower interfaces.

### 8.6.2 Optional Interfaces

This chapter defines all interfaces which are required to fulfill an optional functionality of the module.

**[PWM104]** [

<b>API function</b>	<b>Description</b>
Dem_ReportErrorStatus	Queues the reported events from the BSW modules (API is only used by BSW modules). The interface has an asynchronous behavior, because the processing of the event is done within the Dem main function.

Det_ReportError	Service to report development errors.
-----------------	---------------------------------------

] ()

### 8.6.3 Configurable interfaces

In this chapter all interfaces are listed where the target function could be configured. The target function is usually a call-back function. The names of these kinds of interfaces are not fixed because they are configurable.

[PWM105] [

<b>Service name:</b>	Pwm_Notification_<#Channel>
<b>Syntax:</b>	void Pwm_Notification_<#Channel>(void)
<b>Sync/Async:</b>	Synchronous
<b>Reentrancy:</b>	PWM user implementation dependant
<b>Parameters (in):</b>	None
<b>Parameters (inout):</b>	None
<b>Parameters (out):</b>	None
<b>Return value:</b>	None
<b>Description:</b>	The Pwm module shall call the function Pwm_Notification_<#Channel> accordingly to the last call of Pwm_EnableNotification for channel <#Channel>.

] ()

[PWM025] [The Pwm module shall call the function Pwm\_Notification\_<#Channel> accordingly to the last call of Pwm\_EnableNotification and Pwm\_DisableNotification for channel <#Channel>.] (BSW157)

[PWM026] [The Pwm module shall reset the interrupt flag associated to the notification Pwm\_Notification\_<#Channel>] (BSW12129)

[PWM115a] [The Pwm module shall provide the functionality of Pwm\_EnableNotification only when the configuration parameter PwmNotificationSupported is ON. ] ()

[PWM115b] [The Pwm module shall provide the functionality of Pwm\_DisableNotification only when the configuration parameter PwmNotificationSupported is ON. ] ()

[PWM115c] [The Pwm module shall reset the interrupt flag associated to the notification only when the configuration parameter PwmNotificationSupported is ON. ] ()

## 8.7 API parameter checking

**[PWM051a]** [If development error detection for the Pwm module is enabled, and a development error occurs, then the corresponding PWM function shall report the error to the Development Error Tracer. ] (BSW00323, BSW00386)

**[PWM051b]** [If development error detection for the Pwm module is enabled, and a development error occurs, then the corresponding PWM function shall skip the desired functionality in order to avoid any corruptions of data or hardware registers leaving the function without any actions. ] (BSW00323, BSW00386)

**[PWM051c]** [If development error detection for the Pwm module is enabled, and a development error occurs, then the corresponding PWM function shall return PWM\_LOW for the function Pwm\_GetOutputState. ] (BSW00323, BSW00386)

**[PWM117]** [If development error detection for the Pwm module is enabled: if any function (except Pwm\_Init) is called before Pwm\_Init has been called, the called function shall raise development error PWM\_E\_UNINIT. ] (BSW00406, BSW00323, BSW00386)

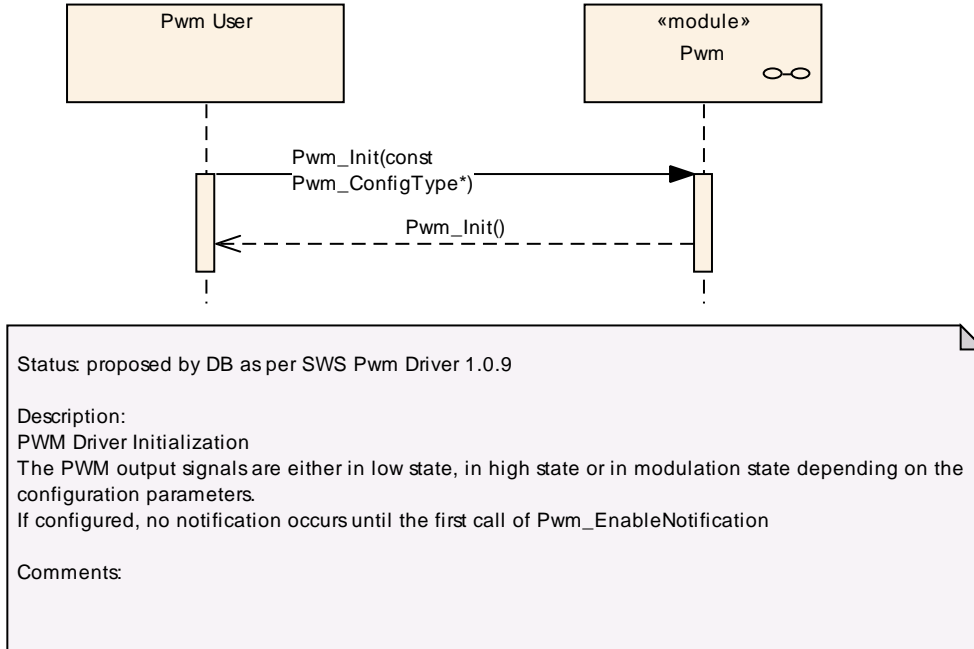
**[PWM045]** [If development error detection for the Pwm module is enabled: The API Pwm\_SetPeriodAndDuty( ) shall check if the given PWM channel is of the channel class type PWM\_VARIABLE\_PERIOD. If this is not the case the development error PWM\_E\_PERIOD\_UNCHANGEABLE shall be called. ] (BSW00323, BSW00386)

**[PWM047]** [If development error detection for the Pwm module is enabled: the PWM functions shall check the parameter ChannelNumber and raise development error PWM\_E\_PARAM\_CHANNEL if the parameter ChannelNumber is invalid. ] (BSW00323, BSW00386)



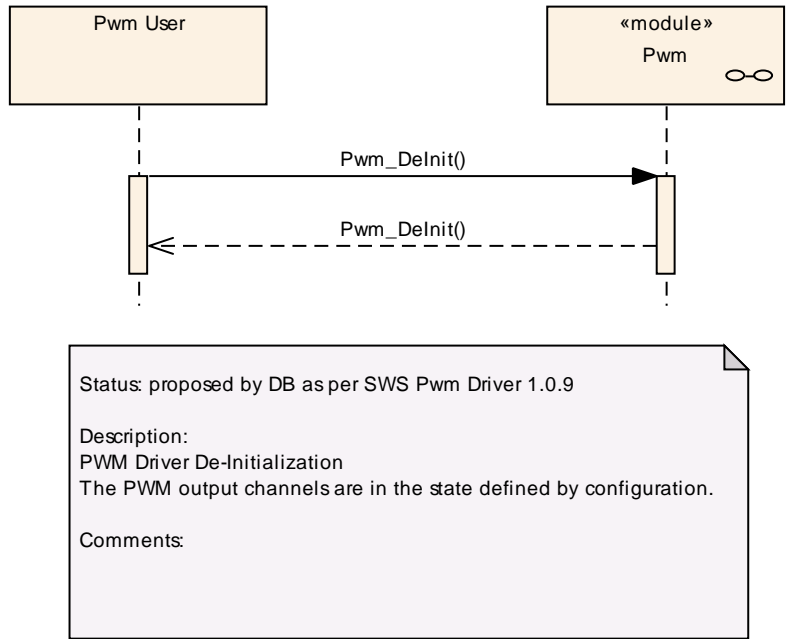
## 9 Sequence diagrams

### 9.1 Initialization



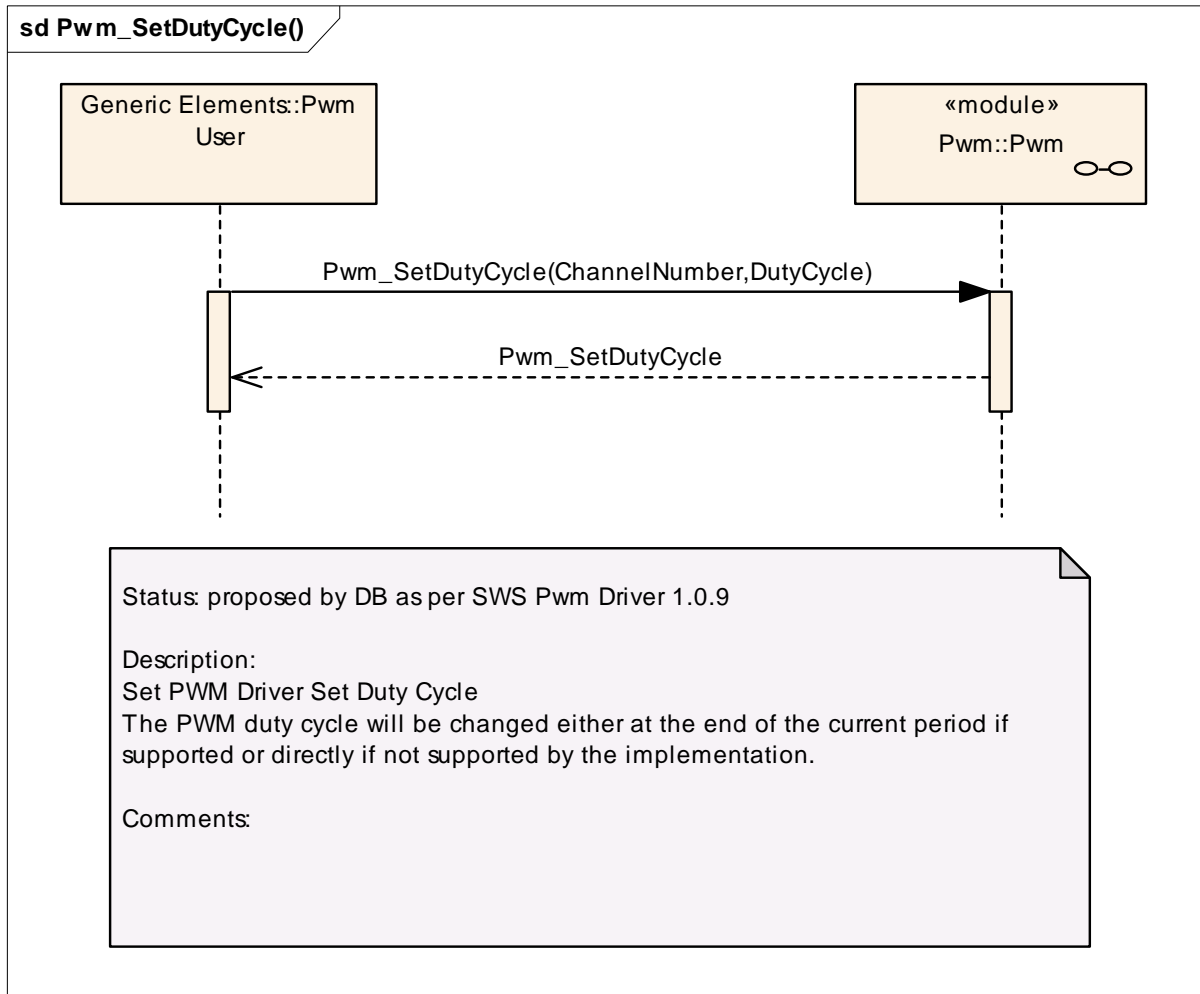
**Figure 3: Pwm initialization**

**9.2 De-initialization**



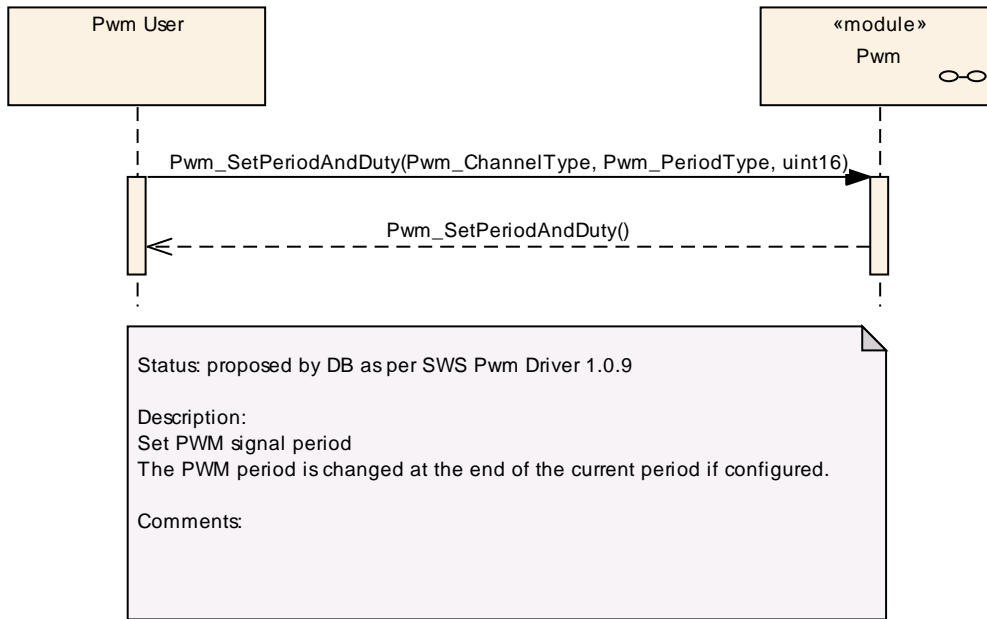
**Figure 4: Pwm de-initialization**

### 9.3 Setting the duty cycle



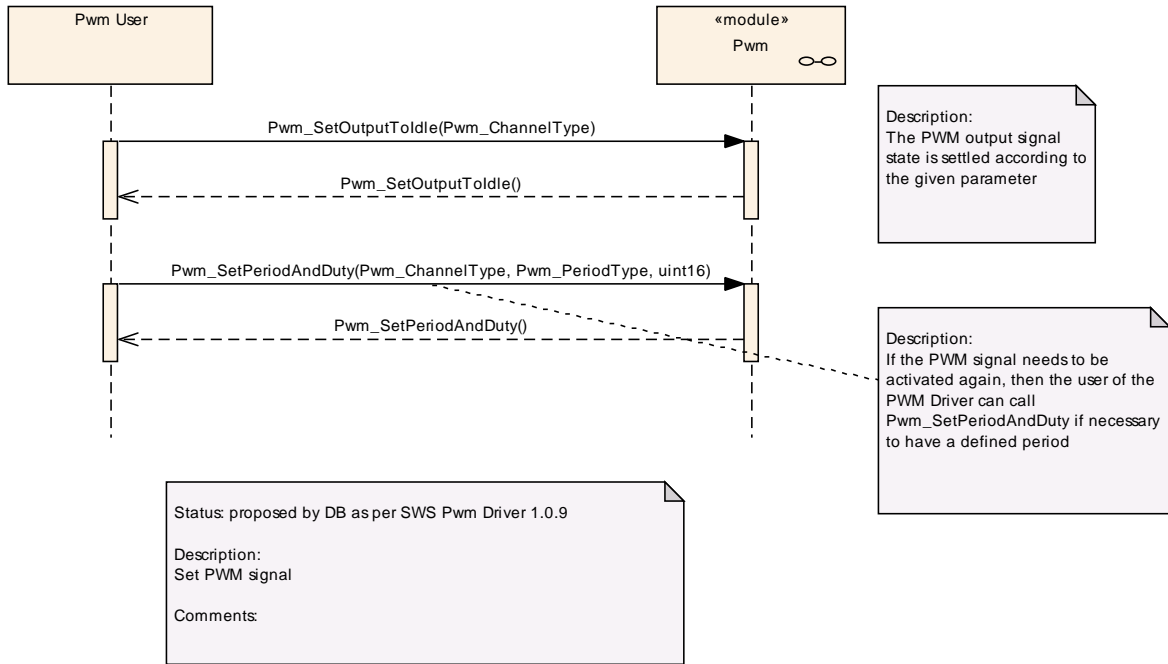
**Figure 5: Setting the duty cycle**

### 9.4 Setting the period and the duty



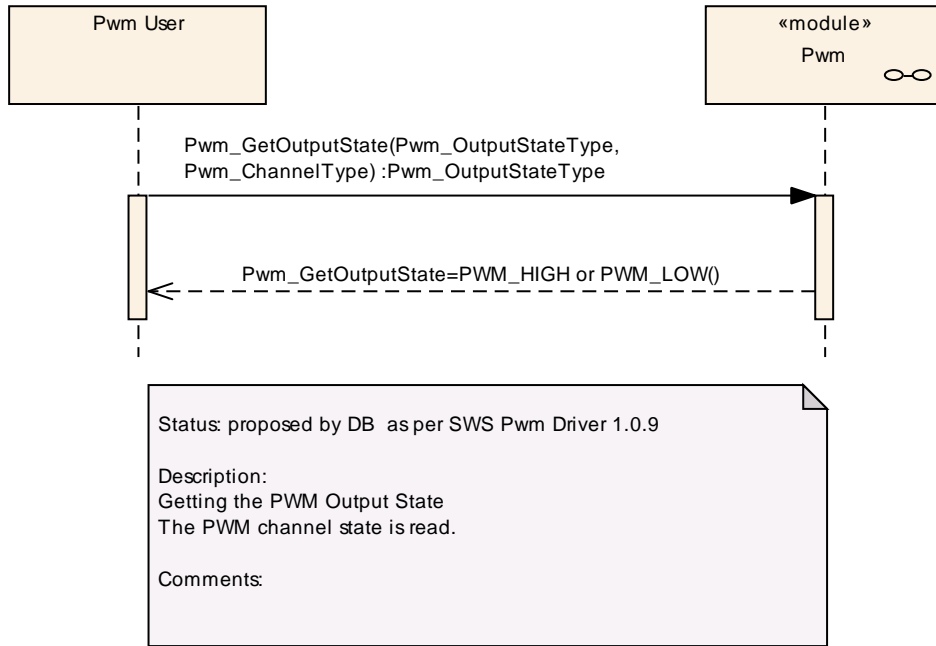
**Figure 6: Setting period and duty cycle**

### 9.5 Setting the PWM output to idle



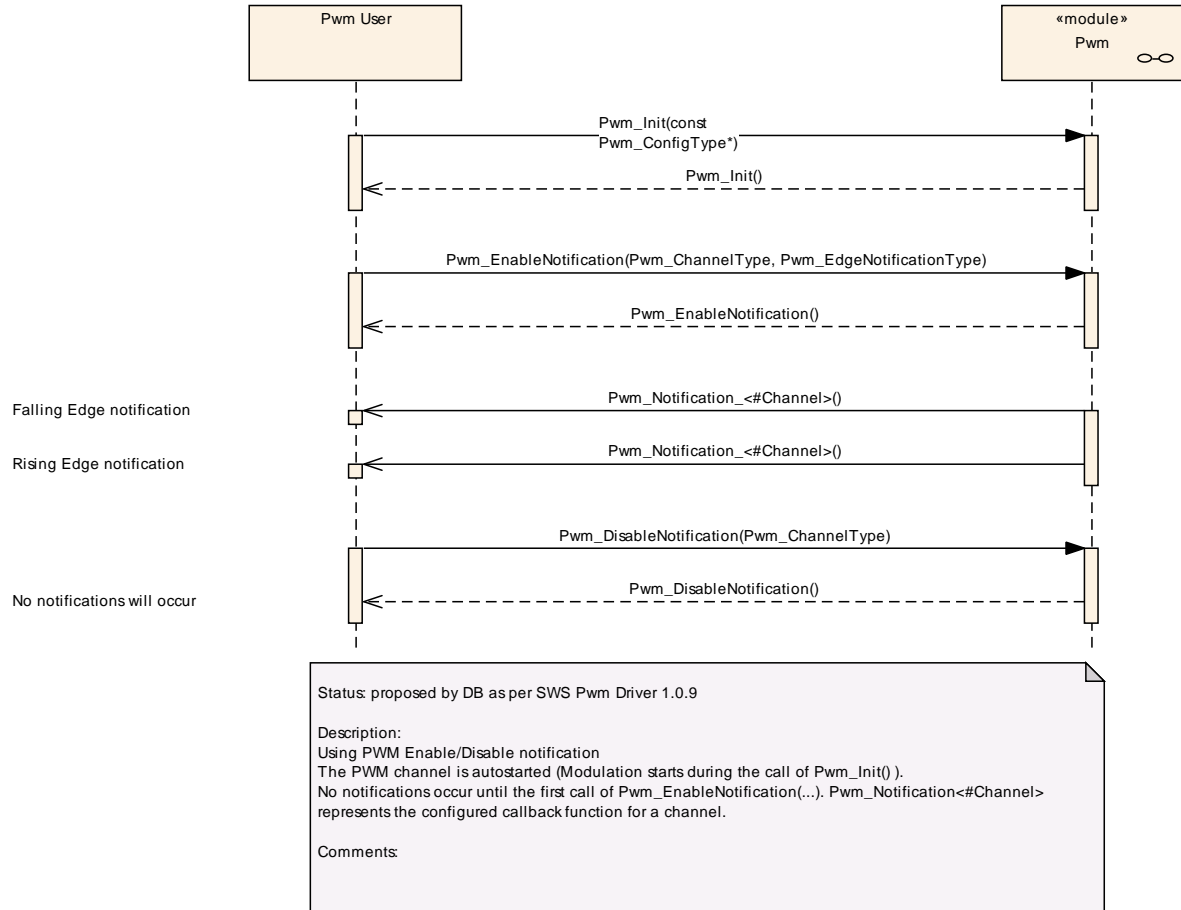
**Figure 7: Setting Pwm output to idle**

### 9.6 Getting the PWM Output state



**Figure 8: Getting Pwm output state**

### 9.7 Using the PWM notifications



**Figure 9: Using Pwm notifications**

## 10 Configuration specification

In general, this chapter defines configuration parameters and their clustering into containers. In order to support the specification Chapter 10.1 describes fundamentals. It also specifies a template (table) you shall use for the parameter specification. We intend to leave Chapter 10.1 in the specification to guarantee comprehension.

Chapter 10.2 specifies the structure (containers) and the parameters of the module PWM Driver.

Chapter 10.3 specifies published information of the module PWM Driver.

### 10.1 How to read this chapter

In addition to this section, it is highly recommended to read the documents:

- AUTOSAR Layered Software Architecture [1]
- AUTOSAR ECU Configuration Specification [6]  
This document describes the AUTOSAR configuration methodology and the AUTOSAR configuration metamodel in detail.

The following is only a short survey of the topic and it will not replace the ECU Configuration Specification document.

#### 10.1.1 Configuration and configuration parameters

Configuration parameters define the variability of the generic part(s) of an implementation of a module. This means that only generic or configurable module implementation can be adapted to the environment (software/hardware) in use during system and/or ECU configuration.

The configuration of parameters can be achieved at different times during the software process: before compile time, before link time or after build time. In the following, the term “configuration class” (of a parameter) shall be used in order to refer to a specific configuration point in time.

#### 10.1.2 Containers

Containers structure the set of configuration parameters. This means:

- *all* configuration parameters are kept in containers.
- (sub-) containers can reference (sub-) containers. It is possible to assign a multiplicity to these references. The multiplicity then defines the possible number of instances of the contained parameters.



### 10.1.3 Specification template for configuration parameters

The following tables consist of three sections:

- the general section
- the configuration parameter section
- the section of included/referenced containers

Pre-compile time - specifies whether the configuration parameter shall be of configuration class *Pre-compile time* or not

<b>Label</b>	<b>Description</b>
x	The configuration parameter shall be of configuration class <i>Pre-compile time</i> .
--	The configuration parameter shall never be of configuration class <i>Pre-compile time</i> .

Link time - specifies whether the configuration parameter shall be of configuration class *Link time* or not

<b>Label</b>	<b>Description</b>
x	The configuration parameter shall be of configuration class <i>Link time</i> .
--	The configuration parameter shall never be of configuration class <i>Link time</i> .

Post Build - specifies whether the configuration parameter shall be of configuration class *Post Build* or not

<b>Label</b>	<b>Description</b>
x	The configuration parameter shall be of configuration class <i>Post Build</i> and no specific implementation is required.
L	<i>Loadable</i> - the configuration parameter shall be of configuration class <i>Post Build</i> and only one configuration parameter set resides in the ECU.
M	<i>Multiple</i> - the configuration parameter shall be of configuration class <i>Post Build</i> and is selected out of a set of multiple parameters by passing a dedicated pointer to the init function of the module.
--	The configuration parameter shall never be of configuration class <i>Post Build</i> .

## 10.2 Containers and configuration parameters

The following chapters summarize all configuration parameters. The detailed meanings of the parameters describe Chapters [Functional specification](#) and Chapter [API specification](#).

### 10.2.1 Variants

**[PWM079]** [VARIANT-PRE-COMPILE (Pre Compile) is limited to pre-compile configuration parameters only. ] ()

**[PWM077]** [VARIANT-POST-BUILD includes a mix of pre-compile, link time and post build configuration parameters. ] ()

### 10.2.2 Pwm

<b>Module Name</b>	Pwm
<b>Module Description</b>	Configuration of Pwm (Pulse Width Modulation) module.

#### Included Containers

Container Name	Multiplicity	Scope / Dependency
PwmChannelConfigSet	1	Multiple Configuration Set Container
PwmConfigurationOfOptApiServices	1	--
PwmGeneral	1	--

### 10.2.3 PwmGeneral

<b>SWS Item</b>	PWM004_Conf :		
<b>Container Name</b>	PwmGeneral{PwmModuleConfiguration}		
<b>Description</b>	--		
<b>Configuration Parameters</b>			

<b>SWS Item</b>	PWM131_Conf :		
<b>Name</b>	PwmDevErrorDetect {PWM_DEV_ERROR_DETECT}		
<b>Description</b>	Switch for enabling the development error detection.		
<b>Multiplicity</b>	1		
<b>Type</b>	EcucBooleanParamDef		
<b>Default value</b>	--		
<b>ConfigurationClass</b>	<b>Pre-compile time</b>	X	All Variants
	<b>Link time</b>	--	
	<b>Post-build time</b>	--	
<b>Scope / Dependency</b>	scope: Module		

<b>SWS Item</b>	PWM132_Conf :		
<b>Name</b>	PwmDutycycleUpdatedEndperiod {PWM_DUTYCYCLE_UPDATED_ENDPERIOD}		
<b>Description</b>	Switch for enabling the update of the duty cycle parameter at the end of the current period. TRUE: update of duty cycle is done at the end of period of currently generated waveform (current waveform is finished). FALSE: update of duty cycle is done immediately (just after service call, current waveform is cut).		
<b>Multiplicity</b>	1		
<b>Type</b>	EcucBooleanParamDef		
<b>Default value</b>	--		
<b>ConfigurationClass</b>	<b>Pre-compile time</b>	X	All Variants
	<b>Link time</b>	--	
	<b>Post-build time</b>	--	
<b>Scope / Dependency</b>	scope: Module		

<b>SWS Item</b>	PWM139_Conf :		
<b>Name</b>	PwmIndex		
<b>Description</b>	Specifies the InstanceId of this module instance. If only one instance is present it shall have the Id 0.		
<b>Multiplicity</b>	1		
<b>Type</b>	EcucIntegerParamDef		
<b>Range</b>	0 .. 4294967295		
<b>Default value</b>	--		

<b>ConfigurationClass</b>	<b>Pre-compile time</b>	X	All Variants
	<b>Link time</b>	--	
	<b>Post-build time</b>	--	
<b>Scope / Dependency</b>	scope: Module		

<b>SWS Item</b>	<b>PWM133_Conf :</b>		
<b>Name</b>	PwmNotificationSupported {PWM_NOTIFICATION_SUPPORTED}		
<b>Description</b>	Switch to indicate that the notifications are supported		
<b>Multiplicity</b>	1		
<b>Type</b>	EcucBooleanParamDef		
<b>Default value</b>	--		
<b>ConfigurationClass</b>	<b>Pre-compile time</b>	X	All Variants
	<b>Link time</b>	--	
	<b>Post-build time</b>	--	
<b>Scope / Dependency</b>	scope: Module		

<b>SWS Item</b>	<b>PWM134_Conf :</b>		
<b>Name</b>	PwmPeriodUpdatedEndperiod {PWM_DUTY_PERIOD_UPDATED_ENDPERIOD}		
<b>Description</b>	Switch for enabling the update of the period parameter at the end of the current period. TRUE: update of period/duty cycle is done at the end of period of currently generated waveform (current waveform is finished). FALSE: update of period/duty cycle is done immediately (just after service call, current waveform is cut).		
<b>Multiplicity</b>	1		
<b>Type</b>	EcucBooleanParamDef		
<b>Default value</b>	--		
<b>ConfigurationClass</b>	<b>Pre-compile time</b>	X	All Variants
	<b>Link time</b>	--	
	<b>Post-build time</b>	--	
<b>Scope / Dependency</b>	scope: Module		

#### No Included Containers

### 10.2.4 PwmChannel

<b>SWS Item</b>	<b>PWM027_Conf :</b>		
<b>Container Name</b>	PwmChannel{PwmChannelConfiguration}		
<b>Description</b>	Configuration of an individual PWM channel.		
<b>Configuration Parameters</b>			

<b>SWS Item</b>	<b>PWM136_Conf :</b>		
<b>Name</b>	PwmChannelClass {PWM_CHANNEL_CLASS}		
<b>Description</b>	Class of PWM Channel. ImplementationType: Pwm_ChannelClassType		
<b>Multiplicity</b>	0..1		
<b>Type</b>	EcucEnumerationParamDef		
<b>Range</b>	PWM_FIXED_PERIOD		Only the duty cycle can be changed.
	PWM_FIXED_PERIOD_SHIFTED		Only the duty cycle can be changed. The period is shifted (only if supported by hardware)
	PWM_VARIABLE_PERIOD		Duty Cycle and period can be changed.

<b>ConfigurationClass</b>	<b>Pre-compile time</b>	X	VARIANT-PRE-COMPILE
	<b>Link time</b>	--	
	<b>Post-build time</b>	X	VARIANT-POST-BUILD
<b>Scope / Dependency</b>	scope: ECU		

<b>SWS Item</b>	<b>PWM137_Conf :</b>		
<b>Name</b>	PwmChannelId		
<b>Description</b>	Channel Id of the PWM channel. This value will be assigned to the symbolic name derived of the PwmChannel container short name.		
<b>Multiplicity</b>	1		
<b>Type</b>	EcucIntegerParamDef (Symbolic Name generated for this parameter)		
<b>Range</b>	0 .. 4294967295		
<b>Default value</b>	--		
<b>ConfigurationClass</b>	<b>Pre-compile time</b>	X	VARIANT-PRE-COMPILE
	<b>Link time</b>	--	
	<b>Post-build time</b>	--	
<b>Scope / Dependency</b>	scope: Module		

<b>SWS Item</b>	<b>PWM138_Conf :</b>		
<b>Name</b>	PwmDutycycleDefault {PWM_DUTYCYCLE_DEFAULT}		
<b>Description</b>	Value of duty cycle used for Initialization 0, represents 0% 0x8000 represents 100%		
<b>Multiplicity</b>	1		
<b>Type</b>	EcucIntegerParamDef		
<b>Range</b>	0 .. 32768		
<b>Default value</b>	--		
<b>ConfigurationClass</b>	<b>Pre-compile time</b>	X	VARIANT-PRE-COMPILE
	<b>Link time</b>	--	
	<b>Post-build time</b>	X	VARIANT-POST-BUILD
<b>Scope / Dependency</b>	scope: ECU		

<b>SWS Item</b>	<b>PWM122_Conf :</b>		
<b>Name</b>	PwmIdleState {PWM_IDLE_STATE}		
<b>Description</b>	The parameter PWM_IDLE_STATE represents the output state of the PWM after the signal is stopped (e.g. call of Pwm_SetOutputToldle).		
<b>Multiplicity</b>	1		
<b>Type</b>	EcucEnumerationParamDef		
<b>Range</b>	PWM_HIGH	The PWM channel output will be set to high ( 3 or 5 V ) in idle state.	
	PWM_LOW	The PWM channel output will be set to low ( 0 V ) in idle state.	
<b>ConfigurationClass</b>	<b>Pre-compile time</b>	X	VARIANT-PRE-COMPILE
	<b>Link time</b>	--	
	<b>Post-build time</b>	X	VARIANT-POST-BUILD
<b>Scope / Dependency</b>	scope: ECU		

<b>SWS Item</b>	<b>PWM123_Conf :</b>		
-----------------	----------------------	--	--

<b>Name</b>	PwmNotification {Pwm_Notification}		
<b>Description</b>	Definition of the Callback function.		
<b>Multiplicity</b>	0..1		
<b>Type</b>	EcucFunctionNameDef		
<b>Default value</b>	"NULL"		
<b>maxLength</b>	--		
<b>minLength</b>	--		
<b>regularExpression</b>	--		
<b>ConfigurationClass</b>	<b>Pre-compile time</b>	X	VARIANT-PRE-COMPILE
	<b>Link time</b>	--	
	<b>Post-build time</b>	X	VARIANT-POST-BUILD
<b>Scope / Dependency</b>	scope: ECU		

<b>SWS Item</b>	<b>PWM124 Conf :</b>		
<b>Name</b>	PwmPeriodDefault {PWM_PERIOD_DEFAULT}		
<b>Description</b>	Value of period used for Initialization.(in seconds).		
<b>Multiplicity</b>	1		
<b>Type</b>	EcucFloatParamDef		
<b>Range</b>	0 .. Inf		
<b>Default value</b>	--		
<b>ConfigurationClass</b>	<b>Pre-compile time</b>	X	VARIANT-PRE-COMPILE
	<b>Link time</b>	--	
	<b>Post-build time</b>	X	VARIANT-POST-BUILD
<b>Scope / Dependency</b>	scope: ECU		

<b>SWS Item</b>	<b>PWM125 Conf :</b>		
<b>Name</b>	PwmPolarity {PWM_POLARITY}		
<b>Description</b>	Defines the starting polarity of each PWM channel.		
<b>Multiplicity</b>	1		
<b>Type</b>	EcucEnumerationParamDef		
<b>Range</b>	PWM_HIGH		The PWM channel output is high at the beginning of the cycle and then goes low when the duty count is reached.
	PWM_LOW		The PWM channel output is low at the beginning of the cycle and then goes high when the duty count is reached.
<b>ConfigurationClass</b>	<b>Pre-compile time</b>	X	VARIANT-PRE-COMPILE
	<b>Link time</b>	--	
	<b>Post-build time</b>	X	VARIANT-POST-BUILD
<b>Scope / Dependency</b>	scope: ECU		

**No Included Containers**

### 10.2.5 PwmChannelConfigSet

<b>SWS Item</b>	<b>PWM140 Conf :</b>		
<b>Container Name</b>	PwmChannelConfigSet [Multi Config Container]		
<b>Description</b>	Multiple Configuration Set Container		
<b>Configuration Parameters</b>			

<b>Included Containers</b>		
<b>Container</b>	<b>Multiplicity</b>	<b>Scope / Dependency</b>

<b>Name</b>		
PwmChannel	1..*	Configuration of an individual PWM channel.

### 10.2.6 PwmConfigurationOfOptApiServices

<b>SWS Item</b>	<b>PWM126_Conf :</b>		
<b>Container Name</b>	PwmConfigurationOfOptApiServices		
<b>Description</b>	--		
<b>Configuration Parameters</b>			

<b>SWS Item</b>	<b>PWM141_Conf :</b>		
<b>Name</b>	PwmDelnitApi {PWM_DE_INIT_API}		
<b>Description</b>	Adds / removes the service Pwm_Delnit() from the code.		
<b>Multiplicity</b>	1		
<b>Type</b>	EcucBooleanParamDef		
<b>Default value</b>	--		
<b>ConfigurationClass</b>	<b>Pre-compile time</b>	X	All Variants
	<b>Link time</b>	--	
	<b>Post-build time</b>	--	
<b>Scope / Dependency</b>	scope: Module		

<b>SWS Item</b>	<b>PWM127_Conf :</b>		
<b>Name</b>	PwmGetOutputState {PWM_GET_OUTPUT_STATE_API}		
<b>Description</b>	--		
<b>Multiplicity</b>	1		
<b>Type</b>	EcucBooleanParamDef		
<b>Default value</b>	--		
<b>ConfigurationClass</b>	<b>Pre-compile time</b>	X	All Variants
	<b>Link time</b>	--	
	<b>Post-build time</b>	--	
<b>Scope / Dependency</b>	scope: Module		

<b>SWS Item</b>	<b>PWM128_Conf :</b>		
<b>Name</b>	PwmSetDutyCycle {PWM_SET_DUTY_CYCLE_API}		
<b>Description</b>	--		
<b>Multiplicity</b>	1		
<b>Type</b>	EcucBooleanParamDef		
<b>Default value</b>	--		
<b>ConfigurationClass</b>	<b>Pre-compile time</b>	X	All Variants
	<b>Link time</b>	--	
	<b>Post-build time</b>	--	
<b>Scope / Dependency</b>	scope: Module		

<b>SWS Item</b>	<b>PWM129_Conf :</b>		
<b>Name</b>	PwmSetOutputToldle {PWM_SET_OUTPUT_TO_IDLE_API}		
<b>Description</b>	--		
<b>Multiplicity</b>	1		
<b>Type</b>	EcucBooleanParamDef		
<b>Default value</b>	--		
<b>ConfigurationClass</b>	<b>Pre-compile time</b>	X	All Variants
	<b>Link time</b>	--	
	<b>Post-build time</b>	--	
<b>Scope / Dependency</b>	scope: Module		

<b>SWS Item</b>	<b>PWM130 Conf :</b>		
<b>Name</b>	PwmSetPeriodAndDuty {PWM_SET_PERIOD_AND_DUTY_API}		
<b>Description</b>	--		
<b>Multiplicity</b>	1		
<b>Type</b>	EcucBooleanParamDef		
<b>Default value</b>	--		
<b>ConfigurationClass</b>	<b>Pre-compile time</b>	X	All Variants
	<b>Link time</b>	--	
	<b>Post-build time</b>	--	
<b>Scope / Dependency</b>	scope: Module		

<b>SWS Item</b>	<b>PWM135 Conf :</b>		
<b>Name</b>	PwmVersionInfoApi {PWM_VERSION_INFO_API}		
<b>Description</b>	Switch to indicate that the Pwm_GetVersionInfo is supported		
<b>Multiplicity</b>	1		
<b>Type</b>	EcucBooleanParamDef		
<b>Default value</b>	--		
<b>ConfigurationClass</b>	<b>Pre-compile time</b>	X	All Variants
	<b>Link time</b>	--	
	<b>Post-build time</b>	--	
<b>Scope / Dependency</b>	scope: Module		

<b>No Included Containers</b>
-------------------------------

### 10.3 Published Information

**[PWM152]** [The standardized common published parameters as required by BSW00402 in the General Requirements on Basic Software Modules [3] shall be published within the header file of this module and need to be provided in the BSW Module Description. The according module abbreviation can be found in the List of Basic Software Modules [8]. ] ()

Additional module-specific published parameters are listed below if applicable.



## 11 Changes

### 11.1 Deleted SWS Items

<b>SWS Item</b>	<b>Rationale</b>
PWM028	Take in account the new template for configuration
PWM030	Take in account the new template for configuration and bug #5523
PWM042	Correction of bug #4007
PWM036	Remove time resolution from the published parameter
PWM055	Remove ( due to SRS publication )
PWM056	Remove ( due to SRS publication )
PWM057	Remove ( due to SRS publication )
PWM015	Review comments of SVDO
PWM048	Correction
PWM031	Removal of Callback requirements
PWM032	Removal of Callback requirements
PWM033	Removal of Callback requirements
PWM040	Implementation is HW dependent

### 11.2 Replaced SWS Items

<b>SWS Item of Release 1</b>	<b>replaced by SWS Item</b>	<b>Rationale</b>

### 11.3 Changed SWS Items

<b>SWS Item</b>	<b>Rationale</b>
<a href="#">PWM002</a>	Take in account the new template sentence to describe requirement
<a href="#">PWM003</a>	Take in account the new template sentence to describe requirement
<a href="#">PWM004</a>	Take in account the new template for configuration
PWM015	Correct
<a href="#">PWM027</a>	Take in account the new template for configuration and bug #4055
<a href="#">PWM029</a>	Take in account the new template
<a href="#">PWM054</a>	Implementation
<a href="#">PWM022</a>	Correction
<a href="#">PWM021</a>	Remove abstraction level and correct
<a href="#">PWM009</a>	Remove abstraction level
<a href="#">PWM025</a>	Clarify the name of the notification
<a href="#">PWM011</a>	Remove abstraction level
<a href="#">PWM014</a>	Remove abstraction level
PWM015	Remove abstraction level
<a href="#">PWM016</a>	Remove abstraction level
<a href="#">PWM051</a>	Remove abstraction level
<a href="#">PWM009</a>	Review comments of SVDO
<a href="#">PWM014</a>	Review comments of SVDO
<a href="#">PWM086</a>	Adapted reactivation concept for variable period type PWM channels

## 11.4 Added SWS Items

<b>SWS Item</b>	<b>Rationale</b>
<a href="#">PWM064</a>	Take in account the new template sentence to describe requirement
<a href="#">PWM065</a>	Take in account the new template sentence to describe requirement
<a href="#">PWM066</a>	Take in account the new template sentence to describe requirement
<a href="#">PWM067</a>	Take in account the new template sentence to describe requirement
<a href="#">PWM068</a>	Implementation of Pwm_GetVersionInfo
<a href="#">PWM069</a>	Implementation of Pwm_GetVersionInfo
<a href="#">PWM070</a>	Take in account configuration of time
<a href="#">PWM073</a>	Take in account new SRS of Autosar Srs_General BSW00384
<a href="#">PWM074</a>	Take in account new SRS of Autosar_Srs_General BSW00384
<a href="#">PWM075</a>	Take in account new SRS of Autosar_Srs_General BSW00381, BSW00412, BSW00435, BSW00436
<a href="#">PWM076</a>	
<a href="#">PWM077</a>	Variant definition
<a href="#">PWM078</a>	Add this requirement to comply with chapter Error notification of the SWS template
<a href="#">PWM079</a>	Add PC variant
<a href="#">PWM080</a>	Configuration of optional API service "Pwm_DeInit()"
<a href="#">PWM081</a>	Cancel pending interrupts
<a href="#">PWM082</a>	Configuration of optional API service "Pwm_SetDutyCycle()"
<a href="#">PWM083</a>	Configuration of optional API service "Pwm_SetPeriodAndDuty()"
<a href="#">PWM084</a>	Configuration of optional API service "Pwm_SetOutputTolDle()"
<a href="#">PWM085</a>	Configuration of optional API service "Pwm_GetOutputState()"
<a href="#">PWM118</a>	Added DET error PWM_E_ALREADY_INITIALIZED
<a href="#">PWM119</a>	Extend reactivation concept for fixed period type PWM channels
<a href="#">PWM120</a>	NULL pointer check of configuration structure in initialization function
<a href="#">PWM121</a>	Re-initialization of MCAL modules

## 12 Changes during SWS Improvements by Technical Office

### 12.1 Deleted SWS Items

<b>SWS Item</b>	<b>Rationale</b>
PWM060	No requirement, just information; ID removed but text left in
PWM073	No requirement, just information; ID removed but text left in
PWM074	No requirement, just information; ID removed but text left in
PWM035	Requirement and text removed as this is covered by the API definition in the table PWM105

### 12.2 Replaced SWS Items

<b>SWS Item of Release 1</b>	<b>replaced SWS Item by</b>	<b>Rationale</b>
PWM034	<a href="#">PWM088</a> , <a href="#">PWM089</a>	Made requirement atomic
PWM044	<a href="#">PWM116</a> , <a href="#">PWM117</a>	Made requirement atomic

### 12.3 Changed SWS Items

Many requirements have been changed to improve understandability without changing the technical contents.

### 12.4 Added SWS Items

<b>SWS Item</b>	<b>Rationale</b>
<a href="#">PWM086</a>	Caveat for Pwm_SetOutputToldle.
<a href="#">PWM093</a>	Caveat for Pwm_Init
<a href="#">PWM094</a>	UML Model linking of imported types
<a href="#">PWM095</a>	UML Model linking of Pwm_Init
<a href="#">PWM096</a>	UML Model linking of Pwm_DeInit
<a href="#">PWM097</a>	UML Model linking of Pwm_SetDutyCycle
<a href="#">PWM098</a>	UML Model linking of Pwm_SetPeriodAndDuty
<a href="#">PWM099</a>	UML Model linking of Pwm_SetOutputToldle
<a href="#">PWM100</a>	UML Model linking of Pwm_GetOutputState
<a href="#">PWM101</a>	UML Model linking of Pwm_DisableNotification
<a href="#">PWM102</a>	UML Model linking of Pwm_EnableNotification
<a href="#">PWM103</a>	UML Model linking of Pwm_GetversionInfo
<a href="#">PWM104</a>	UML Model linking of the optional interfaces
<a href="#">PWM105</a>	UML Model linking of Pwm_Notification_<#Channel>
<a href="#">PWM106</a>	UML Model linking of Pwm_ChannelType
<a href="#">PWM107</a>	UML Model linking of Pwm_PeriodType
<a href="#">PWM108</a>	UML Model linking of Pwm_OutputStateType
<a href="#">PWM109</a>	UML Model linking of Pwm_EdgeNotificationType
<a href="#">PWM110</a>	UML Model linking of Pwm_ChannelClassType
<a href="#">PWM111</a>	UML Model linking of Pwm_ConfigType
<a href="#">PWM112</a>	Gave explicit ID to note out of Pwm_DisableNotification
<a href="#">PWM113</a>	Gave explicit ID to note out of Pwm_EnableNotificaiton
<a href="#">PWM114</a>	Gave an ID to a suggestion out of Pwm_GetVersionInfo

<a href="#">PWM115</a>	Gave an ID to the dependency of the callbacks on the config parameter PwmNotificationSupported
------------------------	--

## 13 Not applicable requirements

**[PWM153]** [These requirements are not applicable to this specification.] (BSW159, BSW167, BSW170, BSW00419, BSW00383, BSW00375, BSW00416, BSW168, BSW00423, BSW00424, BSW00425, BSW00426, BSW00427, BSW00428, BSW00429, BSW00431, BSW00432, BSW00433, BSW00434, BSW00417, BSW161, BSW162, BSW005, BSW00415, BSW164, BSW00325, BSW00326, BSW00342, BSW160, BSW007, BSW00300, BSW00413, BSW00347, BSW00305, BSW00307, BSW00310, BSW00373, BSW00327, BSW00335, BSW00350, BSW00408, BSW00410, BSW00348, BSW00353, BSW00361, BSW00301, BSW00302, BSW00328, BSW00312, BSW006, BSW00357, BSW00377, BSW00304, BSW00355, BSW00378, BSW00306, BSW00308, BSW00309, BSW00371, BSW00358, BSW00414, BSW00376, BSW00359, BSW00360, BSW00329, BSW00330, BSW00331, BSW009, BSW00401, BSW172, BSW010, BSW00333, BSW003, BSW00341, BSW00334, BSW12267, BSW12461, BSW12462, BSW12463, BSW12068, BSW12069, BSW12169, BSW12075, BSW12064, BSW12067, BSW12077, BSW12078, BSW12092, BSW12265, BSW12379)