

Document Title	Specification of Vehicle-2-X Management
Document Owner	AUTOSAR
Document Responsibility	AUTOSAR
Document Identification No	796

Document Status	published
Part of AUTOSAR Standard	Classic Platform
Part of Standard Release	R24-11

Document Change History			
Date	Release	Changed by	Description
2024-11-27	R24-11	AUTOSAR Release Management	<ul style="list-style-type: none"> Automatic alignment modifications of imported types and required interfaces
2023-11-23	R23-11	AUTOSAR Release Management	<ul style="list-style-type: none"> Removal of Tx confirmation and transaction ID Various corrections in service API and V2XFac API mapping
2022-11-24	R22-11	AUTOSAR Release Management	<ul style="list-style-type: none"> Modification of ECUC configuration related to security configuration Added V2xM module id and missing ECUC id Editorial changes to reflect the introduction of V2xDM
2021-11-25	R21-11	AUTOSAR Release Management	<ul style="list-style-type: none"> Return codes and error reporting added
2020-11-30	R20-11	AUTOSAR Release Management	<ul style="list-style-type: none"> Editorial Changes
2019-11-28	R19-11	AUTOSAR Release Management	<ul style="list-style-type: none"> Update referenced Documents Editorial changes Changed Document Status from Final to Published



△

2018-10-31	4.4.0	AUTOSAR Release Management	<ul style="list-style-type: none"> ● Header file clean-up ● Fixed position and time parameter names ● Editorial Changes
2017-12-08	4.3.1	AUTOSAR Release Management	<ul style="list-style-type: none"> ● Editorial Changes
2016-11-30	4.3.0	AUTOSAR Release Management	<ul style="list-style-type: none"> ● Initial Release

Disclaimer

This work (specification and/or software implementation) and the material contained in it, as released by AUTOSAR, is for the purpose of information only. AUTOSAR and the companies that have contributed to it shall not be liable for any use of the work.

The material contained in this work is protected by copyright and other types of intellectual property rights. The commercial exploitation of the material contained in this work requires a license to such intellectual property rights.

This work may be utilized or reproduced without any modification, in any form or by any means, for informational purposes only. For any other purpose, no part of the work may be utilized or reproduced, in any form or by any means, without permission in writing from the publisher.

The work has been developed for automotive applications only. It has neither been developed, nor tested for non-automotive applications.

The word AUTOSAR and the AUTOSAR logo are registered trademarks.

Contents

1	Introduction and functional overview	7
1.1	Architectural overview	7
1.2	Functional overview	8
1.2.1	Position and Time management (POTI)	8
1.2.2	Identity	8
1.2.3	Security	8
1.2.4	Decentralized Congestion Control (DCC)	8
2	Acronyms and Abbreviations	9
3	Related documentation	10
3.1	Input documents & related standards and norms	10
3.2	Related specification	11
4	Constraints and assumptions	12
4.1	Limitations	12
4.2	Applicability to car domains	12
4.3	Authorisation Tickets and Pseudonyms	12
5	Dependencies to other modules	13
5.1	AUTOSAR DET (Default Error Tracer)	13
5.2	AUTOSAR EcuM (Ecu State Manager)	13
5.3	AUTOSAR CSM (Cryptographic Service Manager)	13
5.4	AUTOSAR NvM (NVRAMManager)	13
5.5	AUTOSAR Math libraries (Mfl, Efx)	13
5.6	File structure	14
5.6.1	Code file structure	14
6	Requirements Tracing	15
7	Functional specification	17
7.1	Startup behavior	17
7.2	Shutdown behavior	17
7.3	Identity management	17
7.4	Security	20
7.5	Position and Time	21
7.6	DCC Management	22
7.7	Error Classification	23
7.7.1	Development Errors	24
7.7.2	Runtime Errors	24
7.7.3	Production Errors	24
7.7.4	Extended Production Errors	24
7.8	Security Events	24
8	API specification	25

8.1	Imported types	25
8.2	Type definitions	26
8.2.1	V2xM_ConfigType	26
8.2.2	V2x_GnPacketTransportType	26
8.2.3	V2x_GnDestinationType	27
8.2.4	V2x_GnAddressType	27
8.2.5	V2x_GnAreaShapeType	27
8.2.6	V2x_GnDestinationAreaType	28
8.2.7	V2x_GnTxResultType	29
8.2.8	V2x_SecProfileType	29
8.2.9	V2x_SecReturn Type	30
8.2.10	V2x_MaximumPacketLifetimeType	30
8.2.11	V2x_TrafficClassIdType	30
8.2.12	V2x_ChanType	31
8.2.13	V2x_GnUpperProtocolType	31
8.2.14	V2x_GnLongPositionVectorType	32
8.2.15	V2x_PseudonymType	32
8.2.16	V2x_SecReportType	33
8.3	Function definitions	33
8.3.1	V2xM_Init	34
8.3.2	V2xM_GetVersionInfo	34
8.3.3	V2xM_GetPositionAndTime	35
8.3.4	V2xM_GetRefTimePtr	36
8.3.5	V2xM_V2xGn_ReqEncap	36
8.3.6	V2xM_V2xGn_ReqDecap	38
8.3.7	V2xM_TriggerPseudonymChange	40
8.3.8	V2xM_LockPseudonymChange	40
8.3.9	V2xM_UnlockPseudonymChange	41
8.3.10	V2xM_V2xGn_SetGlobalRxParams	42
8.3.11	V2xM_V2xGn_GetGlobalTxParams	43
8.3.12	V2xM_CalcDistance	44
8.3.13	V2xM_CalcHeadingInTolerance	45
8.3.14	V2xM_SetTollingZoneInformation	45
8.3.15	V2xM_Vdp_GetNextLongTermCertificateExpirationDate	46
8.3.16	V2xM_Vdp_GetNextPseudonymCertificateExpirationDate	47
8.3.17	V2xM_Vdp_SetPositionAndTime	48
8.3.18	V2xM_GetTime	48
8.4	Callback notifications	49
8.4.1	CSM callback interfaces	49
8.5	Scheduled functions	49
8.5.1	V2xM_MainFunction	49
8.6	Expected interfaces	50
8.6.1	Mandatory interfaces	50
8.6.2	Optional interfaces	51
8.7	Service Interfaces	52
8.7.1	Client-Server-Interfaces	52

8.7.1.1	V2xM_Vdp	52
8.7.1.2	V2xM_PseudonymChange	54
8.7.1.3	V2xM_GeoMath	55
8.7.2	Implementation Data Types	56
8.7.2.1	ImplementationDataType V2xM_PositionAndTimeType	56
8.7.3	Ports	57
8.7.3.1	V2xM_V2xM_GeoMath	57
8.7.3.2	V2xM_V2xM_PseudonymChange	58
8.7.3.3	V2xM_V2xM_Vdp	58
9	Sequence diagrams	59
9.1	V2xM_Init - Time initialization	59
9.2	Position and time update for V2xGn	59
9.3	Position and time update for V2xFac	60
9.4	Time handling at reception	60
9.5	Initialization of Wireless Drivers	61
10	Configuration specification	62
10.1	How to read this chapter	62
10.2	Containers and configuration parameters	62
10.2.1	Variants	62
10.2.2	V2xM	62
10.2.3	V2xMConfig	63
10.2.4	V2xMSecurityConfig	63
10.2.5	V2xMGeneral	66
10.3	Published Information	68
A	History of Specification Items	69
A.1	Specification Item History of this document compared to AUTOSAR R24-11.	69
A.1.1	Added Specification Items in R24-11	69
A.1.2	Changed Specification Items in R24-11	69
A.1.3	Deleted Specification Items in R24-11	69
A.2	Specification Item History of this document compared to AUTOSAR R23-11.	69
A.2.1	Added Specification Items in R23-11	69
A.2.2	Changed Specification Items in R23-11	73
A.2.3	Deleted Specification Items in R23-11	73

1 Introduction and functional overview

This document specifies the functionality, API and the configuration of the AUTOSAR Basic Software module Vehicle-2-X Management (V2xM). The Vehicle-2-X Management module together with the Vehicle-2-X Facilities (V2xFac) [1], Vehicle-2-X Data Manager (V2xDM) [2], Vehicle-2-X Basic Transport Protocol (V2xBtp) [3], the Vehicle-2-X GeoNetworking (V2xGn) [4] and the communication driver layer [5] [6] [7] forms the V2X stack within the AUTOSAR architecture.

V2xM is designed to be hardware independent. It controls and supports the services of V2X protocol stack entities.

Note that figures in this document are not regarded as requirements.

1.1 Architectural overview

The position of the V2xM module within the Layered Software Architecture is shown below.

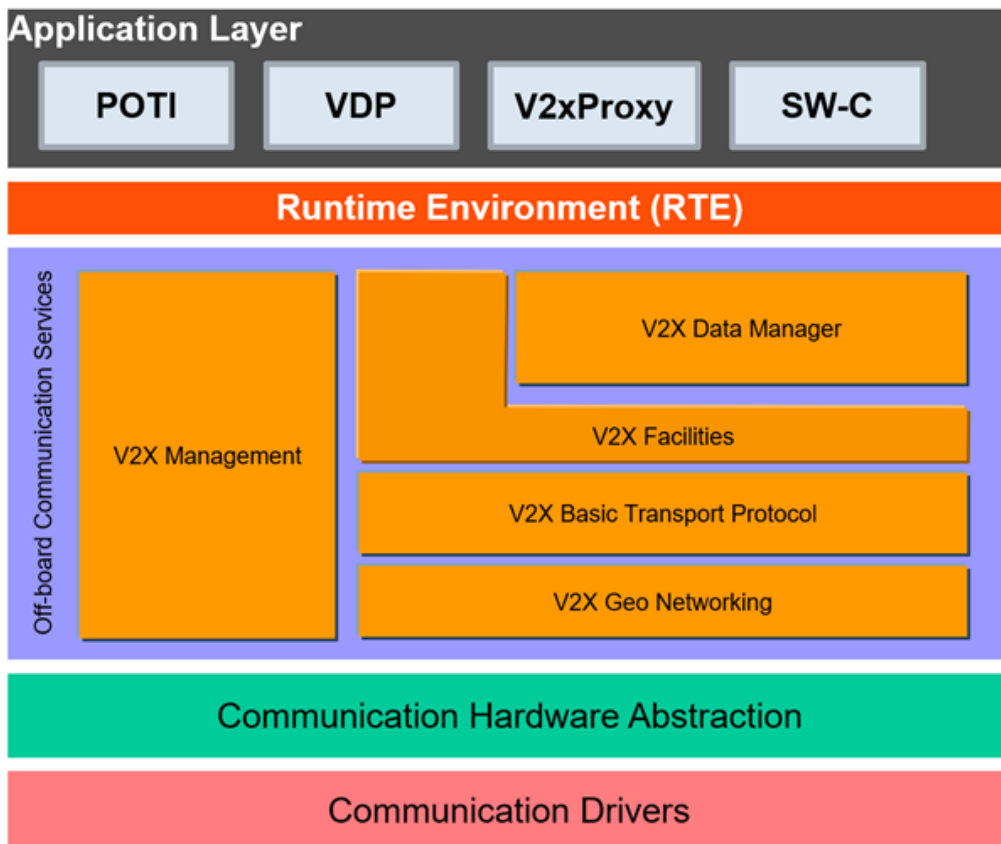


Figure 1.1: AUTOSAR BSW software architecture - V2xM scope

1.2 Functional overview

The V2xM module manages the operation of the V2X protocol stack. It does support the V2X protocol stack modules with a number of services and furthermore provide some Application interfaces to let applications control the V2X-Stack within the limited range that the ETSI/C2C-CC Requirements left for applications..

1.2.1 Position and Time management (POTI)

Within the AUTOSAR architecture, the POTI service is a V2X Application within the Application layer. The V2xM module takes positional information from the POTI service and makes is available to the V2xFac and V2xGn modules [8].

1.2.2 Identity

A V2X Station has one identity that is used by every V2X module, that uses identity in its header information. For security and privacy reasons, the identity changes over time and travel distance. All modules that are using the identity shall be notified.

1.2.3 Security

V2xM provides standardized security services to the V2X-Stack according to ETSI specification, this includes signing and verification of messages as described in [9]. The APIs shall be implemented using CSM services provided by AUTOSAR.

1.2.4 Decentralized Congestion Control (DCC)

V2xM provides congestion control services for the V2X Stack, to provide the current V2X radio congestion state for a specific channel.

2 Acronyms and Abbreviations

The glossary below includes acronyms and abbreviations relevant to the V2xManagement module that are not included in the AUTOSAR glossary [10].

Abbreviation / Acronym:	Description:
DEM	Diagnostic Event Manager
DET	Default Error Tracer
API	Application Programming Interface
BSW	Basic Software
BTP	Basic Transport Protocol
CAM	Cooperative Awareness Message
DCC	Decentralized Congestion Control
DENM	Decentralized Environmental Notification Messages
EcuM	Electronic Control Unit Manager
ITS	Intelligent Transport System
LTC	Long Term Certificate
POTI	Position and Time management
VOD	Verification on Demand
hashedID8	Calculated by first computing the SHA 256 hash of the Authorisation Ticket, and then taking the least significant eight bytes from the hash output
ECDSA	Elliptic Curve Digital Signature Algorithm

Table 2.1: Acronyms and abbreviations used in the scope of this Document

3 Related documentation

3.1 Input documents & related standards and norms

- [1] Specification of Vehicle-2-X Facilities
AUTOSAR_CP_SWS_V2XFacilities
- [2] Specification of Vehicle-2-X Data Manager
AUTOSAR_CP_SWS_V2XDataManager
- [3] Specification of Vehicle-2-X Basic Transport
AUTOSAR_CP_SWS_V2XBasicTransport
- [4] Specification of Vehicle-2-X Geo Networking
AUTOSAR_CP_SWS_V2XGeoNetworking
- [5] Specification of Ethernet Interface
AUTOSAR_CP_SWS_EthernetInterface
- [6] Specification of Wireless Ethernet Driver
AUTOSAR_CP_SWS_WirelessEthernetDriver
- [7] Specification of Wireless Ethernet Transceiver Driver
AUTOSAR_CP_SWS_WirelessEthernetTransceiverDriver
- [8] EN 302 890-2 v0.0.3: Intelligent Transport System (ITS); Facilities layer function;
Part 2: Position and Time management (PoTi); Release 2
- [9] ETSI TS 102 723-8 V1.1.1: Intelligent Transport Systems (ITS); OSI cross-layer
topics; Part 8: Interface between security entity and network and transport layer
- [10] Glossary
AUTOSAR_FO_TR_Glossary
- [11] General Specification of Basic Software Modules
AUTOSAR_CP_SWS_BSWGeneral
- [12] Specification of Default Error Tracer
AUTOSAR_CP_SWS_DefaultErrorTracer
- [13] Specification of ECU State Manager
AUTOSAR_CP_SWS_ECUSTateManager
- [14] Specification of NVRAM Manager
AUTOSAR_CP_SWS_NVRAMManager
- [15] General Requirements on Basic Software Modules
AUTOSAR_CP_RS_BSWGeneral
- [16] Requirements on Vehicle-2-X Communication
AUTOSAR_CP_RS_V2XCommunication
- [17] Security Policy & Governance Framework for Deployment and Operation of Eu-

European Cooperative Intelligent Transport Systems (C-ITS), Release 1, December 2017

- [18] Certificate Policy for Deployment and Operation of European Cooperative Intelligent Transport Systems (C-ITS), Release 1.1, June 2018
- [19] TS 102 687 V1.2.1: Decentralized Congestion Control Mechanisms for Intelligent Transport Systems operating in the 5 GHz range; Access layer part
- [20] TS 102 894-2 V1.3.1: Intelligent Transport Systems (ITS); Users and applications requirements; Applications and facilities layer common data dictionary
- [21] EN 302 637-2 V1.4.1: Intelligent Transport Systems (ITS); Vehicular Communications; Basic Set of Applications; Part 2: Specification of Cooperative Awareness Basic Service
- [22] EN 302 571 V2.1.1: Intelligent Transport Systems (ITS); Radio communications equipment operating in the 5 855 MHz to 5 925 MHz frequency band; Harmonized EN covering the essential requirements of article 3.2 of the R&TTE Directive
- [23] Car 2 Car Communication Consortium; Basic System Profile release 1.3

3.2 Related specification

AUTOSAR provides a General Specification on Basic Software modules [11], which is also valid for V2xM.

Thus, the specification SWS BSW General shall be considered as additional and required specification for V2xM.

4 Constraints and assumptions

4.1 Limitations

No limitations.

4.2 Applicability to car domains

This specification is applicable to all car domains.

4.3 Authorisation Tickets and Pseudonyms

The Authorisation Ticket (AT) is referred to as Pseudonym in this document.

5 Dependencies to other modules

This section describes the relations of the V2xM module to other modules within the AUTOSAR basic software architecture. It outlines the modules that are required or optional for the realization of the V2xM module and the V2xM services that these modules use.

5.1 AUTOSAR DET (Default Error Tracer)

In development mode, the V2xM module reports errors through the `Det_ReportError` function of the DET Module [12].

5.2 AUTOSAR EcuM (Ecu State Manager)

The EcuM [13] initializes the V2xM module.

5.3 AUTOSAR CSM (Cryptographic Service Manager)

The CSM module is used for cryptographic calculations, needed by the V2X-Stack to secure packets. Therefore, sign and verify and other services of the CSM are being used.

5.4 AUTOSAR NvM (NVRAMManager)

The NvM [14] is used by V2xM to load certificates used for pseudonyms, signature generation and verification of V2X messages. Furthermore, the last ignition-time (startup-time of the v2x stack) is stored and loaded by NvM.

5.5 AUTOSAR Math libraries (Mfl, Efx)

For mathematical calculations, the Mfl or the Efx library is needed.

5.6 File structure

5.6.1 Code file structure

For details refer to the chapter 5.1.6 "Code file structure" in "General Specification of Basic Software Modules" [11].

6 Requirements Tracing

The following tables reference the requirements specified in [15] and [16] and links to the fulfillment of these. Please note that if column “Satisfied by” is empty for a specific requirement this means that this requirement is not fulfilled by this document.

Note:

Requirement IDs within this document have an encoding to state where each requirement has its origin:

- SWS items starting with a leading 0 (SWS_V2xM_0xxxx) are module specific and not inherited.
- SWS items starting with a leading 2 (SWS_V2xM_2xxxx) are inherited from C2C-CC Basic System Profile

Requirement	Description	Satisfied by
[SRS_BSW_00345]	BSW Modules shall support pre-compile configuration	[SWS_V2xM_00191]
[SRS_BSW_00414]	Init functions shall have a pointer to a configuration structure as single parameter	[SWS_V2xM_00118]
[SRS_BSW_00457]	Callback functions of Application software components shall be invoked by the Basis SW	[SWS_V2xM_00163]
[SRS_V2X_00010]	The implementation of the V2X system shall follow additional guidance given by C2C-CC requirements	[SWS_V2xM_20182] [SWS_V2xM_20183] [SWS_V2xM_20191] [SWS_V2xM_20192]
[SRS_V2X_00163]	The "verification" of a message shall comprise at least cryptographic verification of the message's signature	[SWS_V2xM_00130] [SWS_V2xM_00199] [SWS_V2xM_20170]
[SRS_V2X_00174]	The V2X system shall support key origin authentication for the new (long-term or pseudonym) public keys that are provided in certificate signing requests	[SWS_V2xM_00199] [SWS_V2xM_00200] [SWS_V2xM_20180] [SWS_V2xM_20411]
[SRS_V2X_00176]	The V2X system shall change pseudonyms	[SWS_V2xM_00201]
[SRS_V2X_00184]	The V2X system shall allow applications to block the pseudonym change	[SWS_V2xM_00005] [SWS_V2xM_00099]
[SRS_V2X_00190]	The V2X system shall handle vehicle states in a consistent manner	[SWS_V2xM_00095]
[SRS_V2X_00193]	The V2X system shall use ITS time as time base	[SWS_V2xM_00126]
[SRS_V2X_00279]	The V2X system shall support circular, rectangular and ellipsoidal geographical areas	[SWS_V2xM_00113]
[SRS_V2X_00280]	The V2X system shall use high-accuracy methods to calculate the distance between two coordinates	[SWS_V2xM_00176] [SWS_V2xM_00177]





Requirement	Description	Satisfied by
[SRS_V2X_00322]	The V2X system shall provide services to avoid channel congestion of the shared media	[SWS_V2xM_00188] [SWS_V2xM_00189] [SWS_V2xM_20238] [SWS_V2xM_20240]
[SRS_V2X_00406]	The end-to-end security envelope shall be generated depending on the message type	[SWS_V2xM_00038] [SWS_V2xM_00074] [SWS_V2xM_00135]
[SRS_V2X_00407]	The signature in the end-to-end security envelope shall be generated using a private key corresponding to a valid authorization ticket (pseudonym certificate)	[SWS_V2xM_00074] [SWS_V2xM_00135]
[SRS_V2X_00412]	The V2X system shall inform the driver about the expiration of the pseudonym certificates	[SWS_V2xM_00095]
[SRS_V2X_00413]	The V2X system shall inform the driver about the expiration of the Long Term Certificates	[SWS_V2xM_00095]
[SRS_V2X_00531]	The V2X system's Networking Layer shall support addressing based on geographic coordinates	[SWS_V2xM_00035]
[SRS_V2X_00711]	The V2X system's CA basic service shall be compliant to ETSI Specification of Cooperative Awareness Basic Service	[SWS_V2xM_20293]
[SRS_V2X_10101]	The V2X system shall follow the recommendations of European Certificate Policy and of European Security Policy	[SWS_V2xM_20177] [SWS_V2xM_20179] [SWS_V2xM_20402] [SWS_V2xM_20409]

Table 6.1: Requirements Tracing

7 Functional specification

7.1 Startup behavior

[SWS_V2xM_00001] [The function `V2xM_Init()` of the V2xM shall initialize the internal states of the V2xM module.]

[SWS_V2xM_00196] [The function `V2xM_Init()` of the V2xM shall initialize the underlying MCAL/ECUAL modules WEth and WEthTrcv with a call to `EthIf_SetControllerMode` with the respective configured `EthIfController V2xMEthIfCtrlRef.`]

[SWS_V2xM_00197] [The Ethernet State Manager (EthSm) shall not be involved in the startup of the wireless communication stack.]

Note: See [Figure 9.5](#) for the initialization of the wireless communication stack MCAL/ECUAL modules.

7.2 Shutdown behavior

[SWS_V2xM_00198] [The Wireless Communication is active until the ECU hardware is being shut down or reset. There are no means to stop the Vehicle-2-X wireless communication in advance.]

7.3 Identity management

[SWS_V2xM_00004] [The V2xM module shall implement the identity management, also known as the pseudonym. Specific V2X modules shall be notified with the current identity to ensure a consistent value is used in each layer of the V2X Stack.]

[SWS_V2xM_20182]

Upstream requirements: [SRS_V2X_00010](#)

[The V2xM module shall change all addresses and identifiers of other layers transmitted over the wireless communication media (such as StationId in CAM/DENM, GeoNetworking Source Address, MAC Source Address) when the used pseudonym changes. Those changes are necessary to ensure the privacy of the user.]

Note: In V2xFac, the identity is represented in the Station Id, in V2xGn the identity is represented in the GeoNetworking address, in the Wireless Ethernet Driver the identity is represented in the MAC address.

[SWS_V2xM_20183]

Upstream requirements: [SRS_V2X_00010](#)

[All identifiers according to [\[SWS_V2xM_20182\]](#) (MAC Source Address, StationId in CAM/DENM, GN Source Address) shall be derived from the "Certificate digest" / "hashedId8". The required number of least significant bytes of the "Certificate digest" / "hashedId8" shall be used as respective identifier.]

[SWS_V2xM_00005]

Upstream requirements: [SRS_V2X_00184](#)

[The V2xM module shall provide a mechanism to permit V2X modules to inhibit the identity change for a duration of maximum 15 minutes (e.g. during DENM event) via an API call to [V2xM_LockPseudonymChange \(\)](#) .]

[SWS_V2xM_00099]

Upstream requirements: [SRS_V2X_00184](#)

[The V2xM shall not inhibit an identity change when the pseudonym identity expires (i.e. when the certificate that provides the current pseudonym expires within the period where the identity change inhibit was requested).]

[SWS_V2xM_00006] [The function [V2xM_Init](#) shall initialize the identity management and provide an initial identity to the V2X protocol stack modules.]

[SWS_V2xM_00201]

Upstream requirements: [SRS_V2X_00176](#)

[The V2xM identity management shall initiate a first change of pseudonym during the trip randomly in a range of 800 to 1500 meters from the start position.

The second pseudonym change shall be performed at least 800 m from the last pseudonym change and randomly within an additional interval of 2 to 6 minutes.

The third pseudonym change shall be performed after 15 kilometers \pm 5 kilometers (randomly)

Further pseudonym changes shall be performed every further 30 kilometers \pm 5 kilometers (randomly)]

[SWS_V2xM_20180]

Upstream requirements: [SRS_V2X_00174](#)

[V2xM shall use the pseudonym validity periods as defined by the Authorisation Authority (AA) in conformance to the rules of the Root Certification Authority (RCA).]

[SWS_V2xM_20411]

Upstream requirements: [SRS_V2X_00174](#)

[In case that an V2xM module has no valid pseudonym certificates for signing messages, it shall stop transmitting messages that use the security profiles specified in [17], clause 7.1.1, clause 7.1.2, and clause 7.1.3.]

[SWS_V2xM_00008] [The `V2xM_MainFunction()` shall be used to initiate a change of the identity.]

Note: The `V2xM_MainFunction()` can also be used for software implementation specific execution of cyclic tasks.

[SWS_V2xM_00100] [The V2xM shall initiate a change of the pseudonym within two phases. A first prepare phase and a second commit or abort phase. The second phase depends on the result of all called modules within the first phase. If the first phase was successful, the commit phase shall be initiated, if the first phase was unsuccessful, the abort phase shall be initiated.]

[SWS_V2xM_00101] [In the prepare phase, the desired API `<Module>_PreparePseudonymChange()` shall be called.]

[SWS_V2xM_00102] [In the commit phase, the desired API `<Module>_CommitPseudonymChange()` shall be called.]

[SWS_V2xM_00103] [In the abort phase, the desired API `<Module>_AbortPseudonymChange()` shall be called.]

[SWS_V2xM_00104] [The modules that shall be notified with the two phase pseudonym change by V2xM are V2xGn and V2xFac.]

[SWS_V2xM_00105] [The EthernetInterface and the Wireless Ethernet Driver do not support a two phase id change. Within the commit phase of the two phase pseudonym change, the API `EthIf_SetPhysAddr` shall be called to initiate the pseudonym change within the Wireless Ethernet Driver.]

[SWS_V2xM_00200]

Upstream requirements: [SRS_V2X_00174](#)

[The maximum amount of pseudonyms per week shall be 100.]

[SWS_V2xM_20177]

Upstream requirements: [SRS_V2X_10101](#)

[The pseudonym used by the V2xM module shall change every time when the vehicle's ignition is switched on except if the system gets restarted within a period of 10 minutes, the pseudonym shall not be changed.]

[SWS_V2xM_20409]

Upstream requirements: [SRS_V2X_10101](#)

[The pseudonym change after turning on ignition shall be performed within a grace period of 1 minute.]

[SWS_V2xM_20179]

Upstream requirements: [SRS_V2X_10101](#)

[Pseudonyms may be reused within their validity period.]

[SWS_V2xM_20402]

Upstream requirements: [SRS_V2X_10101](#)

[The pseudonym validity periods shall not be longer than one week + overlapping period.]

7.4 Security

[SWS_V2xM_00009] [The V2xM module shall provide the Encap and Decap services required by V2xGn and Verification On Demand (VOD) by utilizing CSM.]

[SWS_V2xM_00175] [The V2xM shall disable CAM generation in case of unusable position (e.g. due to no position available, degenerated dead reckoning, time jitter/drift). This is done via a call to V2xFac_V2xM_SetCaBsOperation().]

[SWS_V2xM_20170]

Upstream requirements: [SRS_V2X_00163](#)

[The V2xM module shall use for sending messages digital signatures and certificates based on ECDSA that is specified in IEEE 1609.2 as mentioned in [17].]

Note: Additionally, [18] requires implementation of the elliptic curve brainpool P256r1 to sign messages.

[SWS_V2xM_00199]

Upstream requirements: [SRS_V2X_00163](#), [SRS_V2X_00174](#)

[The V2xM module shall support key origin authentication via the creation of a signature over internally generated public key(s), where public keys for Enrolment Certificates shall be signed with the module private key and public keys for Pseudonym Certificates shall be signed with a previously registered Enrolment Certificates private key.]

Note: The "module private key" is a vehicle specific unique private key that could be generated randomly inside the HSM when the ECU is initialized in the first place

[SWS_V2xM_00135]

Upstream requirements: [SRS_V2X_00406](#), [SRS_V2X_00407](#)

[The function `V2xM_V2xGn_ReqEncap()` shall encapsulate the payload of the GeoNetworking packet to be sent as defined in [19] and [17].]

[SWS_V2xM_00136] [The function `V2xM_V2xGn_ReqDecap()` shall decapsulate the payload of a received GeoNetworking packet as defined in [19] and [17].]

[SWS_V2xM_00130]

Upstream requirements: [SRS_V2X_00163](#)

[The function `V2xM_V2xGn_ReqDecap()` shall invoke CSM APIs for the verification of the data given by `SecuredDataPtr`.]

7.5 Position and Time

[SWS_V2xM_20191]

Upstream requirements: [SRS_V2X_00010](#)

[WGS 84 shall be used as the reference coordinate system as defined in [20].

Altitude information shall be interpreted as height above WGS84 Ellipsoid.]

[SWS_V2xM_20192]

Upstream requirements: [SRS_V2X_00010](#)

[Heading shall be interpreted as the direction of the horizontal velocity vector. The starting point of the velocity vector shall be the ITS Vehicle Reference Point as defined in CAM specification [21] B.19]

[SWS_V2xM_00121] [The function `V2xM_GetPositionAndTime()` shall provide the currently known position and time information.]

[SWS_V2xM_00126]

Upstream requirements: [SRS_V2X_00193](#)

[The function `V2xM_GetRefTimePtr()` shall provide an address pointer to 32 bit data containing the current V2X Time, i.e. the TAI milliseconds from 2004-01-01 00:00:00.000 modulo 2^{32} .]

[SWS_V2xM_00177]

Upstream requirements: [SRS_V2X_00280](#)

[The function `V2xM_CalcDistance()` shall calculate the distance between two geographical points.]

[SWS_V2xM_00179] [The function `V2xM_CalcHeadingInTolerance()` shall calculate if the difference of two heading values are within a given tolerance value.]

7.6 DCC Management

[SWS_V2xM_20240]

Upstream requirements: [SRS_V2X_00322](#)

[The V2xM module shall use the following smoothing function of channel busy ratio (CBR) values:

$$CBR_{new} = (CBR(n) + CBR(n-1)) / 2$$

Where 'n' and 'n-1' are respectively the current and previous CBR sampling period as defined in [22], and with CBR() function as also defined in [22].]

[SWS_V2xM_20238]

Upstream requirements: [SRS_V2X_00322](#)

[

State	CBR	Packet rate (R)	T _{off}
Relaxed	< 30 %	20 Hz	50 ms
Active_1	30 % to 39 %	10 Hz	100 ms
Active_2	40 % to 49 %	5 Hz	200 ms
Active_3	50 % to 65 %	4 Hz	250 ms
Restricted	> 65 %	1 Hz	1000 ms

The V2xM module shall use the reactive DCC algorithm outlined in Clause 5.3 of [19]. The table corresponds to Table A.2 in [19] with an average T_{on} of 500 μs.

]

[SWS_V2xM_20293]

Upstream requirements: [SRS_V2X_00711](#)

[The parameter T_GenCam_Dcc (see [21]) shall be set to the value of the minimum time between two transmissions, T_{off}, as given by the DCC Mechanism (see [SWS_V2xM_20238], and pushed to the V2xFac module via the V2xFac_V2xM_SetTGenCamDcc() API.]

[SWS_V2xM_00188]

Upstream requirements: [SRS_V2X_00322](#)

[The current state (restrictive, active sub-state, relaxed, see [SWS_V2xM_20238]) shall be set periodically to the WEthTrcv Module to allow message bursts within the relaxed state.]

[SWS_V2xM_00189]

Upstream requirements: [SRS_V2X_00322](#)

[The current transmission interval (see [SWS_V2xM_20238]) shall be set periodically to the WEthTrcv Module to allow triggering of transmit queues.]

7.7 Error Classification

Section "Error Handling" of the document [11] "General Specification of Basic Software Modules" describes the error handling of the Basic Software in detail. Above all, it constitutes a classification scheme consisting of five error types which may occur in BSW modules.

Based on this foundation, the following section specifies particular errors arranged in the respective subsections below.

7.7.1 Development Errors

[SWS_V2xM_00031] Definiton of development errors in module V2xM [

<i>Type of error</i>	<i>Related error code</i>	<i>Error value</i>
API service called with wrong parameter	V2XM_E_PARAM	0x01
API service called with invalid pointer	V2XM_E_PARAM_POINTER	0x02
V2xM initialization failed	V2XM_E_INIT_FAILED	0x03
API function called before the V2xM module has been fully initialized	V2XM_E_UNINIT	0x04

]

7.7.2 Runtime Errors

There are no runtime errors.

7.7.3 Production Errors

There are no production errors.

7.7.4 Extended Production Errors

There are no extended production errors.

7.8 Security Events

The module does not report security events.

8 API specification

8.1 Imported types

In this chapter all types included from the following files are listed.

[SWS_V2xM_00033] Definition of imported datatypes of module V2xM [

<i>Module</i>	<i>Header File</i>	<i>Imported Type</i>
Csm	Rte_Csm_Type.h	Crypto_OperationModeType
	Rte_Csm_Type.h	Crypto_VerifyResultType
Gpt	Gpt.h	Gpt_ChannelType
	Gpt.h	Gpt_PredefTimerType
	Gpt.h	Gpt_ValueType
NvM	Rte_NvM_Type.h	NvM_BlockIdType
	Rte_NvM_Type.h	NvM_RequestResultType
StbM	Rte_StbM_Type.h	StbM_SynchronizedTimeBaseType
	Rte_StbM_Type.h	StbM_TimeBaseStatusType
	Rte_StbM_Type.h	StbM_TimeStampType
	Rte_StbM_Type.h	StbM_TimeTupleType
	Rte_StbM_Type.h	StbM_UserDataType
	StbM.h	StbM_VirtualLocalTimeType
Std	Std_Types.h	Std_ReturnType
	Std_Types.h	Std_VersionInfoType
V2x_GeneralTypes	Rte_V2xM_Type.h	V2xM_PositionAndTimeType
	V2x_GeneralTypes.h	V2x_ChanType
	V2x_GeneralTypes.h	V2x_PseudonymType
	V2x_GeneralTypes.h	V2x_SecProfileType
	V2x_GeneralTypes.h	V2x_SecReportType
	V2x_GeneralTypes.h	V2x_SecReturnType
WEthTrcv	WEth_GeneralTypes.h	WEthTrcv_BandwidthType
	WEth_GeneralTypes.h	WEthTrcv_GetChanRxParamIdType
	WEth_GeneralTypes.h	WEthTrcv_RadioModeType
	WEth_GeneralTypes.h	WEthTrcv_RssiType
	WEth_GeneralTypes.h	WEthTrcv_SetChanRxParamIdType
	WEth_GeneralTypes.h	WEthTrcv_SetChanTxParamIdType
	WEth_GeneralTypes.h	WEthTrcv_SetRadioParamIdType
	WEth_GeneralTypes.h	WEthTrcv_TxPwrLvlType

]

8.2 Type definitions

[SWS_V2xM_00107] [V2xM.h shall include V2x_GeneralTypes.h for the inclusion of general V2X type declarations.]

8.2.1 V2xM_ConfigType

[SWS_V2xM_00110] Definition of datatype V2xM_ConfigType [

Name	V2xM_ConfigType		
Kind	Structure		
Elements	implementation specific		
	Type	–	
	Comment	The content of the configuration data structure is implementation specific.	
Description	Configuration data structure of the V2xM module.		
Available via	V2xM.h		

]

8.2.2 V2x_GnPacketTransportType

[SWS_V2xM_00034] Definition of datatype V2x_GnPacketTransportType [

Name	V2x_GnPacketTransportType		
Kind	Enumeration		
Range	V2X_GN_GEOUNICAST	0x00	–
	V2X_GN_GEOANYCAST	0x01	–
	V2X_GN_GEOBROADCAST	0x02	–
	V2X_GN_TSB	0x03	–
	V2X_GN_SHB	0x04	–
Description	Specifies the packet transport type for GeoNetworking packages. This is passed e.g. via V2xFac and V2xBtp for the transmit path.		
Available via	V2x_GeneralTypes.h		

]

8.2.3 V2x_GnDestinationType

[SWS_V2xM_00112] Definition of datatype V2x_GnDestinationType [

Name	V2x_GnDestinationType		
Kind	Enumeration		
Range	V2X_GN_DESTINATION_ADDRESS	0x00	–
	V2X_GN_DESTINATION_AREA	0x01	–
Description	Specifies the destination type for GeoNetworking packages. This is passed e.g. via V2xFac and V2xBtp for the transmit path.		
Available via	V2x_GeneralTypes.h		

]

8.2.4 V2x_GnAddressType

[SWS_V2xM_00035] Definition of datatype V2x_GnAddressType

Upstream requirements: [SRS_V2X_00531](#)

[

Name	V2x_GnAddressType		
Kind	Type		
Derived from	uint64		
Description	The GeoNetworking address.		
Available via	V2x_GeneralTypes.h		

]

8.2.5 V2x_GnAreaShapeType

[SWS_V2xM_00113] Definition of datatype V2x_GnAreaShapeType

Upstream requirements: [SRS_V2X_00279](#)

[

Name	V2x_GnAreaShapeType		
Kind	Enumeration		
Range	V2X_GN_SHAPE_CIRCLE	0x00	–
	V2X_GN_SHAPE_RECT	0x01	–

▽

△

	V2X_GN_SHAPE_ELLIPSE	0x02	–
Description	Specifies the shape type for GeoNetworking Areas.		
Available via	V2x_GeneralTypes.h		

]

8.2.6 V2x_GnDestinationAreaType

[SWS_V2xM_00036] Definition of datatype V2x_GnDestinationAreaType [

Name	V2x_GnDestinationAreaType		
Kind	Structure		
Elements	latitude		
	Type	sint32	
	Comment	Latitude [1/10 microdegree]	
	longitude		
	Type	sint32	
	Comment	Longitude [1/10 microdegree]	
	distanceA		
	Type	uint16	
	Comment	Distance a of the geometric shape [meters]	
	distanceB		
	Type	uint16	
	Comment	Distance b of the geometric shape [meters]	
	angle		
	Type	uint16	
	Comment	Angle of the geometric shape [degrees from North]	
	shape		
Type	V2x_GnAreaShapeType		
Comment	Shape type of the geometric area		
Description	Definition of the GeoNetworking destination area		
Available via	V2x_GeneralTypes.h		

]

8.2.7 V2x_GnTxResultType

[SWS_V2xM_00114] Definition of datatype V2x_GnTxResultType [

Name	V2x_GnTxResultType		
Kind	Enumeration		
Range	V2X_GNTX_ACCEPTED	–	GeoNetworking transmit has been accepted
	V2X_GNTX_E_MAXSDUSIZEOVFL	–	GeoNetworking transmit has been rejected due to maximum length exceedance
	V2X_GNTX_E_MAXPACKETLIFETIME	–	GeoNetworking transmit has been rejected due to maximum lifetime exceedance
	V2X_GNTX_E_TCID	–	GeoNetworking transmit has been rejected due to unsupported Traffic Class ID
	V2X_GNTX_E_MAXGEOAREASIZE	–	GeoNetworking transmit has been rejected due to GeoArea exceeds max size
	V2X_GNTX_E_UNSPECIFIED	–	GeoNetworking transmit has been rejected due to unspecified reasons
Description	The result code used to specify if a V2xGn_Transmit has been processed successfully.		
Available via	V2x_GeneralTypes.h		

]

8.2.8 V2x_SecProfileType

[SWS_V2xM_00038] Definition of datatype V2x_SecProfileType

Upstream requirements: [SRS_V2X_00406](#)

[

Name	V2x_SecProfileType		
Kind	Enumeration		
Range	V2X_SECPROF_CAM	–	Cam Security Profile
	V2X_SECPROF_DENM	–	Denm Security Profile
	V2X_SECPROF_OTHER_SIGNED	–	Security Profile for other message types that have to be signed
	V2X_SECPROF_OTHER_SIGNED_EXTERNAL	–	Security Profile for other message types that are signed externally
	V2X_SECPROF_OTHER_SIGNED_ENCRYPTED	–	Security Profile for other message types that have to be signed and encrypted
Description	Used to describe the security service invoked by V2xM		
Available via	V2x_GeneralTypes.h		

]

8.2.9 V2x_SecReturnType

[SWS_V2xM_00115] Definition of datatype V2x_SecReturnType [

Name	V2x_SecReturnType		
Kind	Enumeration		
Range	V2X_E_OK	–	Return with success
	V2X_E_NOT_OK	–	Failure during operation
	V2X_E_UNVERIFIEDED	–	Message has not been verified. Used for VoD
	V2X_E_BUF_OVFL	–	Destination buffer too small for security operation data output
Description	Used for return values of security related functions		
Available via	V2x_GeneralTypes.h		

]

8.2.10 V2x_MaximumPacketLifetimeType

[SWS_V2xM_00039] Definition of datatype V2x_MaximumPacketLifetimeType [

Name	V2x_MaximumPacketLifetimeType		
Kind	Type		
Derived from	uint16		
Range	0..6300	–	Valid values
	6301..uint16 Max Value	–	Invalid
Description	Specifies the maximum tolerable time (in seconds) a GeoNetworking packet can be buffered.		
Available via	V2x_GeneralTypes.h		

]

8.2.11 V2x_TrafficClassIdType

[SWS_V2xM_00043] Definition of datatype V2x_TrafficClassIdType [

Name	V2x_TrafficClassIdType		
Kind	Type		
Derived from	uint8		
Range	0..63	–	Valid values
	64..uint8 Max Value	–	Invalid
Description	Requirements on packet transport coming from ITS Facilities layer		



△

Available via	V2x_GeneralTypes.h
----------------------	--------------------

]

8.2.12 V2x_ChanType

[SWS_V2xM_00044] Definition of datatype V2x_ChanType [

Name	V2x_ChanType		
Kind	Enumeration		
Range	V2X_SCH4	172	Service channel 4
	V2X_SCH3	174	Service channel 3
	V2X_SCH1	176	Service channel 1
	V2X_SCH2	178	Service channel 2
	V2X_CCH	180	Control channel
Description	Specifies the channel type to use. Channels from ITS-G5A and ITS-G5B are used. Values matching IEEE 802.11-2012 channel numbers.		
Available via	V2x_GeneralTypes.h		

]

8.2.13 V2x_GnUpperProtocolType

[SWS_V2xM_00045] Definition of datatype V2x_GnUpperProtocolType [

Name	V2x_GnUpperProtocolType		
Kind	Enumeration		
Range	V2X_ANY	–	Unspecified
	V2X_BTPA	–	Transport protocol: BTP-A (for interactive packet transport).
	V2X_BTPB	–	Transport protocol: BTP-B (for non-interactive packet transport).
	V2X_IPV6	–	IPv6 header
Description	Specifies the GeoNetworking payload.		
Available via	V2x_GeneralTypes.h		

]

8.2.14 V2x_GnLongPositionVectorType

[SWS_V2xM_00046] Definition of datatype V2x_GnLongPositionVectorType [

Name	V2x_GnLongPositionVectorType	
Kind	Structure	
Elements	gnAddress	
	Type	V2x_GnAddressType
	Comment	GeoNetworking Address
	timestamp	
	Type	uint32
	Comment	Timestamp [ms]
	latitude	
	Type	sint32
	Comment	Latitude [1/10 microdegree]
	longitude	
	Type	sint32
	Comment	Longitude [1/10 microdegree]
	pai	
	Type	boolean
	Comment	Positional accuracy indicator
	speed	
Type	sint16	
Comment	Speed [1/100 m/s]	
heading		
Type	uint16	
Comment	Heading [1/10 degrees]	
Description	Position-related information as defined within [25] chapter 9.5.2.	
Available via	V2x_GeneralTypes.h	

]

8.2.15 V2x_PseudonymType

[SWS_V2xM_00057] Definition of datatype V2x_PseudonymType [

Name	V2x_PseudonymType
Kind	Type
Derived from	uint64
Description	Pseudonym, derived from Pseudonym Certificates. The pseudonym is distributed to different modules to support privacy within the V2X System to the outside world.
Available via	V2x_GeneralTypes.h

]

8.2.16 V2x_SecReportType

[SWS_V2xM_00174] Definition of datatype V2x_SecReportType [

Name	V2x_SecReportType		
Kind	Type		
Derived from	uint8		
Range	V2X_SECREP_SUCCESS	0x00	Indicating security service has successfully executed
	V2X_SECREP_FALSE_SIGNATURE	0x01	Indicating false signature
	V2X_SECREP_INVALID_CERTIFICATE	0x02	Indicating invalid certificate
	V2X_SECREP_REVOKED_CERTIFICATE	0x03	Indicating revoked certificate
	V2X_SECREP_INCONSISTENT_CHAIN	0x04	Indicating inconsistent certificate chain
	V2X_SECREP_INVALID_TIMESTAMP	0x05	Indicating invalid timestamp
	V2X_SECREP_DUPLICATE_MESSAGE	0x06	Indicating duplicate message
	V2X_SECREP_INVALID_MOBILITY_DATA	0x07	Indicating invalid mobility data
	V2X_SECREP_UNSIGNED_MESSAGE	0x08	Indicating unsigned message
	V2X_SECREP_SIGNER_CERTIFICATE_NOT_FOUND	0x09	Indicating signer certificate not found
	V2X_SECREP_UNSUPPORTED_SIGNER_IDENTIFIER_TYPE	0x0a	Indicating unsupported signer identifier type
	V2X_SECREP_INCOMPATIBLE_PROTOCOL	0x0b	Indicating incompatible protocol
	V2X_SECREP_UNENCRYPTED_MESSAGE	0x0c	Indicating unencrypted message
	V2X_SECREP_DECRYPTION_ERROR	0x0d	Indicating decryption error
V2X_SECREP_NONE	0xff	Indicating no security service has been executed.	
Description	Used to describe the security report after invocation of security services for Decapsulation (verify or decrypt)		
Available via	V2x_GeneralTypes.h		

]

8.3 Function definitions

This is a list of functions provided for upper layer modules and other V2X stack modules.

8.3.1 V2xM_Init

[SWS_V2xM_00070] Definition of API function V2xM_Init [

Service Name	V2xM_Init	
Syntax	<pre>void V2xM_Init (const void * CfgPtr)</pre>	
Service ID [hex]	0x01	
Sync/Async	Synchronous	
Reentrancy	Non Reentrant	
Parameters (in)	CfgPtr	ConfigPtr Pointer to the selected configuration set.
Parameters (inout)	None	
Parameters (out)	None	
Return value	None	
Description	Initializes the V2xM module.	
Available via	V2xM.h	

]

[SWS_V2xM_00116] [The function shall store the access to the configuration structure for subsequent API calls.]

[SWS_V2xM_00118]

Upstream requirements: [SRS_BSW_00414](#)

[The Configuration pointer [CfgPtr](#) shall always have a NULL_PTR value]

8.3.2 V2xM_GetVersionInfo

[SWS_V2xM_00071] Definition of API function V2xM_GetVersionInfo [

Service Name	V2xM_GetVersionInfo	
Syntax	<pre>void V2xM_GetVersionInfo (Std_VersionInfoType* VersionInfoPtr)</pre>	
Service ID [hex]	0x02	
Sync/Async	Synchronous	
Reentrancy	Reentrant	
Parameters (in)	VersionInfoPtr	Pointer to store the version information of this module.
Parameters (inout)	None	
Parameters (out)	None	
Return value	None	
Description	Provides the version information of this module.	





Available via	V2xM.h
----------------------	--------

]

[SWS_V2xM_00120] [If development error detection is enabled: the function shall check the parameter `VersionInfoPtr` for being valid. If the check fails, the function shall raise the development error `V2XM_E_PARAM_POINTER`.]

8.3.3 V2xM_GetPositionAndTime

[SWS_V2xM_00072] Definition of API function `V2xM_GetPositionAndTime` [

Service Name	V2xM_GetPositionAndTime	
Syntax	Std_ReturnType V2xM_GetPositionAndTime (<code>V2xM_PositionAndTimeType*</code> Poti)	
Service ID [hex]	0x03	
Sync/Async	Synchronous	
Reentrancy	Reentrant	
Parameters (in)	None	
Parameters (inout)	None	
Parameters (out)	Poti	Current position and time information including positional error information.
Return value	Std_ReturnType	E_OK: request successful E_NOT_OK: Time and/or position not available.
Description	Provides the instantaneous position information.	
Available via	V2xM.h	

]

[SWS_V2xM_00122] [If development error detection is enabled: the function shall check that the service `V2xM_Init()` was previously called. If the check fails, the function shall raise the development error `V2XM_E_UNINIT`.]

[SWS_V2xM_00123] [If development error detection is enabled: the function shall check the parameter `Poti` for being valid. If the check fails, the function shall raise the development error `V2XM_E_PARAM_POINTER`.]

8.3.4 V2xM_GetRefTimePtr

[SWS_V2xM_00125] Definition of API function V2xM_GetRefTimePtr [

Service Name	V2xM_GetRefTimePtr	
Syntax	<pre>Std_ReturnType V2xM_GetRefTimePtr (const uint32** RefTimePtr)</pre>	
Service ID [hex]	0x04	
Sync/Async	Synchronous	
Reentrancy	Non Reentrant	
Parameters (in)	None	
Parameters (inout)	None	
Parameters (out)	RefTimePtr	Pointer to the current time information.
Return value	Std_ReturnType	E_OK: request successful E_NOT_OK: request failed
Description	Provides a pointer to the time reference of the V2X-Stack.	
Available via	V2xM.h	

]

[SWS_V2xM_00127] [If development error detection is enabled: the function shall check that the service `V2xM_Init()` was previously called. If the check fails, the function shall raise the development error `V2XM_E_UNINIT`.]

[SWS_V2xM_00128] [If development error detection is enabled: the function shall check the parameter `RefTimePtr` for being valid. If the check fails, the function shall raise the development error `V2XM_E_PARAM_POINTER`.]

8.3.5 V2xM_V2xGn_ReqEncap

[SWS_V2xM_00074] Definition of API function V2xM_V2xGn_ReqEncap

Upstream requirements: [SRS_V2X_00406](#), [SRS_V2X_00407](#)

[

Service Name	V2xM_V2xGn_ReqEncap	
Syntax	<pre>V2x_SecReturnType V2xM_V2xGn_ReqEncap (uint16 EncapReqId, V2x_SecProfileType SecProfile, uint16 UnsecuredDataLength, const uint8* UnsecuredDataPtr, uint16* SecuredDataLength, uint8* SecuredDataPtr)</pre>	





Service ID [hex]	0x06	
Sync/Async	Asynchronous	
Reentrancy	Non Reentrant	
Parameters (in)	EncapReqId	Unique Id of the packet to be encapsulated with the signature of the transmitting ITS station
	SecProfile	The security profile to use for encapsulation
	UnsecuredDataLength	The length of the data to use for encapsulation
	UnsecuredDataPtr	The pointer to the data to use for encapsulation
Parameters (inout)	SecuredDataLength	The length pointer containing the maximum length of secured data SecuredDataPtr at input direction. Shall contain the actual size of the secured data SecuredDataPtr at output direction.
	SecuredDataPtr	The pointer where the secured data shall be put.
Parameters (out)	None	
Return value	V2x_SecReturnType	V2X_E_OK: request successful V2X_E_NOT_OK: request failed V2X_E_BUF_OVFL: SecuredDataLength is too small for security operation result data
Description	This function is called by the V2xGn to sign and/or encrypt a message. An asynchronous V2xGn_V2xM_EncapConfirmation call will be used to notify V2xGn of the result.	
Available via	V2xM_V2xGn.h	

]

[SWS_V2xM_00131] [If development error detection is enabled: the function shall check that the service `V2xM_Init()` was previously called. If the check fails, the function shall raise the development error `V2XM_E_UNINIT` otherwise (if DET is disabled) return `V2X_E_NOT_OK`.]

[SWS_V2xM_00132] [If development error detection is enabled: the function shall check the parameter `UnsecuredDataPtr` for being valid. If the check fails, the function shall raise the development error `V2XM_E_PARAM_POINTER` otherwise (if DET is disabled) return `V2X_E_NOT_OK`.]

[SWS_V2xM_00133] [If development error detection is enabled: the function shall check the parameter `SecuredDataLength` for being valid. If the check fails, the function shall raise the development error `V2XM_E_PARAM_POINTER` otherwise (if DET is disabled) return `V2X_E_NOT_OK`.]

[SWS_V2xM_00134] [If development error detection is enabled: the function shall check the parameter `SecuredDataPtr` for being valid. If the check fails, the function shall raise the development error `V2XM_E_PARAM_POINTER` otherwise (if DET is disabled) return `V2X_E_NOT_OK`.]

8.3.6 V2xM_V2xGn_ReqDecap

[SWS_V2xM_00075] Definition of API function V2xM_V2xGn_ReqDecap [

Service Name	V2xM_V2xGn_ReqDecap	
Syntax	<pre> V2x_SecReturnType V2xM_V2xGn_ReqDecap (uint32 DecapReqId, uint16 SecuredDataLength, const uint8* SecuredDataPtr, uint16* UnsecuredDataLength, uint8* UnsecuredDataPtr, V2x_SecReportType* SecReport, uint64* CertificateId, uint32* ItsAid, uint8* SspLength, uint8* SspBits) </pre>	
Service ID [hex]	0x07	
Sync/Async	Asynchronous	
Reentrancy	Non Reentrant	
Parameters (in)	DecapReqId	Unique Id of the packet to be decapsulated
	SecuredDataLength	The length of the data to decrypt and verify
	SecuredDataPtr	The pointer to the data to decrypt and verify
Parameters (inout)	UnsecuredDataLength	The pointer to the data length of the unsecured data. Shall contain the maximum available length (incoming direction) and the actual used length (outgoing direction)
	UnsecuredDataPtr	The pointer where the decrypted /verified data shall be put
	SecReport	The security report.
	CertificateId	The identification of the used for verification (by certificate hash)
	ItsAid	The numerical value of the ITS-AID
	SspLength	The length (in octets, up to 31) of the SSP bits
	SspBits	The SSP bits
Parameters (out)	None	
Return value	V2x_SecReturnType	V2X_E_OK: request successful V2X_E_NOT_OK: request failed V2X_E_UNVERIFIED: VOD is being used V2X_E_BUF_OVFL: UnsecuredDataLength is too small for security operation result data
Description	This function is called by the V2xGn to decrypt and verify a message. An asynchronous V2xGn_V2xM_DecapConfirmation call will be used to notify V2xGn of the result.	
Available via	V2xM_V2xGn.h	

]

[SWS_V2xM_00137] [If development error detection is enabled: the function shall check that the service `V2xM_Init()` was previously called. If the check fails, the function shall raise the development error `V2XM_E_UNINIT` otherwise (if DET is disabled) return `V2X_E_NOT_OK`.]

[SWS_V2xM_00138] [If development error detection is enabled: the function shall check the parameter `SecuredDataPtr` for being valid. If the check fails, the func-

tion shall raise the development error `V2XM_E_PARAM_POINTER` otherwise (if DET is disabled) return `V2X_E_NOT_OK`.]

[SWS_V2xM_00139] [If development error detection is enabled: the function shall check the parameter `UnsecuredDataLength` for being valid. If the check fails, the function shall raise the development error `V2XM_E_PARAM_POINTER` otherwise (if DET is disabled) return `V2X_E_NOT_OK`.]

[SWS_V2xM_00140] [If development error detection is enabled: the function shall check the parameter `UnsecuredDataPtr` for being valid. If the check fails, the function shall raise the development error `V2XM_E_PARAM_POINTER` otherwise (if DET is disabled) return `V2X_E_NOT_OK`.]

[SWS_V2xM_00183] [If development error detection is enabled: the function shall check the parameter `SecReport` for being valid. If the check fails, the function shall raise the development error `V2XM_E_PARAM_POINTER` otherwise (if DET is disabled) return `V2X_E_NOT_OK`.]

[SWS_V2xM_00184] [If development error detection is enabled: the function shall check the parameter `CertificateId` for being valid. If the check fails, the function shall raise the development error `V2XM_E_PARAM_POINTER` otherwise (if DET is disabled) return `V2X_E_NOT_OK`.]

[SWS_V2xM_00185] [If development error detection is enabled: the function shall check the parameter `ItsAid` for being valid. If the check fails, the function shall raise the development error `V2XM_E_PARAM_POINTER` otherwise (if DET is disabled) return `V2X_E_NOT_OK`.]

[SWS_V2xM_00186] [If development error detection is enabled: the function shall check the parameter `SspLength` for being valid. If the check fails, the function shall raise the development error `V2XM_E_PARAM_POINTER` otherwise (if DET is disabled) return `V2X_E_NOT_OK`.]

[SWS_V2xM_00187] [If development error detection is enabled: the function shall check the parameter `SspBits` for being valid. If the check fails, the function shall raise the development error `V2XM_E_PARAM_POINTER` otherwise (if DET is disabled) return `V2X_E_NOT_OK`.]

8.3.7 V2xM_TriggerPseudonymChange

[SWS_V2xM_00077] Definition of API function V2xM_TriggerPseudonymChange

[

Service Name	V2xM_TriggerPseudonymChange	
Syntax	Std_ReturnType V2xM_TriggerPseudonymChange (void)	
Service ID [hex]	0x08	
Sync/Async	Synchronous	
Reentrancy	Non Reentrant	
Parameters (in)	None	
Parameters (inout)	None	
Parameters (out)	None	
Return value	Std_ReturnType	E_OK: request successful E_NOT_OK: request failed
Description	This function is called by the V2xFac, V2xGn or another entity to change the Pseudonym used by the V2X-Stack, e.g. due to a GeoNetworking address conflict.	
Available via	V2xM.h	

]

[SWS_V2xM_00142] [The function `V2xM_TriggerPseudonymChange()` shall trigger the pseudonym change and update the identity of the V2X-Stack to the adjacent modules.]

[SWS_V2xM_00143] [If development error detection is enabled: the function shall check that the service `V2xM_Init()` was previously called. If the check fails, the function shall raise the development error `V2XM_E_UNINIT`.]

[SWS_V2xM_00144] [If the pseudonym change is locked `V2X_E_NOT_OK` shall be returned.]

8.3.8 V2xM_LockPseudonymChange

[SWS_V2xM_00078] Definition of API function V2xM_LockPseudonymChange [

Service Name	V2xM_LockPseudonymChange	
Syntax	Std_ReturnType V2xM_LockPseudonymChange (uint16 Duration, uint64* HandleId)	

▽



Service ID [hex]	0x09	
Sync/Async	Synchronous	
Reentrancy	Reentrant	
Parameters (in)	Duration	Number of seconds to lock
Parameters (inout)	None	
Parameters (out)	HandleId	Handle to unlock manually
Return value	Std_ReturnType	E_OK: request successful E_NOT_OK: request failed
Description	This function is called by V2xGn or from the Application Service Interface to lock the pseudonym change.	
Available via	V2xM.h	

]

[SWS_V2xM_00145] [The function `V2xM_LockPseudonymChange()` shall prevent the module from changing the pseudonym. The requirements from [23] shall apply.]

[SWS_V2xM_00146] [If development error detection is enabled: the function shall check that the service `V2xM_Init()` was previously called. If the check fails, the function shall raise the development error `V2XM_E_UNINIT.`]

[SWS_V2xM_00147] [If development error detection is enabled: the function shall check the parameter `HandleId` for being valid. If the check fails, the function shall raise the development error `V2XM_E_PARAM_POINTER.`]

8.3.9 V2xM_UnlockPseudonymChange

[SWS_V2xM_00079] Definition of API function `V2xM_UnlockPseudonymChange`

[

Service Name	V2xM_UnlockPseudonymChange	
Syntax	Std_ReturnType V2xM_UnlockPseudonymChange (uint64 HandleId)	
Service ID [hex]	0x0a	
Sync/Async	Synchronous	
Reentrancy	Reentrant	
Parameters (in)	HandleId	Handle to unlock manually, available from LockPseudonym Change function.
Parameters (inout)	None	
Parameters (out)	None	
Return value	Std_ReturnType	E_OK: request successful E_NOT_OK: request failed



△

Description	This function is called by V2xGn or from the Application Service Interface to unlock the pseudonym change.
Available via	V2xM.h

]

[SWS_V2xM_00149] [The function `V2xM_UnlockPseudonymChange()` shall allow the module to change the pseudonym again.]

[SWS_V2xM_00150] [If development error detection is enabled: the function shall check that the service `V2xM_Init()` was previously called. If the check fails, the function shall raise the development error `V2XM_E_UNINIT.`]

[SWS_V2xM_00151] [If development error detection is enabled: the function shall check the parameter `HandleId` for being valid. If the check fails, the function shall raise the development error `V2XM_E_PARAM.`]

8.3.10 V2xM_V2xGn_SetGlobalRxParams

[SWS_V2xM_00080] **Definition of API function `V2xM_V2xGn_SetGlobalRxParams`** [

Service Name	V2xM_V2xGn_SetGlobalRxParams	
Syntax	<pre>void V2xM_V2xGn_SetGlobalRxParams (const uint16* Cbr_Gs, const V2x_ChanType* Channel)</pre>	
Service ID [hex]	0x0b	
Sync/Async	Synchronous	
Reentrancy	Non Reentrant	
Parameters (in)	Cbr_Gs	List of current channel busy values
	Channel	List of channel types to that the busy values belong to
Parameters (inout)	None	
Parameters (out)	None	
Return value	None	
Description	This function is called by V2xGn to set the current channel busy percentage for the specified channel	
Available via	V2xM_V2xGn.h	

]

[SWS_V2xM_00154] [If development error detection is enabled: the function shall check that the service `V2xM_Init()` was previously called. If the check fails, the function shall raise the development error `V2XM_E_UNINIT.`]

[SWS_V2xM_00155] [If development error detection is enabled: the function shall check the parameter `Cbr_Gs` for being valid. If the check fails, the function shall raise the development error `V2XM_E_PARAM_POINTER`.]

[SWS_V2xM_00156] [If development error detection is enabled: the function shall check the parameter `Channel` for being valid. If the check fails, the function shall raise the development error `V2XM_E_PARAM_POINTER`.]

8.3.11 V2xM_V2xGn_GetGlobalTxParams

[SWS_V2xM_00081] Definition of API function V2xM_V2xGn_GetGlobalTxParams [

Service Name	V2xM_V2xGn_GetGlobalTxParams	
Syntax	<pre>void V2xM_V2xGn_GetGlobalTxParams (const V2x_ChanType* channel, uint16* Cbr)</pre>	
Service ID [hex]	0x0c	
Sync/Async	Synchronous	
Reentrancy	Non Reentrant	
Parameters (in)	channel	List of channels
Parameters (inout)	None	
Parameters (out)	Cbr	List of current channel busy values (in tenths of a percent) for the specified channel type
Return value	None	
Description	This function is called by V2xGn to get the current channel busy percentage for the specified channel	
Available via	V2xM_V2xGn.h	

]

[SWS_V2xM_00158] [The function `V2xM_V2xGn_GetGlobalTxParams()` shall change provide a list with CBR values for the specific list of channels.]

[SWS_V2xM_00159] [If development error detection is enabled: the function shall check that the service `V2xM_Init()` was previously called. If the check fails, the function shall raise the development error `V2XM_E_UNINIT`.]

[SWS_V2xM_00160] [If development error detection is enabled: the function shall check the parameter `Cbr` for being valid. If the check fails, the function shall raise the development error `V2XM_E_PARAM_POINTER`.]

[SWS_V2xM_00161] [If development error detection is enabled: the function shall check the parameter `channel` for being valid. If the check fails, the function shall raise the development error `V2XM_E_PARAM_POINTER`.]

8.3.12 V2xM_CalcDistance

[SWS_V2xM_00176] Definition of API function V2xM_CalcDistance

Upstream requirements: [SRS_V2X_00280](#)

[

Service Name	V2xM_CalcDistance	
Syntax	<pre>Std_ReturnType V2xM_CalcDistance (sint32 LatitudeA, sint32 LongitudeA, sint32 LatitudeB, sint32 LongitudeB, float32* Distance)</pre>	
Service ID [hex]	0x0e	
Sync/Async	Synchronous	
Reentrancy	Reentrant	
Parameters (in)	LatitudeA	Latitude of geographical point A
	LongitudeA	Longitude of geographical point A
	LatitudeB	Latitude of geographical point B
	LongitudeB	Longitude of geographical point B
Parameters (inout)	None	
Parameters (out)	Distance	Distance between geographical points A and B [m]
Return value	Std_ReturnType	E_OK: Calculation ok E_NOT_OK: Calculation failed, input parameters out of range
Description	Calculates the distance between two geographical points on earth with the assumption that they are on elevation 0.	
Available via	V2xM.h	

]

[SWS_V2xM_00181] [If development error detection is enabled: the function shall check the parameter `Distance` for being valid. If the check fails, the function shall raise the development error `V2XM_E_PARAM_POINTER`.]

8.3.13 V2xM_CalcHeadingInTolerance

[SWS_V2xM_00178] Definition of API function V2xM_CalcHeadingInTolerance [

Service Name	V2xM_CalcHeadingInTolerance	
Syntax	<pre>boolean V2xM_CalcHeadingInTolerance (float32 Heading1, float32 Heading2, float32 Tolerance)</pre>	
Service ID [hex]	0x0f	
Sync/Async	Synchronous	
Reentrancy	Reentrant	
Parameters (in)	Heading1	First heading value
	Heading2	Second heading value
	Tolerance	Allowed tolerance between heading values
Parameters (inout)	None	
Parameters (out)	None	
Return value	boolean	TRUE: diff of headings is within tolerance FALSE: diff of headings is outside tolerance
Description	Calculates if difference of heading values are within a tolerance value	
Available via	V2xM.h	

]

8.3.14 V2xM_SetTollingZoneInformation

[SWS_V2xM_00182] Definition of API function V2xM_SetTollingZoneInformation [

[

Service Name	V2xM_SetTollingZoneInformation	
Syntax	<pre>void V2xM_SetTollingZoneInformation (sint32 protectedZoneLatitude, sint32 protectedZoneLongitude, uint32 protectedZoneRadius, uint8 protectedZoneID)</pre>	
Service ID [hex]	0x10	
Sync/Async	Synchronous	
Reentrancy	Reentrant	
Parameters (in)	protectedZoneLatitude	Latitude of the tolling zone
	protectedZoneLongitude	Longitude of the tolling zone
	protectedZoneRadius	radius of the protected zone in meter, use default value of 55m if not known
	protectedZoneID	ID of the tolling zone, use 0xFFFFFFFF if not known
Parameters (inout)	None	

▽



Parameters (out)	None
Return value	None
Description	Set available tolling zone information. This is done from V2xFac that receives this information via CAM messages.
Available via	V2xM.h

]

[SWS_V2xM_00190] [The V2xM Module shall check the provided positional information. In case of a distance less than given in `protectedZoneRadius`, tolling zone power reduction shall be enabled.]

[SWS_V2xM_00170] [Used for handling of tolling zone power reduction.

If the distance to a Tolling Zone position given by `V2xM_SetTollingZoneInformation` is less than the distance given in `protectedZoneRadius`, the module shall push that to the WEthTrcv via the API `EthIf_SetRadioParams` so that WEthTrcv is able to reduce output power of specific packets. If the position drops out of the range, tolling zone power reduction shall be switched off.]

[SWS_V2xM_20460] [The V2X Management module shall implement a protected zone center position list. The minimum is to build in the official list provided by the ASECAP (not supposed to be updated except by a firmware update).

Protected Zones with identical `protectedZone` ID may be seen as a single station. In case the ASECAP database and the CEN-DSRC mitigation CAMs contains a valid protection zone with the identical `protectedZone` ID mitigation shall be done only based on the CEN-DSRC mitigation CAM content.]

8.3.15 V2xM_Vdp_GetNextLongTermCertificateExpirationDate

[SWS_V2xM_91001] Definition of API function `V2xM_Vdp_GetNextLongTermCertificateExpirationDate` [

Service Name	<code>V2xM_Vdp_GetNextLongTermCertificateExpirationDate</code>
Syntax	<code>Std_ReturnType V2xM_Vdp_GetNextLongTermCertificateExpirationDate (uint32* ExpirationDate)</code>
Service ID [hex]	0x12
Sync/Async	Synchronous
Reentrancy	Reentrant
Parameters (in)	None





Parameters (inout)	None	
Parameters (out)	ExpirationDate	Date is based on format Time32 that is specified in IEEE 1609.2 as mentioned in [19].
Return value	Std_ReturnType	E_OK: Provided value is valid. E_NOT_OK: Operation failed, provided value is not reliable.
Description	Service to get the certificate expiration date of the long term certificate that expires in the nearest future.	
Available via	V2xM.h	

]

[SWS_V2xM_00202] [The function `V2xM_Vdp_GetNextLongTermCertificateExpirationDate` shall check for the currently used long-term certificate (aka. Enrollment Credentials (EC)). If none was found, the function shall return E_NOT_OK. If a long-term certificate is in use, the expiration date of this certificate shall be provided through the parameter `ExpirationDate` and the function shall return E_OK.]

8.3.16 V2xM_Vdp_GetNextPseudonymCertificateExpirationDate

[SWS_V2xM_91002] Definition of API function `V2xM_Vdp_GetNextPseudonymCertificateExpirationDate` [

Service Name	V2xM_Vdp_GetNextPseudonymCertificateExpirationDate	
Syntax	Std_ReturnType V2xM_Vdp_GetNextPseudonymCertificateExpirationDate (uint32* expirationDate)	
Service ID [hex]	0x13	
Sync/Async	Synchronous	
Reentrancy	Reentrant	
Parameters (in)	None	
Parameters (inout)	None	
Parameters (out)	expirationDate	Date is based on format Time32 that is specified in IEEE 1609.2 as mentioned in [19].
Return value	Std_ReturnType	E_OK: Provided value is valid. E_NOT_OK: Operation failed, provided value is not reliable.
Description	Service to get the certificate expiration date of the pseudonym certificate that expires in the nearest future.	
Available via	V2xM.h	

]

[SWS_V2xM_00203] [The function `V2xM_Vdp_GetNextPseudonymCertificateExpirationDate` shall check for the currently used pseudonym certificate (aka. Authorization Tickets (AT)). If none was found, the function shall return E_NOT_OK. If a pseudonym certificate is in use, the expiration date of this certificate shall be provided through the parameter `expirationDate` and the function shall return E_OK.]

8.3.17 V2xM_Vdp_SetPositionAndTime

[SWS_V2xM_91003] Definition of API function V2xM_Vdp_SetPositionAndTime [

Service Name	V2xM_Vdp_SetPositionAndTime	
Syntax	Std_ReturnType V2xM_Vdp_SetPositionAndTime (V2xM_PositionAndTimeType PositionAndTime)	
Service ID [hex]	0x14	
Sync/Async	Synchronous	
Reentrancy	Reentrant	
Parameters (in)	PositionAndTime	Current position and time.
Parameters (inout)	None	
Parameters (out)	None	
Return value	Std_ReturnType	E_OK: Position and time successfully set. E_NOT_OK: Failed to set position and time.
Description	Service for setting positional and time information relevant for the V2X-Stack	
Available via	V2xM.h	

]

[SWS_V2xM_00204] [The current position and time of the vehicle shall be set through the function [V2xM_Vdp_SetPositionAndTime](#). If the values are accepted by the function, E_OK shall be returned, otherwise the value E_NOT_OK shall be returned.]

8.3.18 V2xM_GetTime

[SWS_V2xM_91004] Definition of API function V2xM_GetTime [

Service Name	V2xM_GetTime	
Syntax	Std_ReturnType V2xM_GetTime (uint32* CurrentItsTime)	
Service ID [hex]	0x15	
Sync/Async	Synchronous	
Reentrancy	Non Reentrant	
Parameters (in)	None	
Parameters (inout)	None	
Parameters (out)	CurrentItsTime	Current ITS Time in ms as estimated by the V2X stack (Number of milliseconds since 2004-01-01T00:00:00.000Z, as specified in ISO 8601, which means that the leap seconds are inserted).
Return value	Std_ReturnType	E_OK: Time successfully retrieved. E_NOT_OK: Failed to get time.
Description	Service for getting the ITS time as estimated by the V2X-Stack	
Available via	V2xM.h	

]

[SWS_V2xM_00205] [The current ITS time of the vehicle shall be retrieved through the function `V2xM_GetTime`. If ITS time was successfully retrieved by the function, `E_OK` shall be returned, otherwise the value `E_NOT_OK` shall be returned.]

8.4 Callback notifications

8.4.1 CSM callback interfaces

[SWS_V2xM_00163]

Upstream requirements: [SRS_BSW_00457](#)

[If the V2xM module uses the Csm module asynchronously to calculate or verify the signatures, V2xM shall provide callback functions according to `Csm_CallbackType`.]

8.5 Scheduled functions

8.5.1 V2xM_MainFunction

[SWS_V2xM_00164] Definition of scheduled function V2xM_MainFunction [

Service Name	V2xM_MainFunction
Syntax	<code>void V2xM_MainFunction (</code> <code>void</code> <code>)</code>
Service ID [hex]	0x0D
Description	Scheduled MainFunction of V2xM
Available via	SchM_V2xM.h

]

[SWS_V2xM_00165] [Used for polling DCC information via `Ethlf_GetChanRxParamsAPI()` call from Wireless Ethernet Transceiver Driver.]

[SWS_V2xM_00166] [Used for cyclic pseudonym change.]

[SWS_V2xM_00167] [Used for pushing DCC information to adjacent V2X modules.]

[SWS_V2xM_00168] [Used for polling state of asynchronous security functions of CSM.]

[SWS_V2xM_00169] [Used for automatic unlocking of pseudonym changes if locking interval is due.]

8.6 Expected interfaces

In this chapter all interfaces required from other modules are listed.

8.6.1 Mandatory interfaces

This chapter defines all external interfaces which are required to fulfill the core functionality of the module.

[SWS_V2xM_00092] Definition of mandatory interfaces required by module V2xM [

<i>API Function</i>	<i>Header File</i>	<i>Description</i>
Csm_Hash	Csm.h	Uses the given data to perform the hash calculation and stores the hash.
Csm_KeyElementGet	Csm.h	Retrieves the key element bytes from a specific key element of the key identified by the keyld and stores the key element in the memory location pointed by the key pointer.
Csm_KeyElementSet	Csm.h	Sets the given key element bytes to the key identified by keyld.
Csm_RandomGenerate	Csm.h	Generate a random number and stores it in the memory location pointed by the result pointer.
Csm_SignatureGenerate	Csm.h	Uses the given data to perform the signature calculation and stores the signature in the memory location pointed by the result pointer.
Csm_SignatureVerify	Csm.h	Verifies the given signature by checking if it was generated with the given data.
Ethlf_GetChanRxParams	Ethlf.h	Read values related to the receive direction of the transceiver. For example, this could be a Channel Busy Ratio (CBR) or the average Channel Idle Time (CIT).
Ethlf_SetChanRxParams	Ethlf.h	Set values related to the receive direction of a transceiver's wireless channel. For example, this could be a channel parameter like the frequency.
Ethlf_SetChanTxParams	Ethlf.h	Set values related to the transmit direction of a transceiver's wireless channel. For example, this could be the bitrate of a channel.
Ethlf_SetPhysAddr	Ethlf.h	Sets the physical source address used by the indexed controller.
Ethlf_SetRadioParams	Ethlf.h	Set values related to a transceiver's wireless radio. For example, this could be the selection of the radio settings (channel, ...).
NvM_GetErrorStatus	NvM.h	Service to read the block dependent error/status information.





API Function	Header File	Description
NvM_ReadBlock	NvM.h	Service to copy the data of the NV block to its corresponding RAM block.
NvM_WriteBlock	NvM.h	Service to copy the data of the RAM block to its corresponding NV block.
V2xFac_V2xM_AbortPseudonym Change	V2xFac_V2xM.h	This function is called by the V2xM when not all modules are OK with the pseudonym change and the change is to be rolled back.
V2xFac_V2xM_CommitPseudonym Change	V2xFac_V2xM.h	This function is called by the V2xM when all modules are OK with the pseudonym change and the change is to be committed.
V2xFac_V2xM_PreparePseudonym Change	V2xFac_V2xM.h	By this API primitive the V2xFac module gets an indication that the given Pseudonym and hereby the StationId is about to be changed
V2xFac_V2xM_SetCaBsOperation	V2xFac_V2xM.h	By this API primitive the V2xFac module gets an indication of the current operation state of the CA Basic Service.
V2xFac_V2xM_SetTGenCamDcc	V2xFac_V2xM.h	By this API primitive the V2xFac module gets an indication of the current TGenCamDcc value.
V2xGn_V2xM_AbortPseudonym Change	V2xGn_V2xM.h	This function is called by the V2xM when not all modules are OK with the pseudonym change and the change is to be rolled back.
V2xGn_V2xM_CommitPseudonym Change	V2xGn_V2xM.h	This function is called by the V2xM when all modules are OK with the pseudonym change and the change is to be committed.
V2xGn_V2xM_DecapConfirmation	V2xGn_V2xM.h	This function is called by the V2xM when a decapsulation has been finished.
V2xGn_V2xM_EncapConfirmation	V2xGn_V2xM.h	This function is called by the V2xM when an encapsulation has been finished.
V2xGn_V2xM_PreparePseudonym Change	V2xGn_V2xM.h	This function is called by the V2xM when a Pseudonym Change occurs to prepare the change in every module using it.

]

8.6.2 Optional interfaces

This chapter defines all external interfaces which are required to fulfill an optional functionality of the module.

[SWS_V2xM_00093] Definition of optional interfaces requested by module V2xM

[

API Function	Header File	Description
Det_ReportError	Det.h	Service to report development errors.
Efx_ArcCos_s32_u32	Efx.h	This service computes the inverse cosine of a value.
Efx_ArcSin_s32_s32	Efx.h	This service computes the inverse sine of a value.
Efx_Cos_s32_s32	Efx.h	This service computes the cosine of an angle.





API Function	Header File	Description
Efx_Sin_s32_s32	Efx.h	This service computes the sine of an angle.
Efx_Sqrt_u32_u32	Efx.h	This service computes the square root of a value
Gpt_GetPredefTimerValue	Gpt.h	Delivers the current value of the desired GPT Predef Timer.
Gpt_StartTimer	Gpt.h	Starts a timer channel.
Mfl_ArcCos_f32	Mfl.h	Returns the arc cosine of an angle, in the range of 0.0 through pi.
Mfl_ArcSin_f32	Mfl.h	Returns the arc sine of an angle, in the range of -pi/2 through pi/2.
Mfl_Cos_f32	Mfl.h	Calculates the cosine of the argument.
Mfl_Sin_f32	Mfl.h	Calculates the sine of the argument.
Mfl_Sqrt_f32	Mfl.h	Returns the square root of the operand (ValSqrt), determined according to the following equation
StbM_GetCurrentTime	StbM.h	Returns a time tuple (Local time, Global time and Timebase status) and user data details Note: This API shall be called with locked interrupts / within an Exclusive Area to prevent interruption (i.e., the risk that the time stamp is outdated on return of the function call).

]

8.7 Service Interfaces

8.7.1 Client-Server-Interfaces

8.7.1.1 V2xM_Vdp

[SWS_V2xM_00095] Definition of ClientServerInterface V2xM_Vdp

Upstream requirements: [SRS_V2X_00412](#), [SRS_V2X_00413](#), [SRS_V2X_00190](#)

[

Name	V2xM_Vdp		
Comment	Interfaces for Vehicle Data Provider (VDP) to get and set V2X related vehicle information in the BSW V2X-Stack		
IsService	true		
Variation	-		
Possible Errors	0	E_OK	Operation successful
	1	E_NOT_OK	Operation failed

Operation	GetNextLongTermCertificateExpirationDate
Comment	Service to get the certificate expiration date of the long term certificates that expires in the nearest future.
Mapped to API	V2xM_Vdp_GetNextLongTermCertificateExpirationDate





Variation	–	
Parameters	ExpirationDate	
	Type	uint32
	Direction	OUT
	Comment	Date is based on format Time32 that is specified in IEEE 1609.2 as mentioned in [19].
	Variation	–
Possible Errors	E_OK E_NOT_OK	

Operation	GetNextPseudonymCertificateExpirationDate	
Comment	Service to get the certificate expiration date of the pseudonym certificates that expires in the nearest future.	
Mapped to API	V2xM_Vdp_GetNextPseudonymCertificateExpirationDate	
Variation	–	
Parameters	ExpirationDate	
	Type	uint32
	Direction	OUT
	Comment	Date is based on format Time32 that is specified in IEEE 1609.2 as mentioned in [19]
	Variation	–
Possible Errors	E_OK E_NOT_OK	

Operation	GetTime32	
Comment	Service to get the current reference time.	
Mapped to API	V2xM_GetTime	
Variation	–	
Parameters	Time32	
	Type	uint32
	Direction	OUT
	Comment	Time is based on TAI mod 2 ³² , where TAI is the number of elapsed TAI milliseconds since 2004-01-01 00:00:00.000.
	Variation	–
Possible Errors	E_OK E_NOT_OK	

Operation	SetPositionAndTime	
Comment	Service for setting positional and time information relevant for the V2X-Stack	
Mapped to API	V2xM_Vdp_SetPositionAndTime	
Variation	–	
Parameters	positionAndTime	
	Type	V2xM_PositionAndTimeType
	Direction	IN
	Comment	–
	Variation	–
Possible Errors	E_OK E_NOT_OK	

]

8.7.1.2 V2xM_PseudonymChange

[SWS_V2xM_00172] Definition of ClientServerInterface V2xM_PseudonymChange [

Name	V2xM_PseudonymChange		
Comment	Interfaces for Applications to lock and unlock pseudonym changes within the V2X-BSW-Stack.		
IsService	true		
Variation	–		
Possible Errors	0	E_OK	Operation successful
	1	E_NOT_OK	Operation failed

Operation	Lock		
Comment	Service for locking the pseudonym change. See [SWS_V2xM_00078] for more information about locking the pseudonym change.		
Mapped to API	V2xM_LockPseudonymChange		
Variation	–		
Parameters	Duration		
	Type	uint16	
	Direction	IN	
	Comment	Duration to lock.	
	Variation	–	
	Handleld		
	Type	uint64	
	Direction	OUT	
Possible Errors	E_OK		
	E_NOT_OK		

Operation	Unlock		
Comment	Service for unlocking the pseudonym change. See [SWS_V2xM_00079] for more information about locking the pseudonym change.		
Mapped to API	V2xM_UnlockPseudonymChange		
Variation	–		
Parameters	Handleld		
	Type	uint64	
	Direction	IN	
	Comment	Handleld to unlock	
	Variation	–	
Possible Errors	E_OK		
	E_NOT_OK		

]

8.7.1.3 V2xM_GeoMath

[SWS_V2xM_00180] Definition of ClientServerInterface V2xM_GeoMath [

Name	V2xM_GeoMath		
Comment	Interfaces for Applications to math functions		
IsService	true		
Variation	–		
Possible Errors	0	E_OK	Operation successful
	1	E_NOT_OK	Operation failed

Operation	Distance		
Comment	Service for Calculating the distance between two geographical points		
Mapped to API	V2xM_CalcDistance		
Variation	–		
Parameters	latitudeA		
	Type	sint32	
	Direction	IN	
	Comment	Latitude of geographical point A	
	Variation	–	
	longitudeA		
	Type	sint32	
	Direction	IN	
	Comment	Longitude of geographical point A	
	Variation	–	
	latitudeB		
	Type	sint32	
	Direction	IN	
	Comment	Latitude of geographical point B	
	Variation	–	
	longitudeB		
Type	sint32		
Direction	IN		
Comment	Longitude of geographical point B		
Variation	–		
distance			
Type	float32		
Direction	OUT		
Comment	Distance between geographical points A and B in [m].		
Variation	–		
Possible Errors	E_OK E_NOT_OK		

Operation	HeadingInTolerance		
Comment	Service for Calculating if difference of heading values are within a tolerance value		
Mapped to API	V2xM_CalcHeadingInTolerance		





Variation	–	
Parameters	heading1	
	Type	float32
	Direction	IN
	Comment	First heading value
	Variation	–
	heading2	
	Type	float32
	Direction	IN
	Comment	Next heading value
	Variation	–
	toleranceValue	
	Type	float32
	Direction	IN
	Comment	Tolerated difference between heading1 and heading2
Variation	–	
Possible Errors	tolerated	
	Type	boolean
	Direction	OUT
	Comment	Return value
	Variation	–
E_OK E_NOT_OK		

]

8.7.2 Implementation Data Types

8.7.2.1 ImplementationDataType V2xM_PositionAndTimeType

[SWS_V2xM_00047] Definition of ImplementationDataType V2xM_PositionAndTimeType [

Name	V2xM_PositionAndTimeType	
Kind	Structure	
Elements	latitude	
	Type	sint32
	Comment	Latitude [1/10 microdegree]
	longitude	
	Type	sint32
	Comment	Longitude [1/10 microdegree]
altitude		
Type	sint32	





	Comment	Altitude [1/100 m]
	speed	
	Type	sint16
	Comment	Speed [1/100 m/s]
	heading	
	Type	uint16
	Comment	Heading [1/10 degrees]
	timestamp	
	Type	uint32
	Comment	Timestamp [ms]
	semiMajorConfidence	
	Type	uint16
	Comment	From position confidence ellipse
	semiMinorConfidence	
	Type	uint16
	Comment	From position confidence ellipse
	semiMajorOrientation	
	Type	uint16
	Comment	From position confidence ellipse
	pai	
	Type	boolean
	Comment	Positional accuracy indicator
	informationValid	
	Type	boolean
	Comment	Indicates that position information is valid
Description	Position and time related information as defined within [25] chapter 8.2.	
Variation	-	
Available via	Rte_V2xM_Type.h	

]

8.7.3 Ports

8.7.3.1 V2xM_V2xM_GeoMath

[SWS_V2xM_00192] Definition of Port V2xM_GeoMath provided by module V2xM

[

Name	V2xM_GeoMath		
Kind	ProvidedPort	Interface	V2xM_GeoMath
Description	Service port for geographical calculation requests.		





Variation	–
------------------	---

]

8.7.3.2 V2xM_V2xM_PseudonymChange

[SWS_V2xM_00193] Definition of Port V2xM_PseudonymChange provided by module V2xM [

Name	V2xM_PseudonymChange		
Kind	ProvidedPort	Interface	V2xM_PseudonymChange
Description	Service port for pseudonym lock and unlock requests.		
Variation	–		

]

8.7.3.3 V2xM_V2xM_Vdp

[SWS_V2xM_00195] Definition of Port V2xM_Vdp provided by module V2xM [

Name	V2xM_Vdp		
Kind	ProvidedPort	Interface	V2xM_Vdp
Description	Service port for exchange of vehicle related data. This port is used by the Vehicle Data Provider SW-C.		
Variation	–		

]

9 Sequence diagrams

9.1 V2xM_Init - Time initialization

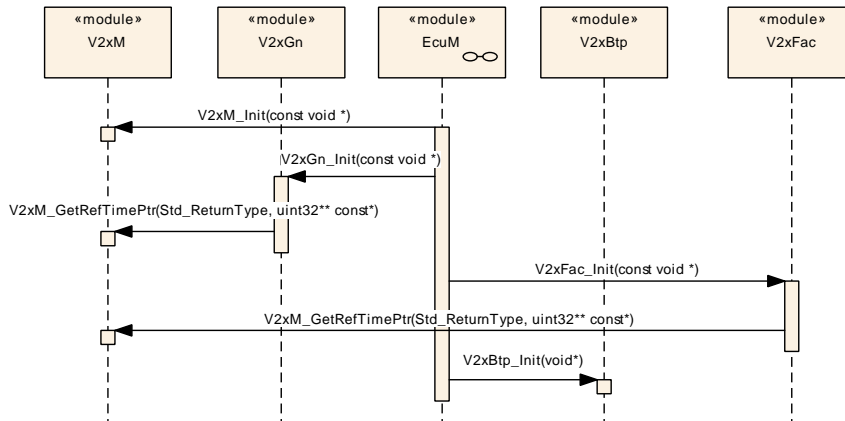


Figure 9.1: V2xM_Init - Time initialization

9.2 Position and time update for V2xGn

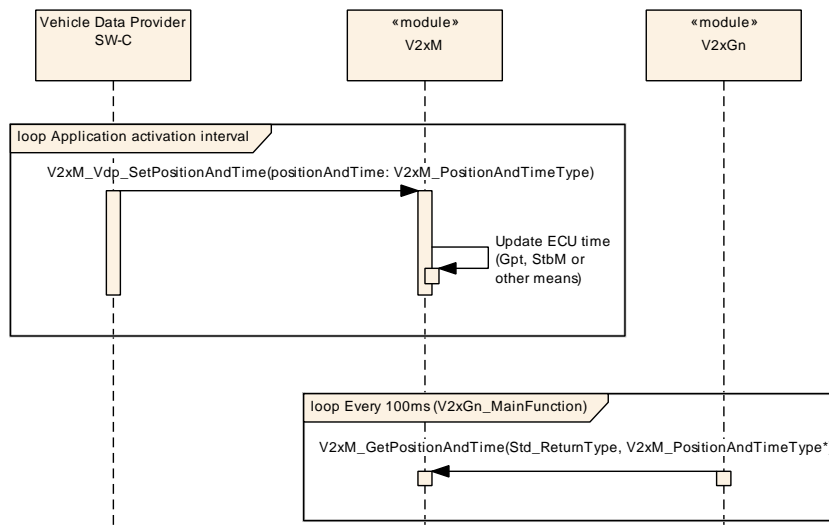


Figure 9.2: Position and time update for V2xGn

9.3 Position and time update for V2xFac

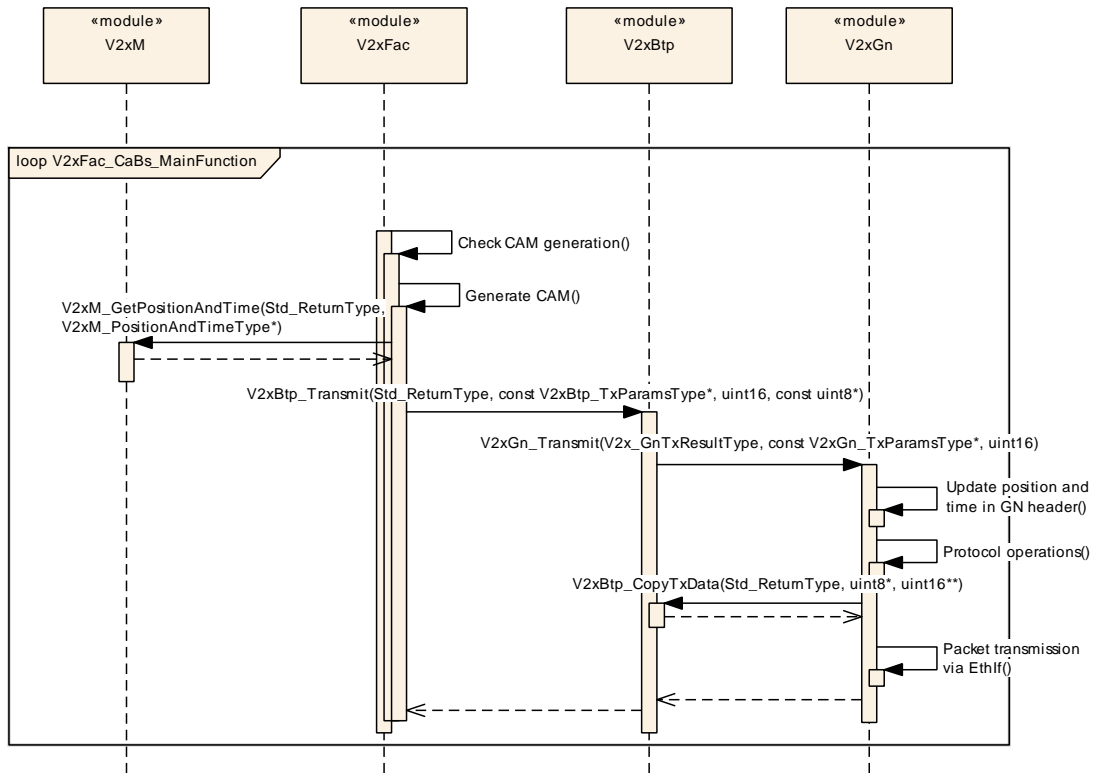


Figure 9.3: Position and time update for V2xFac

9.4 Time handling at reception

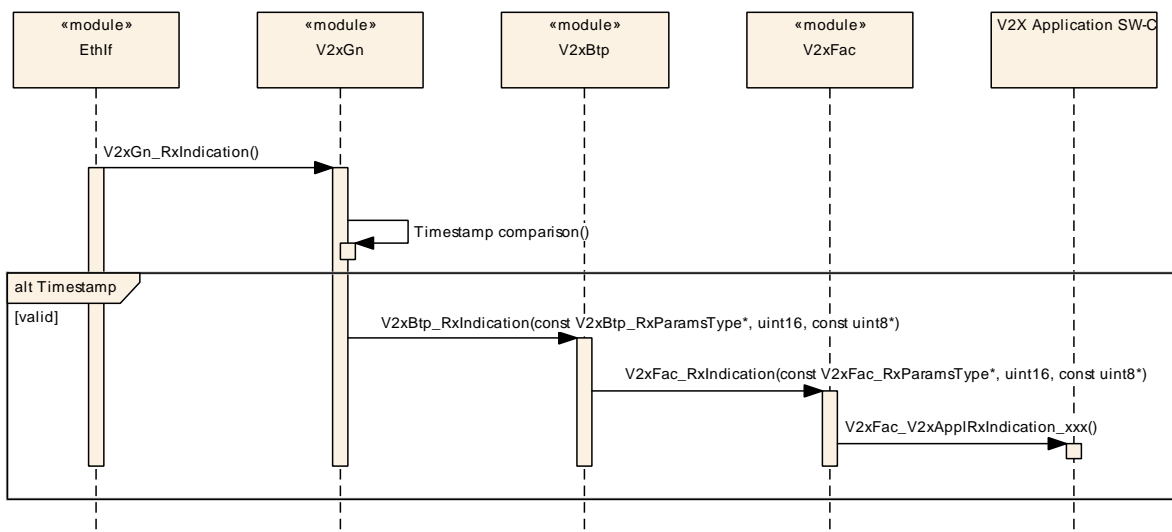


Figure 9.4: Time handling at reception

9.5 Initialization of Wireless Drivers

The Initialization of the Wireless Ethernet Driver and the Wireless Ethernet Transceiver Driver shall be done as depicted in the figure below.

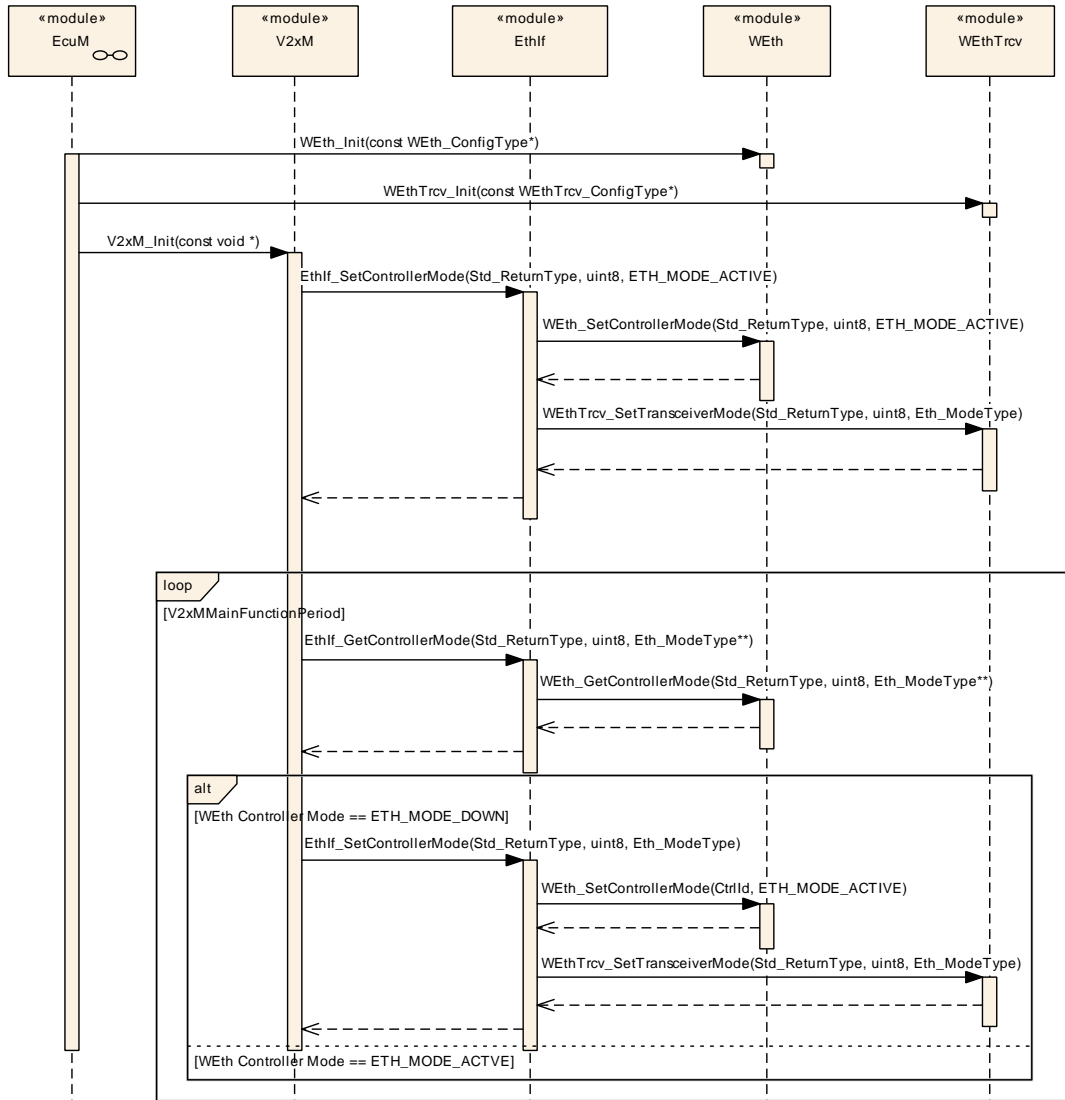


Figure 9.5: WEth and WEthTrcv drivers initialization

10 Configuration specification

In general, this chapter defines configuration parameters and their clustering into containers. In order to support the specification Chapter 10.1 describes fundamentals. It also specifies a template (table) you shall use for the parameter specification. We intend to leave Chapter 10.1 in the specification to guarantee comprehension.

Chapter 10.2 specifies the structure (containers) and the parameters of the module V2xM.

Chapter 10.3 specifies published information of the module V2xM.

10.1 How to read this chapter

For details refer to the chapter 10.1 “Introduction to configuration specification” in [11].

10.2 Containers and configuration parameters

The following chapters summarize all configuration parameters. The detailed meanings of the parameters describe Chapter 7 and Chapter 8.

10.2.1 Variants

[SWS_V2xM_00191]

Upstream requirements: [SRS_BSW_00345](#)

[The V2xM module only supports VARIANT-PRE-COMPILE]

10.2.2 V2xM

[ECUC_V2xM_00016] Definition of EcucModuleDef V2xM [

Module Name	V2xM
Description	Configuration of the V2xM (V2XManagement) module.
Post-Build Variant Support	false
Supported Config Variants	VARIANT-PRE-COMPILE

Included Containers		
Container Name	Multiplicity	Scope / Dependency
V2xMConfig	1	This container contains the configuration parameters and sub containers of the AUTOSAR V2xM module.
V2xMGeneral	1	General configuration of V2xM module.

]

10.2.3 V2xMConfig

[ECUC_V2xM_00001] Definition of EcucParamConfContainerDef V2xMConfig [

Container Name	V2xMConfig
Parent Container	V2xM
Description	This container contains the configuration parameters and sub containers of the AUTOSAR V2xM module.
Configuration Parameters	

No Included Parameters

Included Containers		
Container Name	Multiplicity	Scope / Dependency
V2xMSecurityConfig	1	Configuration of the security services of V2xM.

]

10.2.4 V2xMSecurityConfig

[ECUC_V2xM_00002] Definition of EcucParamConfContainerDef V2xMSecurity Config [

Container Name	V2xMSecurityConfig
Parent Container	V2xMConfig
Description	Configuration of the security services of V2xM.
Configuration Parameters	

Included Parameters		
Parameter Name	Multiplicity	ECUC ID
V2xMSecurityVerificationOnDemand	1	[ECUC_V2xM_00005]
V2xMSecurityNvMBlockDescriptorLongTermCertificates	1	[ECUC_V2xM_00004]
V2xMSecurityNvMBlockDescriptorPseudonymCertificates	1	[ECUC_V2xM_00003]

▽



Included Parameters		
Parameter Name	Multiplicity	ECUC ID
V2xMSignatureGenerationJobRef	1	[ECUC_V2xM_00017]
V2xMSignatureVerifyJobRef	1	[ECUC_V2xM_00018]

No Included Containers

]

[ECUC_V2xM_00005] Definition of EcucBooleanParamDef V2xMSecurityVerificationOnDemand [

Parameter Name	V2xMSecurityVerificationOnDemand		
Parent Container	V2xMSecurityConfig		
Description	Switches the Verification on Demand (VoD) ON or OFF. <ul style="list-style-type: none"> • true: enabled (ON) • false: disabled (OFF) 		
Multiplicity	1		
Type	EcucBooleanParamDef		
Default value	–		
Post-Build Variant Value	false		
Value Configuration Class	Pre-compile time	X	All Variants
	Link time	–	
	Post-build time	–	
Scope / Dependency	scope: local		

]

[ECUC_V2xM_00004] Definition of EcucReferenceDef V2xMSecurityNvMBlockDescriptorLongTermCertificates [

Parameter Name	V2xMSecurityNvMBlockDescriptorLongTermCertificates		
Parent Container	V2xMSecurityConfig		
Description	Reference to NVRAM block containing the none volatile data of long term certificates.		
Multiplicity	1		
Type	Symbolic name reference to NvMBlockDescriptor		
Post-Build Variant Value	false		
Value Configuration Class	Pre-compile time	X	All Variants
	Link time	–	
	Post-build time	–	
Scope / Dependency	scope: local		

]

[ECUC_V2xM_00003] Definition of EcucReferenceDef V2xMSecurityNvMBlockDescriptorPseudonymCertificates [

Parameter Name	V2xMSecurityNvMBlockDescriptorPseudonymCertificates		
Parent Container	V2xMSecurityConfig		
Description	Reference to NVRAM block containing the none volatile data of pseudonym certificates.		
Multiplicity	1		
Type	Symbolic name reference to NvMBlockDescriptor		
Post-Build Variant Value	false		
Value Configuration Class	Pre-compile time	X	All Variants
	Link time	–	
	Post-build time	–	
Scope / Dependency	scope: local		

]

[ECUC_V2xM_00017] Definition of EcucReferenceDef V2xMSignatureGenerationJobRef [

Parameter Name	V2xMSignatureGenerationJobRef		
Parent Container	V2xMSecurityConfig		
Description	Reference to the CSM job to perform signature generation for a V2x message		
Multiplicity	1		
Type	Symbolic name reference to CsmJob		
Post-Build Variant Value	false		
Value Configuration Class	Pre-compile time	X	All Variants
	Link time	–	
	Post-build time	–	
Scope / Dependency	scope: local		

]

[ECUC_V2xM_00018] Definition of EcucReferenceDef V2xMSignatureVerifyJobRef [

Parameter Name	V2xMSignatureVerifyJobRef		
Parent Container	V2xMSecurityConfig		
Description	Reference to the CSM job to perform signature verification for a V2x message		
Multiplicity	1		
Type	Symbolic name reference to CsmJob		
Post-Build Variant Value	false		
Value Configuration Class	Pre-compile time	X	All Variants
	Link time	–	
	Post-build time	–	
Scope / Dependency	scope: local		

]

10.2.5 V2xMGeneral

[ECUC_V2xM_00008] Definition of EcucParamConfContainerDef V2xMGeneral [

Container Name	V2xMGeneral
Parent Container	V2xM
Description	General configuration of V2xM module.
Configuration Parameters	

Included Parameters		
Parameter Name	Multiplicity	ECUC ID
V2xMDevErrorDetect	1	[ECUC_V2xM_00009]
V2xMMainFunctionPeriod	1	[ECUC_V2xM_00015]
V2xMVersionInfoApi	1	[ECUC_V2xM_00010]
V2xMEthIfCtrlRef	1	[ECUC_V2xM_00012]
V2xMGptChannelConfigurationRef	0..1	[ECUC_V2xM_00013]
V2xMNvMBlockDescriptor	1	[ECUC_V2xM_00011]

No Included Containers

]

[ECUC_V2xM_00009] Definition of EcucBooleanParamDef V2xMDevErrorDetect [

[

Parameter Name	V2xMDevErrorDetect		
Parent Container	V2xMGeneral		
Description	Switches the Default Error Tracer (Det) detection and notification ON or OFF. <ul style="list-style-type: none"> • true: enabled (ON) • false: disabled (OFF) 		
Multiplicity	1		
Type	EcucBooleanParamDef		
Default value	false		
Post-Build Variant Value	false		
Value Configuration Class	Pre-compile time	X	All Variants
	Link time	–	
	Post-build time	–	
Scope / Dependency	scope: local		

]

[ECUC_V2xM_00015] Definition of EcucFloatParamDef V2xMMainFunctionPeriod

[

Parameter Name	V2xMMainFunctionPeriod		
Parent Container	V2xMGeneral		
Description	This parameter defines the schedule period of V2xM_MainFunction.Unit: [s]		
Multiplicity	1		
Type	EcucFloatParamDef		
Range]0 .. 0.1[
Default value	0.1		
Post-Build Variant Value	false		
Value Configuration Class	Pre-compile time	X	All Variants
	Link time	–	
	Post-build time	–	
Scope / Dependency	scope: local		

]

[ECUC_V2xM_00010] Definition of EcucBooleanParamDef V2xMVersionInfoApi

[

Parameter Name	V2xMVersionInfoApi		
Parent Container	V2xMGeneral		
Description	Enable/disables the API for reading the version information of the V2xM Module. <ul style="list-style-type: none"> • true: enabled (ON) • false: disabled (OFF) 		
Multiplicity	1		
Type	EcucBooleanParamDef		
Default value	false		
Post-Build Variant Value	false		
Value Configuration Class	Pre-compile time	X	All Variants
	Link time	–	
	Post-build time	–	
Scope / Dependency	scope: local		

]

[ECUC_V2xM_00012] Definition of EcucReferenceDef V2xMEthIfCtrlRef

[

Parameter Name	V2xMEthIfCtrlRef		
Parent Container	V2xMGeneral		
Description	Reference to EthIf controller where the channel and radio parameters should be read and written to.		
Multiplicity	1		
Type	Symbolic name reference to EthIfController		
Post-Build Variant Value	false		
Value Configuration Class	Pre-compile time	X	All Variants
	Link time	–	
	Post-build time	–	

▽



Scope / Dependency	scope: local
---------------------------	--------------

]

[ECUC_V2xM_00013] Definition of EcucReferenceDef V2xMGptChannelConfigurationRef [

Parameter Name	V2xMGptChannelConfigurationRef		
Parent Container	V2xMGeneral		
Description	Reference to General Purpose Timer.		
Multiplicity	0..1		
Type	Symbolic name reference to GptChannelConfiguration		
Post-Build Variant Multiplicity	false		
Post-Build Variant Value	false		
Multiplicity Configuration Class	Pre-compile time	X	All Variants
	Link time	–	
	Post-build time	–	
Value Configuration Class	Pre-compile time	X	All Variants
	Link time	–	
	Post-build time	–	
Scope / Dependency	scope: local		

]

[ECUC_V2xM_00011] Definition of EcucReferenceDef V2xMNvMBlockDescriptor [

Parameter Name	V2xMNvMBlockDescriptor		
Parent Container	V2xMGeneral		
Description	Reference to NVRAM block containing the none volatile data.		
Multiplicity	1		
Type	Symbolic name reference to NvMBlockDescriptor		
Post-Build Variant Value	false		
Value Configuration Class	Pre-compile time	X	All Variants
	Link time	–	
	Post-build time	–	
Scope / Dependency	scope: local		

]

10.3 Published Information

For details refer to the chapter 10.3 “Published Information” in [11].

A History of Specification Items

Please note that the lists in this chapter also include specification items that have been removed from the specification in a later version. These specification items do not appear as hyperlinks in the document.

A.1 Specification Item History of this document compared to AUTOSAR R24-11.

A.1.1 Added Specification Items in R24-11

none

A.1.2 Changed Specification Items in R24-11

Number	Heading
[SWS_V2xM_00033]	Definition of imported datatypes of module V2xM
[SWS_V2xM_00092]	Definition of mandatory interfaces required by module V2xM
[SWS_V2xM_00093]	Definition of optional interfaces requested by module V2xM

Table A.1: Changed Specification Items in R24-11

A.1.3 Deleted Specification Items in R24-11

none

A.2 Specification Item History of this document compared to AUTOSAR R23-11.

A.2.1 Added Specification Items in R23-11

Number	Heading
[SWS_V2xM_00001]	
[SWS_V2xM_00004]	
[SWS_V2xM_00005]	
[SWS_V2xM_00006]	





Number	Heading
[SWS_V2xM_00008]	
[SWS_V2xM_00009]	
[SWS_V2xM_00031]	Definiton of development errors in module V2xM
[SWS_V2xM_00033]	Definition of imported datatypes of module V2xM
[SWS_V2xM_00034]	Definition of datatype V2x_GnPacketTransportType
[SWS_V2xM_00035]	Definition of datatype V2x_GnAddressType
[SWS_V2xM_00036]	Definition of datatype V2x_GnDestinationAreaType
[SWS_V2xM_00038]	Definition of datatype V2x_SecProfileType
[SWS_V2xM_00039]	Definition of datatype V2x_MaximumPacketLifetimeType
[SWS_V2xM_00043]	Definition of datatype V2x_TrafficClassIdType
[SWS_V2xM_00044]	Definition of datatype V2x_ChanType
[SWS_V2xM_00045]	Definition of datatype V2x_GnUpperProtocolType
[SWS_V2xM_00046]	Definition of datatype V2x_GnLongPositionVectorType
[SWS_V2xM_00047]	Definition of ImplementationDataType V2xM_PositionAndTimeType
[SWS_V2xM_00057]	Definition of datatype V2x_PseudonymType
[SWS_V2xM_00070]	Definition of API function V2xM_Init
[SWS_V2xM_00071]	Definition of API function V2xM_GetVersionInfo
[SWS_V2xM_00072]	Definition of API function V2xM_GetPositionAndTime
[SWS_V2xM_00074]	Definition of API function V2xM_V2xGn_ReqEncap
[SWS_V2xM_00075]	Definition of API function V2xM_V2xGn_ReqDecap
[SWS_V2xM_00077]	Definition of API function V2xM_TriggerPseudonymChange
[SWS_V2xM_00078]	Definition of API function V2xM_LockPseudonymChange
[SWS_V2xM_00079]	Definition of API function V2xM_UnlockPseudonymChange
[SWS_V2xM_00080]	Definition of API function V2xM_V2xGn_SetGlobalRxParams
[SWS_V2xM_00081]	Definition of API function V2xM_V2xGn_GetGlobalTxParams
[SWS_V2xM_00092]	Definition of mandatory interfaces in module V2xM
[SWS_V2xM_00093]	Definition of optional interfaces in module V2xM
[SWS_V2xM_00095]	Definition of ClientServerInterface V2xM_Vdp
[SWS_V2xM_00099]	
[SWS_V2xM_00100]	
[SWS_V2xM_00101]	
[SWS_V2xM_00102]	
[SWS_V2xM_00103]	
[SWS_V2xM_00104]	
[SWS_V2xM_00105]	
[SWS_V2xM_00107]	
[SWS_V2xM_00110]	Definition of datatype V2xM_ConfigType
[SWS_V2xM_00112]	Definition of datatype V2x_GnDestinationType
[SWS_V2xM_00113]	Definition of datatype V2x_GnAreaShapeType





Number	Heading
[SWS_V2xM_00114]	Definition of datatype V2x_GnTxResultType
[SWS_V2xM_00115]	Definition of datatype V2x_SecReturnTypes
[SWS_V2xM_00116]	
[SWS_V2xM_00118]	
[SWS_V2xM_00120]	
[SWS_V2xM_00121]	
[SWS_V2xM_00122]	
[SWS_V2xM_00123]	
[SWS_V2xM_00125]	Definition of API function V2xM_GetRefTimePtr
[SWS_V2xM_00126]	
[SWS_V2xM_00127]	
[SWS_V2xM_00128]	
[SWS_V2xM_00130]	
[SWS_V2xM_00131]	
[SWS_V2xM_00132]	
[SWS_V2xM_00133]	
[SWS_V2xM_00134]	
[SWS_V2xM_00135]	
[SWS_V2xM_00136]	
[SWS_V2xM_00137]	
[SWS_V2xM_00138]	
[SWS_V2xM_00139]	
[SWS_V2xM_00140]	
[SWS_V2xM_00142]	
[SWS_V2xM_00143]	
[SWS_V2xM_00144]	
[SWS_V2xM_00145]	
[SWS_V2xM_00146]	
[SWS_V2xM_00147]	
[SWS_V2xM_00149]	
[SWS_V2xM_00150]	
[SWS_V2xM_00151]	
[SWS_V2xM_00154]	
[SWS_V2xM_00155]	
[SWS_V2xM_00156]	
[SWS_V2xM_00158]	
[SWS_V2xM_00159]	
[SWS_V2xM_00160]	
[SWS_V2xM_00161]	





Number	Heading
[SWS_V2xM_00163]	
[SWS_V2xM_00164]	Definition of scheduled function V2xM_MainFunction
[SWS_V2xM_00165]	
[SWS_V2xM_00166]	
[SWS_V2xM_00167]	
[SWS_V2xM_00168]	
[SWS_V2xM_00169]	
[SWS_V2xM_00170]	
[SWS_V2xM_00172]	Definition of ClientServerInterface V2xM_PseudonymChange
[SWS_V2xM_00174]	Definition of datatype V2x_SecReportType
[SWS_V2xM_00175]	
[SWS_V2xM_00176]	Definition of API function V2xM_CalcDistance
[SWS_V2xM_00177]	
[SWS_V2xM_00178]	Definition of API function V2xM_CalcHeadingInTolerance
[SWS_V2xM_00179]	
[SWS_V2xM_00180]	Definition of ClientServerInterface V2xM_GeoMath
[SWS_V2xM_00181]	
[SWS_V2xM_00182]	Definition of API function V2xM_SetTollingZoneInformation
[SWS_V2xM_00183]	
[SWS_V2xM_00184]	
[SWS_V2xM_00185]	
[SWS_V2xM_00186]	
[SWS_V2xM_00187]	
[SWS_V2xM_00188]	
[SWS_V2xM_00189]	
[SWS_V2xM_00190]	
[SWS_V2xM_00191]	
[SWS_V2xM_00192]	Definition of Port V2xM_GeoMath provided by module V2xM
[SWS_V2xM_00193]	Definition of Port V2xM_PseudonymChange provided by module V2xM
[SWS_V2xM_00195]	Definition of Port V2xM_Vdp provided by module V2xM
[SWS_V2xM_00196]	
[SWS_V2xM_00197]	
[SWS_V2xM_00198]	
[SWS_V2xM_00199]	
[SWS_V2xM_00200]	
[SWS_V2xM_00201]	
[SWS_V2xM_00202]	
[SWS_V2xM_00203]	
[SWS_V2xM_00204]	



△

Number	Heading
[SWS_V2xM_00205]	
[SWS_V2xM_20170]	
[SWS_V2xM_20177]	
[SWS_V2xM_20179]	
[SWS_V2xM_20180]	
[SWS_V2xM_20182]	
[SWS_V2xM_20183]	
[SWS_V2xM_20191]	
[SWS_V2xM_20192]	
[SWS_V2xM_20238]	
[SWS_V2xM_20240]	
[SWS_V2xM_20293]	
[SWS_V2xM_20402]	
[SWS_V2xM_20409]	
[SWS_V2xM_20411]	
[SWS_V2xM_20460]	
[SWS_V2xM_91001]	Definition of API function V2xM_Vdp_GetNextLongTermCertificateExpirationDate
[SWS_V2xM_91002]	Definition of API function V2xM_Vdp_GetNextPseudonymCertificateExpirationDate
[SWS_V2xM_91003]	Definition of API function V2xM_Vdp_SetPositionAndTime
[SWS_V2xM_91004]	Definition of API function V2xM_GetTime

Table A.2: Added Specification Items in R23-11

A.2.2 Changed Specification Items in R23-11

none

A.2.3 Deleted Specification Items in R23-11

none